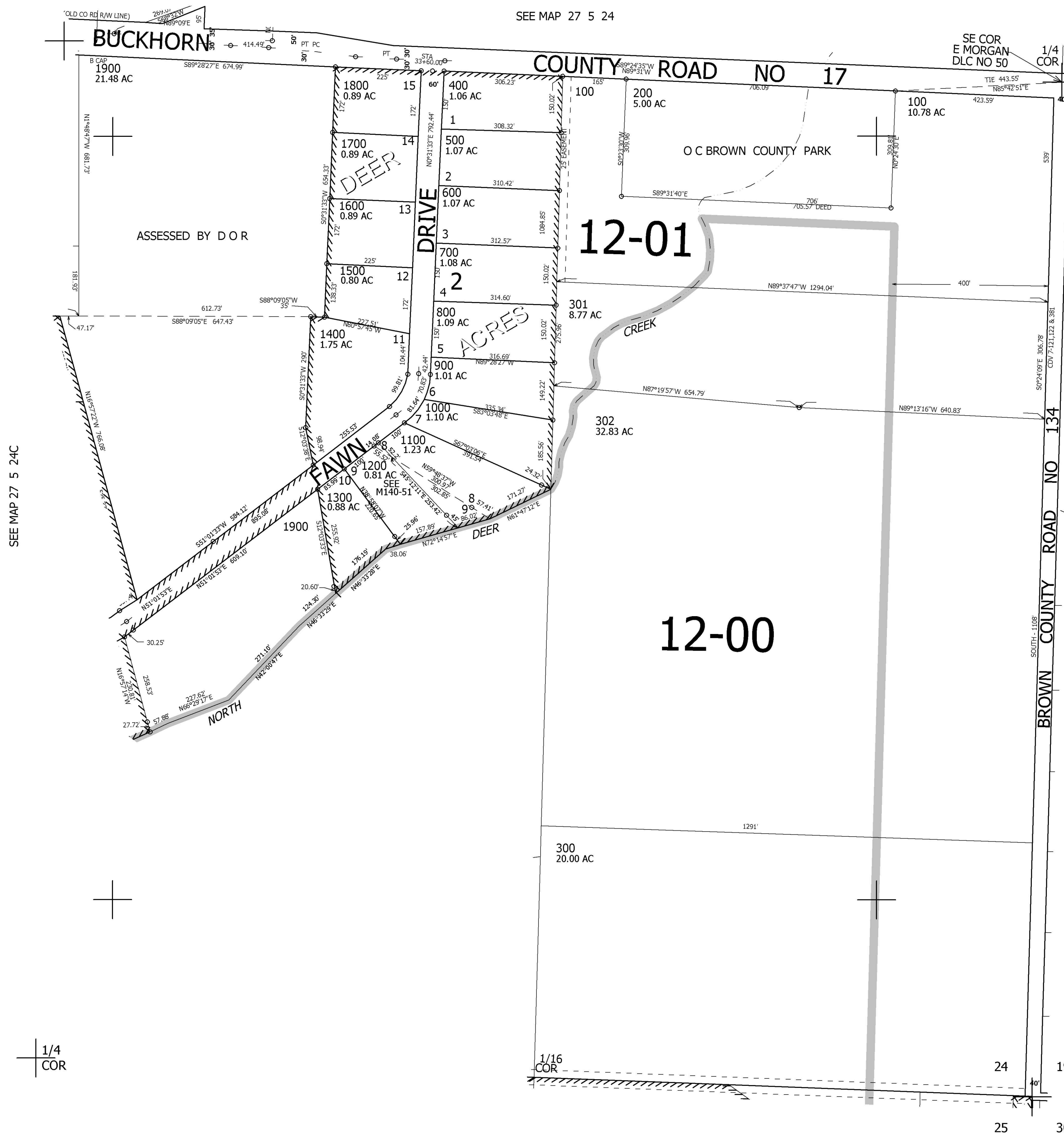


THIS MAP WAS PREPARED FOR ASSESSMENT PURPOSE ONLY.

SE1/4 SEC.24 T.27S. R.5W. W.M.  
DOUGLAS COUNTY  
1" = 200'

REVISED ON  
11-22-05

27 5 24D



CANCELLED NOS  
1101 1201

SEE MAP 27 4 19

571,000

27 5 24D