

THIS MAP WAS PREPARED FOR ASSESSMENT PURPOSE ONLY.

Upper Left:
123°15'46"W 43°12'52"N
4184943E 576187N ft

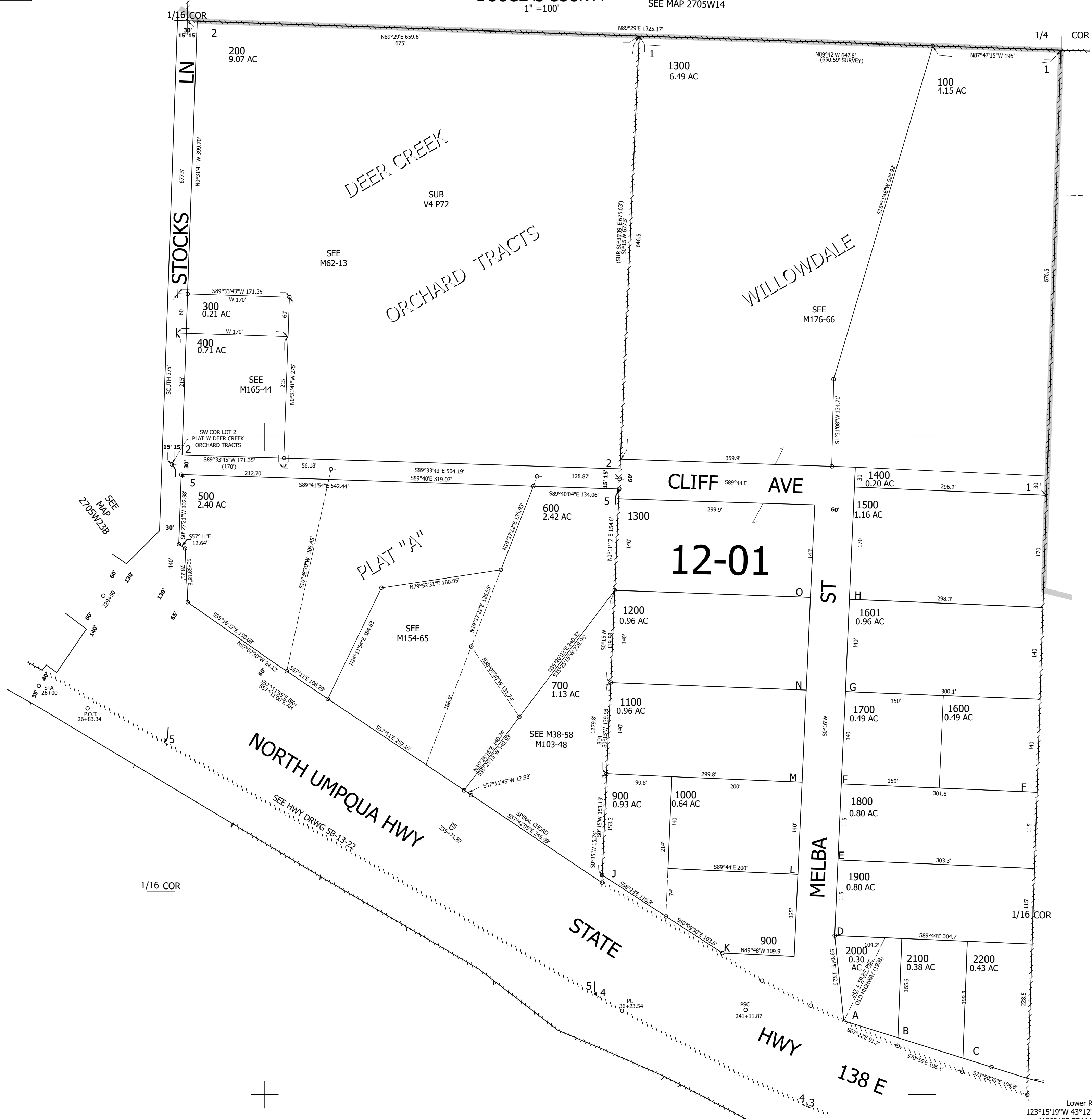
NE1/4 NW1/4 SEC.23 T.27S. R.05W. W.M.
DOUGLAS COUNTY
1" = 100'

SEE MAP 2705W14

Date Exported 2025-01-02

270523BA

CANCELLED NOS:
800 501 101



SEE MAP
2705W23A

270523BA

Lower Right:
123°15'19"W 43°12'35"N
4186918E 574448N ft