

THIS MAP WAS PREPARED FOR ASSESSMENT PURPOSE ONLY.

Upper Left:
123°15'31"W 43°12'53"N
4186055E 576284N ft

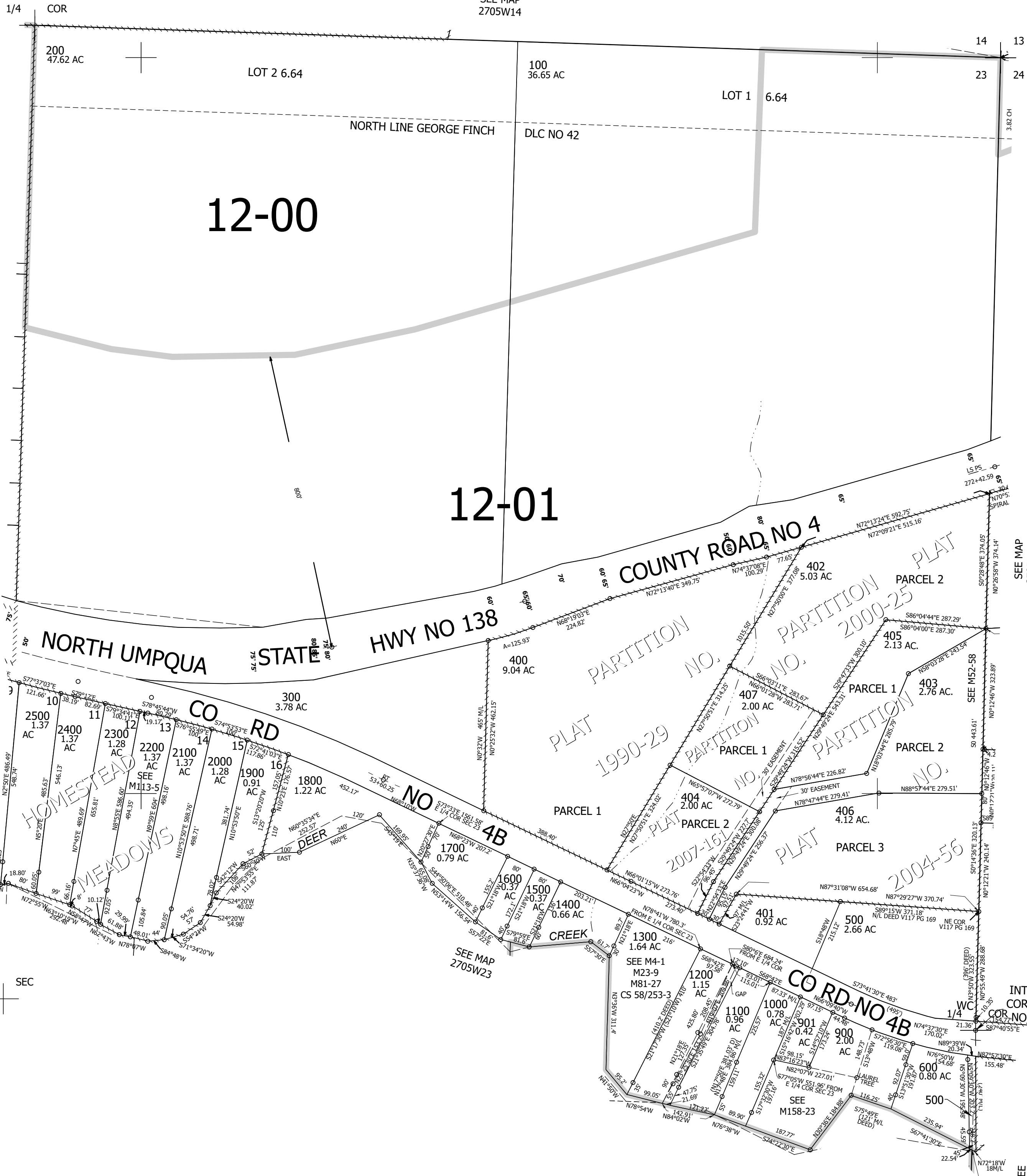
NE1/4 SEC.23 T.27S. R.05W. W.M.
DOUGLAS COUNTY
1" = 200'

Date Exported 2025-05-19

270523A
& INDEX

CANCELLED NOS:
900A1 700 800

SEE MAP
2705W14



SEE MAP
2705W23BA

SEE MAP
2705W23B

SEE MAP
2705W23

SEE MAP
2705W24B

SEE MAP
2705W24C

CEN SEC

270523A
& INDEX

Lower Right:
123°14'36"W 43°12'20"N
4189980E 572807N ft