

THIS MAP WAS PREPARED FOR ASSESSMENT PURPOSE ONLY.

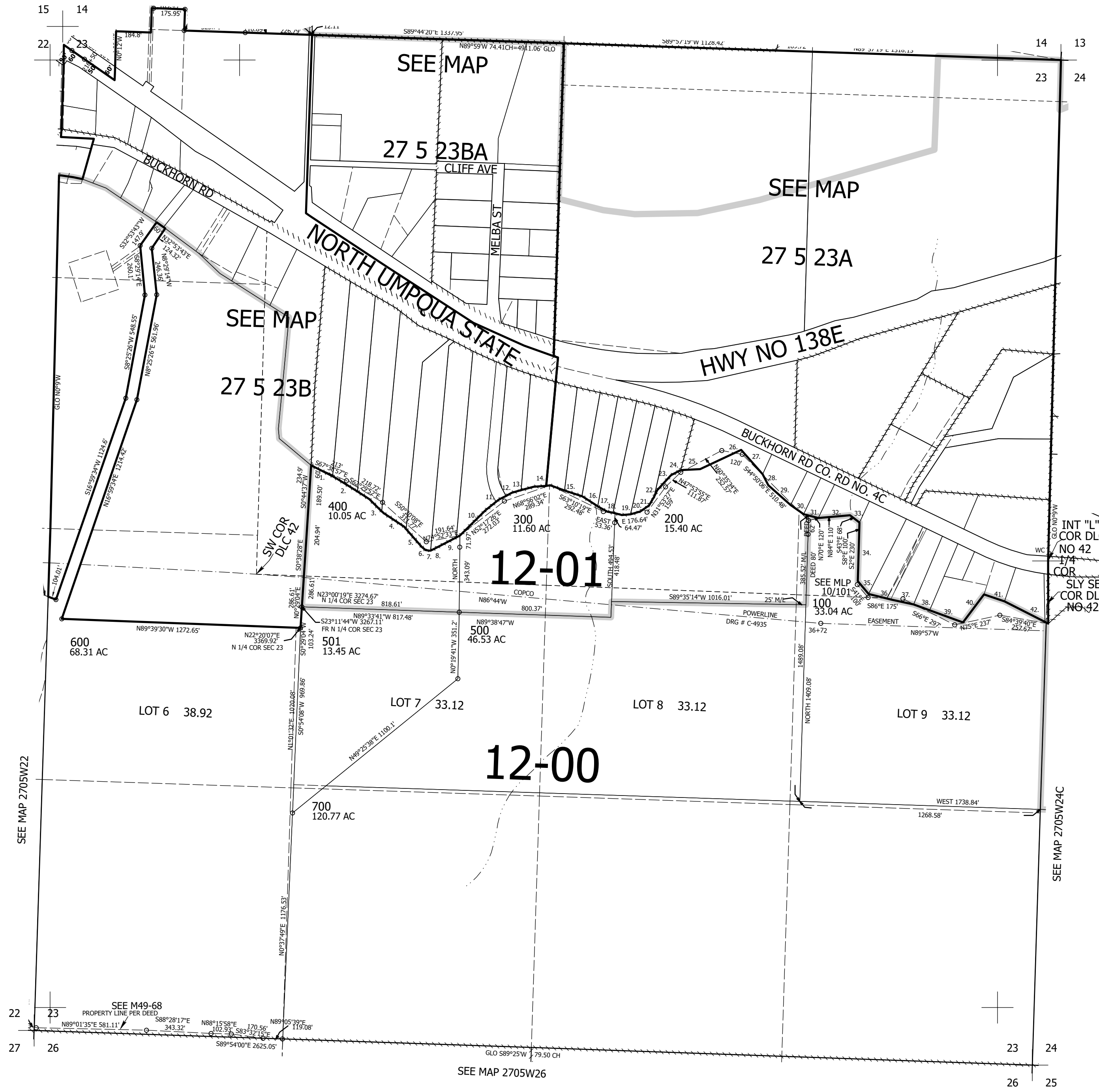
Upper Left:  
123°16'15"W 43°12'58"N  
4182833E 576947N ft

SEC.23 T.27S. R.05W. W.M.  
DOUGLAS COUNTY  
1" = 400'

Date Exported 2025-09-17

CANCELLED NOS:  
701

- DEER CREEK
- 1. N64°14'W 155.78'
- 2. N60°43'W 198'
- 3. N48°40'W 111'
- 4. N60°22'W 126'
- 5. N41°40'W 146'
- 6. N50°12'W 23'
- 7. N87°31'W 29.69'
- 8. S67°15'W 27.31'
- 9. S61°08'W 145'
- 10. S43°45'W 194'
- 11. S49°37'W 88'
- 12. S60°21'W 75'
- 13. S73°21'W 122'
- 14. S84°45'W 87'
- 15. N72°55'W 187'
- 16. N58°47'W 77'
- 17. N62°43'W 72'
- 18. N78°07'W 78'
- 19. S84°48'W 44'
- 20. S71°34'20"W 54.76'
- 21. S54°21'W 57'
- 22. S24°20'W 95'
- 23. S42°12'W 108'
- 24. S60°40'W 52'
- 25. EAST 100'
- 26. N60°E 240'
- 27. S45°19'E 169.95'
- 28. N35°37'36"W 65.08'
- 29. N53°14'W 156.54'
- 30. S57°22'E 81.6'
- 31. S79°54'E 81.6'
- 32. N79°37'E 167.5'
- 33. S57°30'E 61.7'
- 34. N3°36'W 311.4'
- 35. N41°50'W 95.2'
- 36. N78°54'W 99.05'
- 37. N84°02'W 164.6'
- 38. N76°38'W 89.9'
- 39. S74°22'30"E 187.77'
- 40. N30°36'E 184.88'
- 41. S75°49'E 116.25'
- 42. S67°41'30"E 258.48'



SEE MAP 2705W22

SEE MAP 2705W24C

SEE MAP 2705W26

Lower Right:  
123°14'26"W 43°11'52"N  
4190682E 569992N ft