

THIS MAP WAS PREPARED FOR ASSESSMENT PURPOSE ONLY.

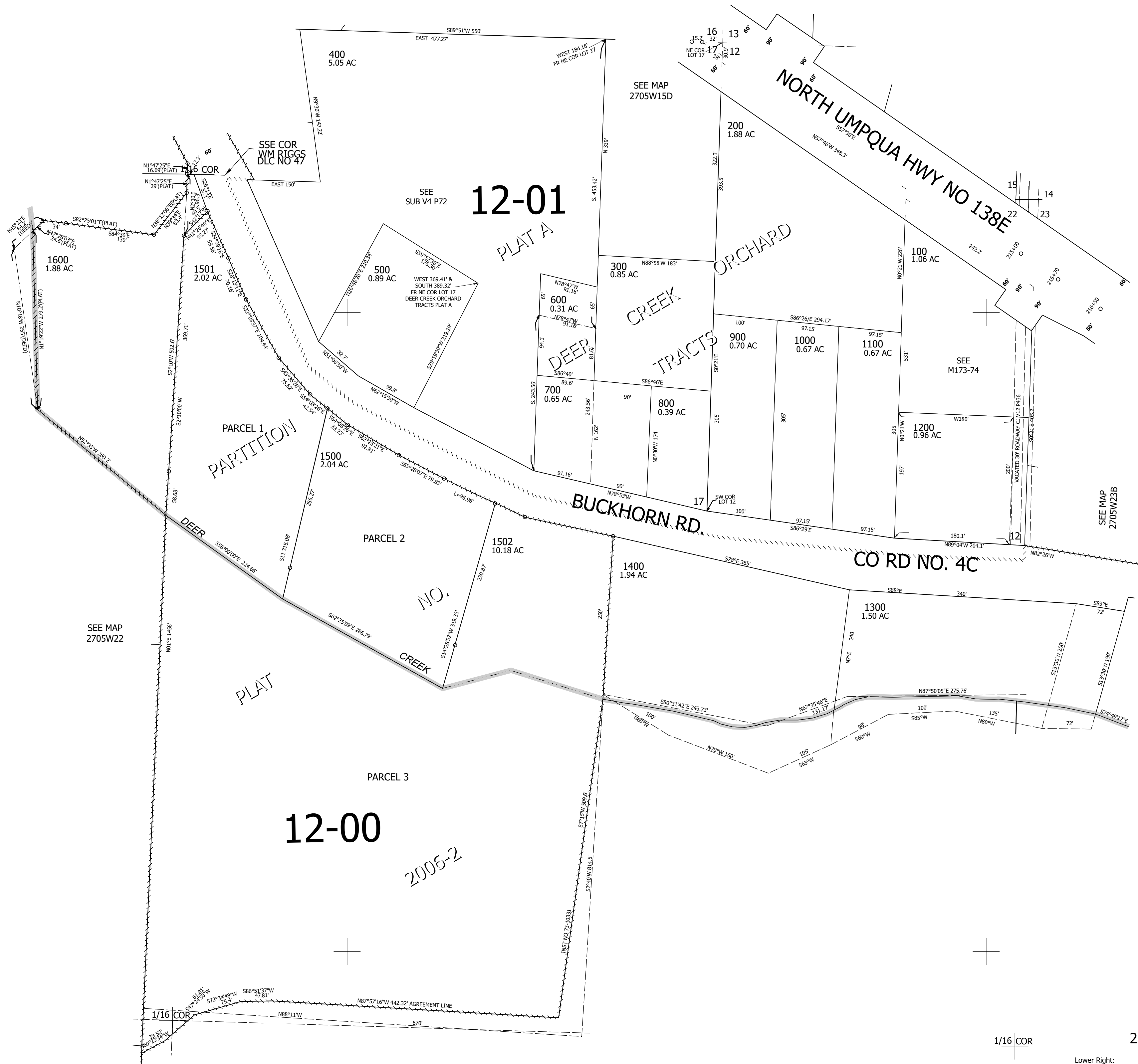
Upper Left:
123°16'21"W 43°12'54"N
4182363E 576530N ft

NE1/4 NE1/4 SEC.22 T.27S. R.05W. W.M.
DOUGLAS COUNTY
1" = 100'

Date Expored 2025-01-02

270522AA

CANCELLED NOS:
101



SEE MAP 2705W22

SEE MAP 2705W15D

SEE SUB V4 P72

SEE M173-74

SEE MAP 2705W23B

1/16 COR

270522AA

Lower Right:
123°15'53"W 43°12'38"N
4184338E 574791N ft