

THIS MAP WAS PREPARED FOR ASSESSMENT PURPOSE ONLY.

# NW1/4 SEC.21 T.27S. R.5W. W.M. DOUGLAS COUNTY

1" = 200'

REVISED ON 3-20-19

## 27 5 21B ROSEBURG

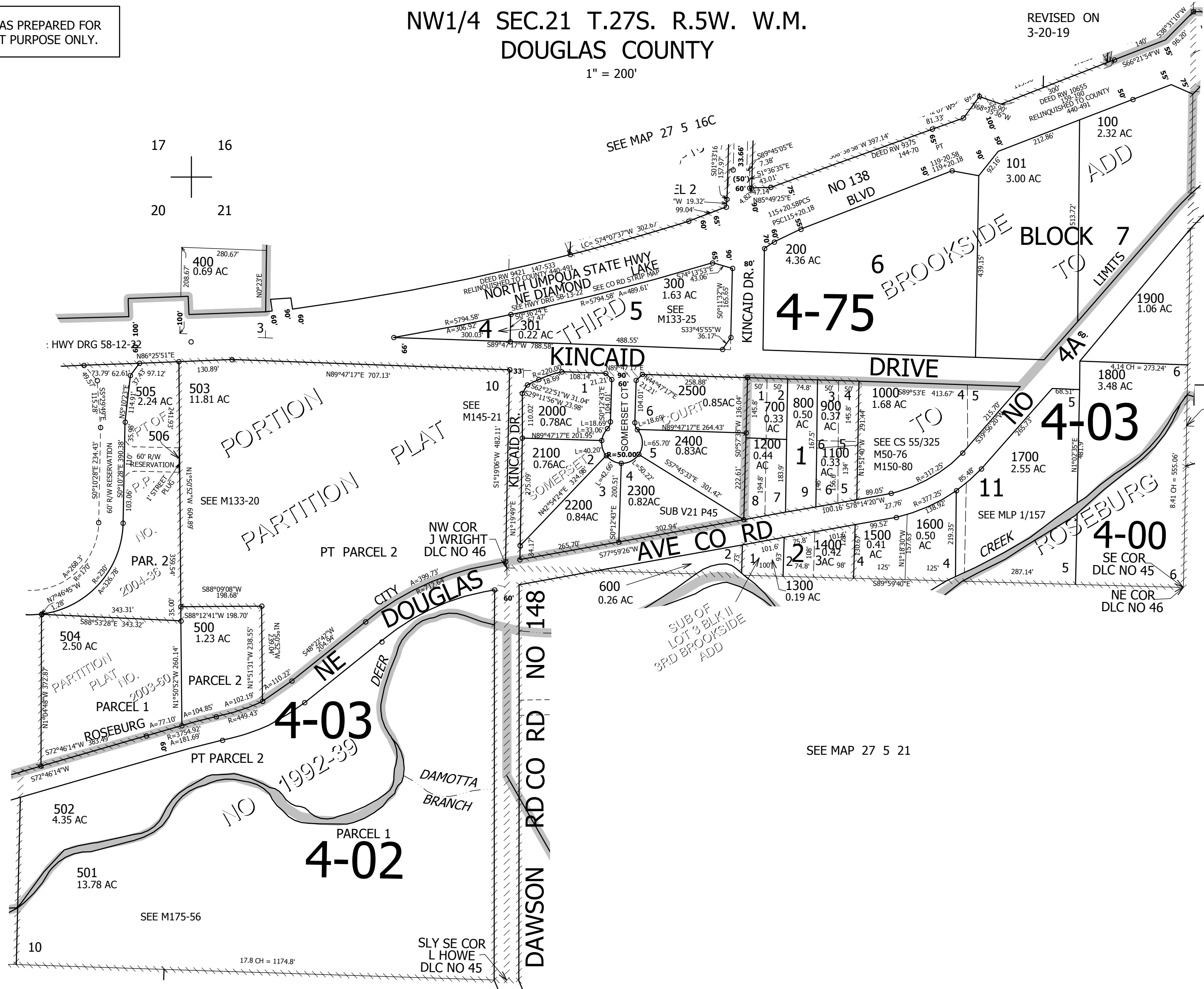
CANCELLED NO'S 507 508 101A1 101A2

SEE MAP 27 5 16DC

1/4 COR

SEE MAP 27 5 21AB

SEE MAP 27 5 21



SEE MAP 27 5 20

SEE MAP 27 5 21

SEE MAP 27 5 21

1/4 COR

CEN SEC

574,000

4,176,000

## 27 5 21B ROSEBURG