

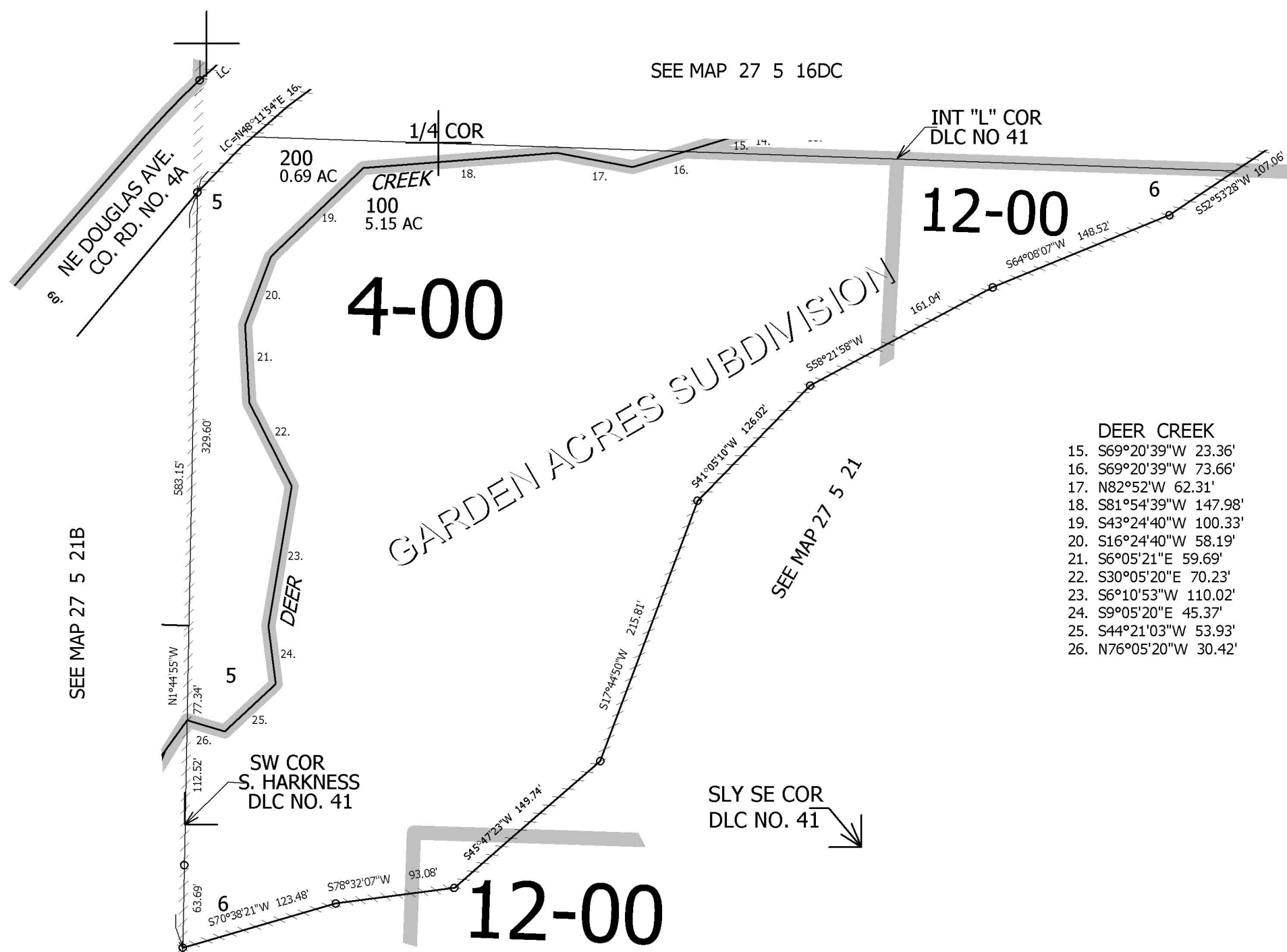
THIS MAP WAS PREPARED FOR ASSESSMENT PURPOSE ONLY.

NW1/4 NE1/4 SEC.21 T.27S. R.5W. W.M.
DOUGLAS COUNTY

REVISED ON
4-9-01

27 5 21AB
ROSEBURG

1" = 100'



1/16
COR

CANCELLED NO'S

SEE MAP 27 5 21B

SE COR
DLC NO. 45

NE COR
DLC NO. 46

1/16
COR

1/16
COR

575,500

4,177,000

27 5 21AB
ROSEBURG