

THIS MAP WAS PREPARED FOR ASSESSMENT PURPOSE ONLY.

Upper Left:  
123°18'41"W 43°13'N  
4172050E 577464N ft

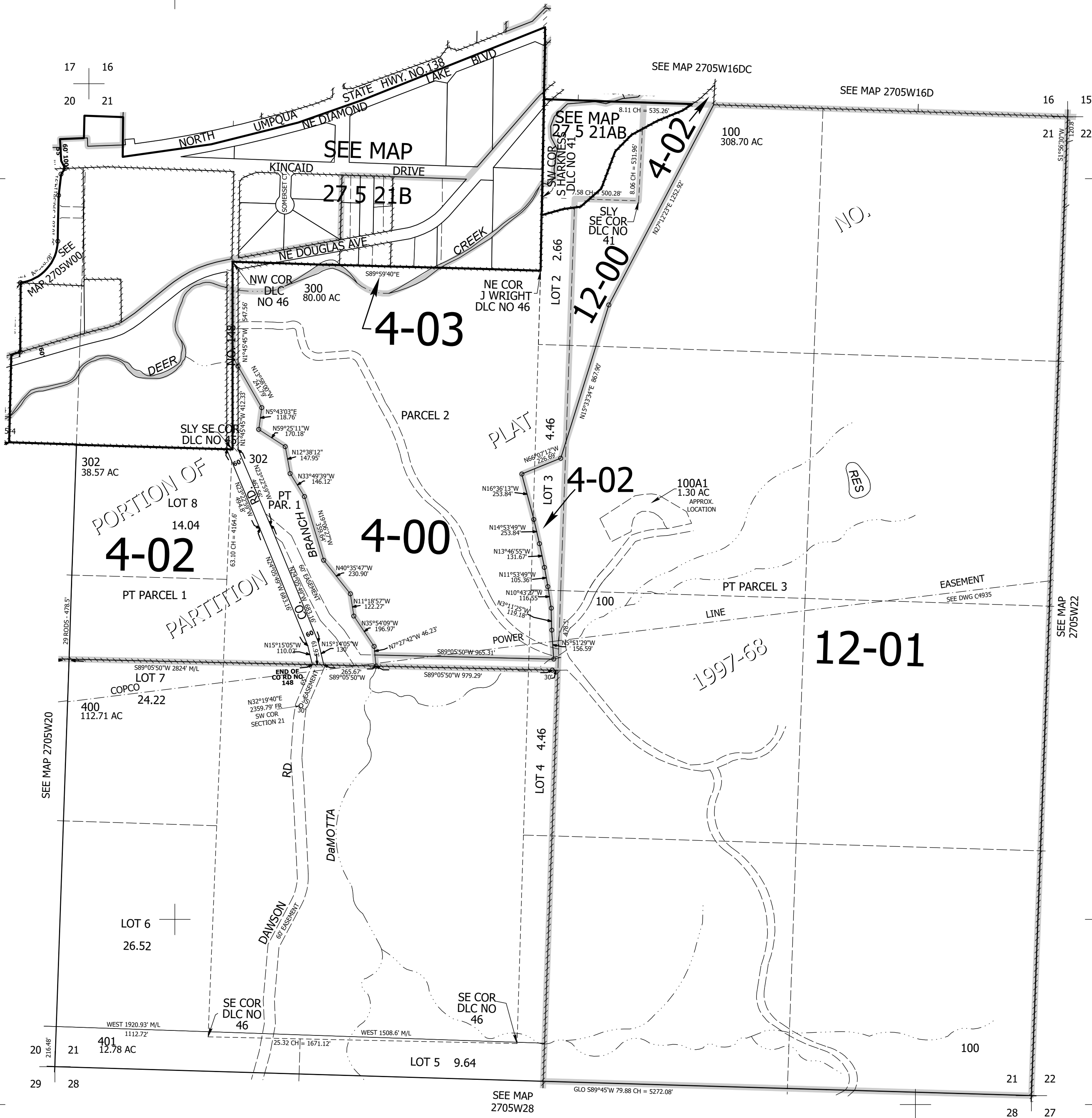
SEC.21 T.27S. R.05W. W.M.  
DOUGLAS COUNTY  
1" = 400'

Date Exported 2024-12-05

270521  
& INDEX  
Roseburg

CANCELLED NOS:  
101 201 301  
200 303 102

- PARCEL 100
1. S44°13'12"W 115.46'
  2. S52°53'28"W 107.16'
  3. S64°08'07"W 148.52'
  4. S58°21'58"W 161.09'
  5. S41°05'10"W 126.02'
  6. S17°44'50"W 215.81'
  7. S45°47'23"W 149.74'
  8. S78°32'07"W 93.08'
  9. S70°38'21"W 123.48'



17 16  
20 21

SEE MAP 2705W16DC

SEE MAP 2705W16D

100 308.70 AC

SEE MAP 2705W20

SEE MAP 2705W22

20 21  
29 28

SEE MAP 2705W28

21 22  
28 27

270521  
& INDEX  
Roseburg

Lower Right:  
123°16'51"W 43°11'54"N  
4179900E 570509N ft