

THIS MAP WAS PREPARED FOR ASSESSMENT PURPOSE ONLY.

# NW1/4 SW1/4 SEC.20 T.27S. R.5W. W.M. DOUGLAS COUNTY

REVISED ON  
3-20-19

## 27 5 20CB ROSEBURG

1" = 100'

SEE MAP 27 5 20BC

1/16  
COR

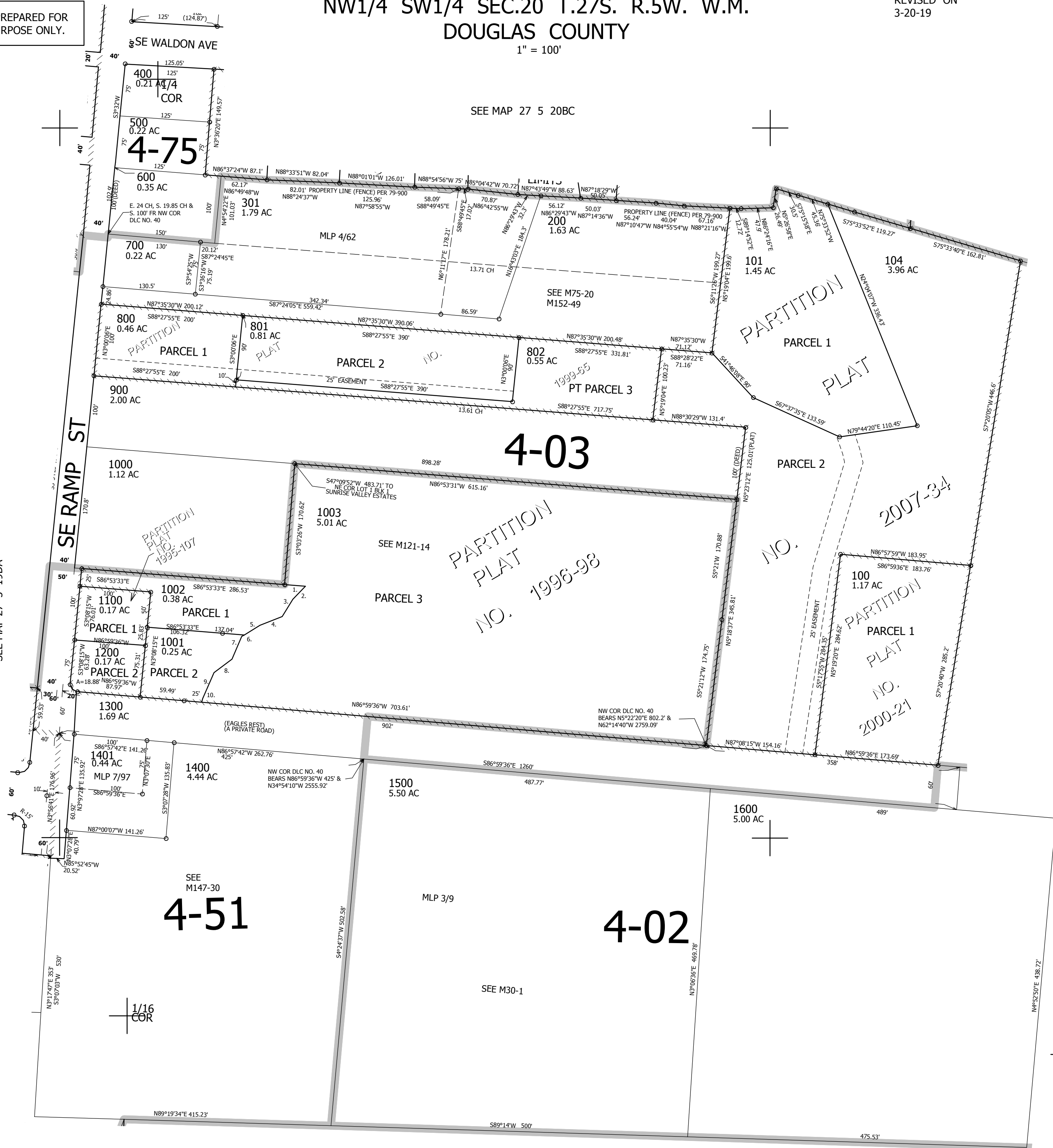
CANCELLED NO'S  
201 1201 1101  
300 302 102  
103 202 803  
1402 203

PP 1996-98  
1. S86°53'40"E 30.79'  
2. S42°23'35"W 25.2'  
3. S30°23'22"W 28.66'  
4. N67°09'25"E 33.64'  
5. S56°57'10"W 25.95'  
6. S56°55'20"W 4.07'  
7. S22°17'49"W 8.06'  
8. S21°52'21"W 26.62'  
9. S51°33'04"W 31.62'  
10. S22°04'12"W 40.1'  
11. S14°34'49"W 7.03'

SEE MAP 27 5 20

573,000

SEE MAP 27 5 19DA



### 4-51

SEE M30-1

### 4-02

SEE MAP 27 5 20

4,169,000

## 27 5 20CB ROSEBURG