

THIS MAP WAS PREPARED FOR ASSESSMENT PURPOSE ONLY.

SE1/4 NW1/4 SEC.20 T.27S. R.5W. W.M. DOUGLAS COUNTY

REVISED ON 6-17-19

27 5 20BD ROSEBURG

1" = 100'

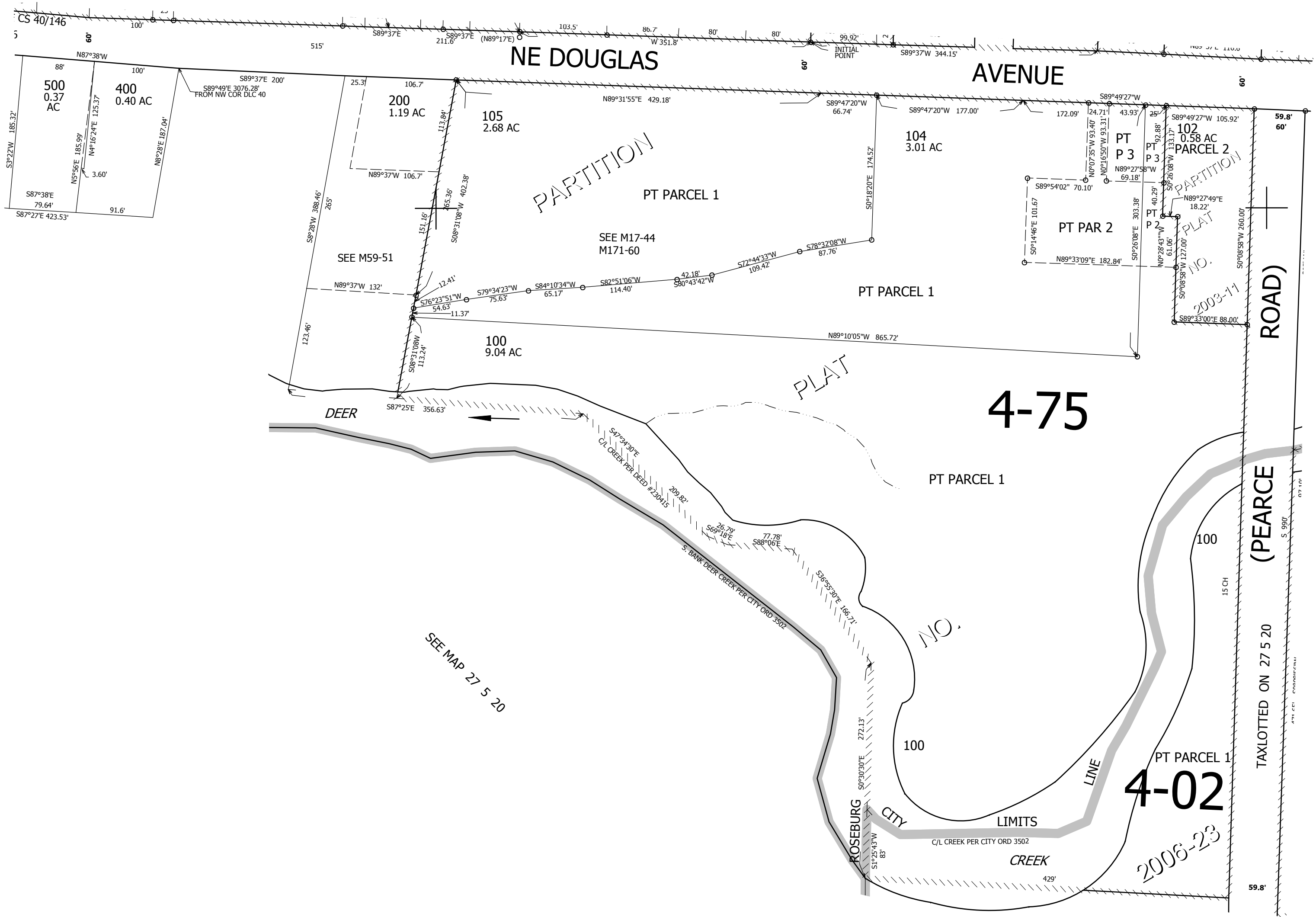
CANCELLED NO'S
401 400A1 101
300 106 107
108 103

1/16 COR

SEE MAP 27 5 20BA

1/16 COR

SEE MAP 27 5 20BC



(PEARCE ROAD)

SEE MAP 27 5 20AC

1/16 COR

574,000

CEN SEC

4,171,000

27 5 20BD ROSEBURG