

THIS MAP WAS PREPARED FOR ASSESSMENT PURPOSE ONLY.

SW1/4 NW1/4 SEC.20 T.27S. R.5W. W.M.
DOUGLAS COUNTY

REVISED ON
3-20-19

27 5 20BC
& INDEX
ROSEBURG

1" = 100'

1/16 COR

SEE MAP 27 5 20BB

1/16 COR



CANCELLED NO'S
701 901 1600
1700 1800 1900
3001 2901 700
900 1000 1002
1001 8101 8400
8500 8600 8700
8800 8300 9400

SEE MAP 27 5 20BD

SEE MAP 27 5 19AD

SEE MAP 27 5 20CB

4,169,000

1/16 COR

574,000

27 5 20BC
& INDEX
ROSEBURG

THIS MAP WAS PREPARED FOR ASSESSMENT PURPOSE ONLY.

SW1/4 NW1/4 SEC.20 T.27S. R.5W. W.M.
SUPPLEMENTAL
DOUGLAS COUNTY
1" = 50'

REVISED ON
3-20-19

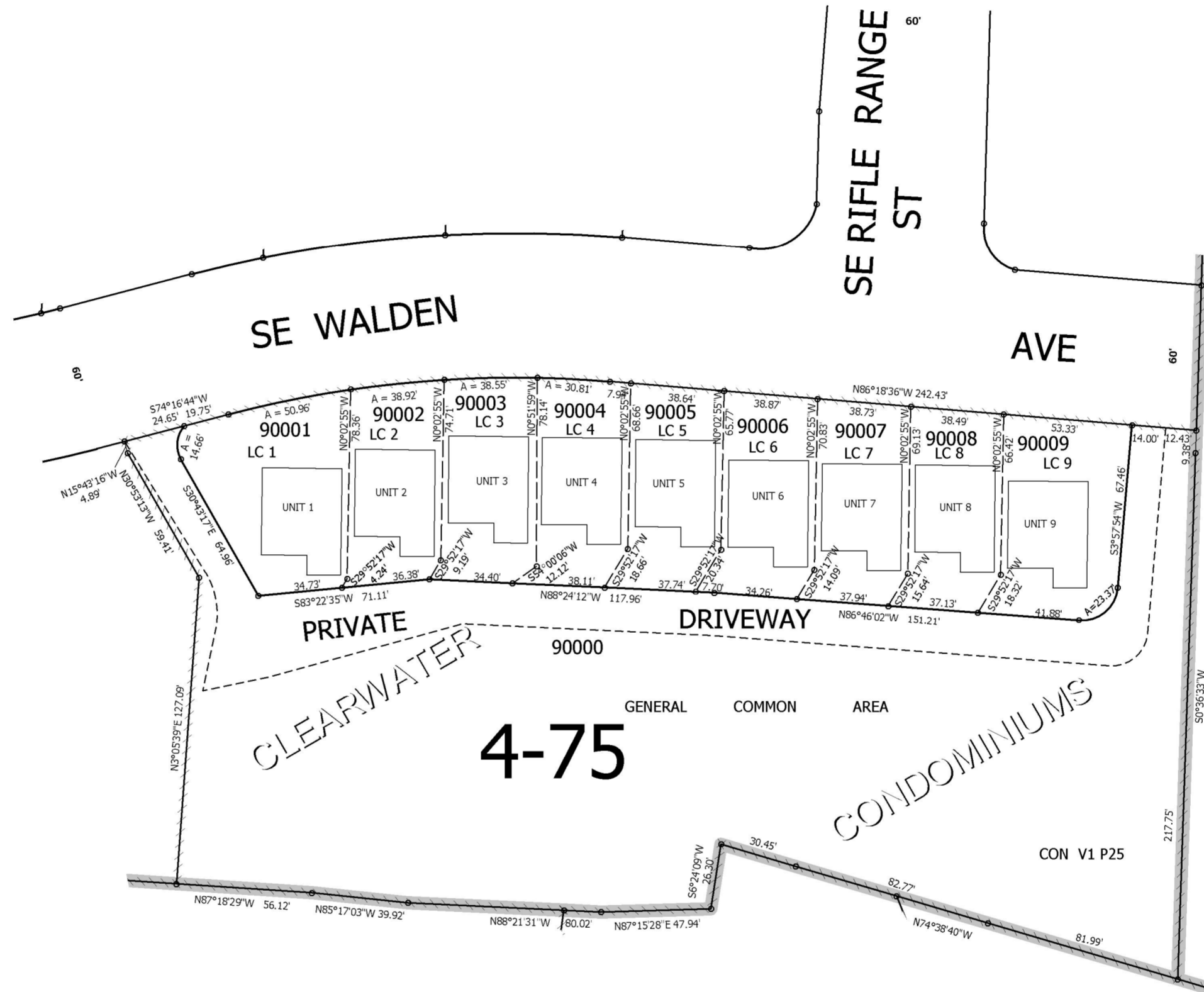
27 5 20BC
SUPPLEMENTAL
ROSEBURG

CANCELLED NO'S

SEE MAP 27 5 20BC

SEE MAP 27 5 20BC

SEE MAP 27 6 20BD



SEE MAP 27 5 20CB

27 5 20BC
SUPPLEMENTAL
ROSEBURG