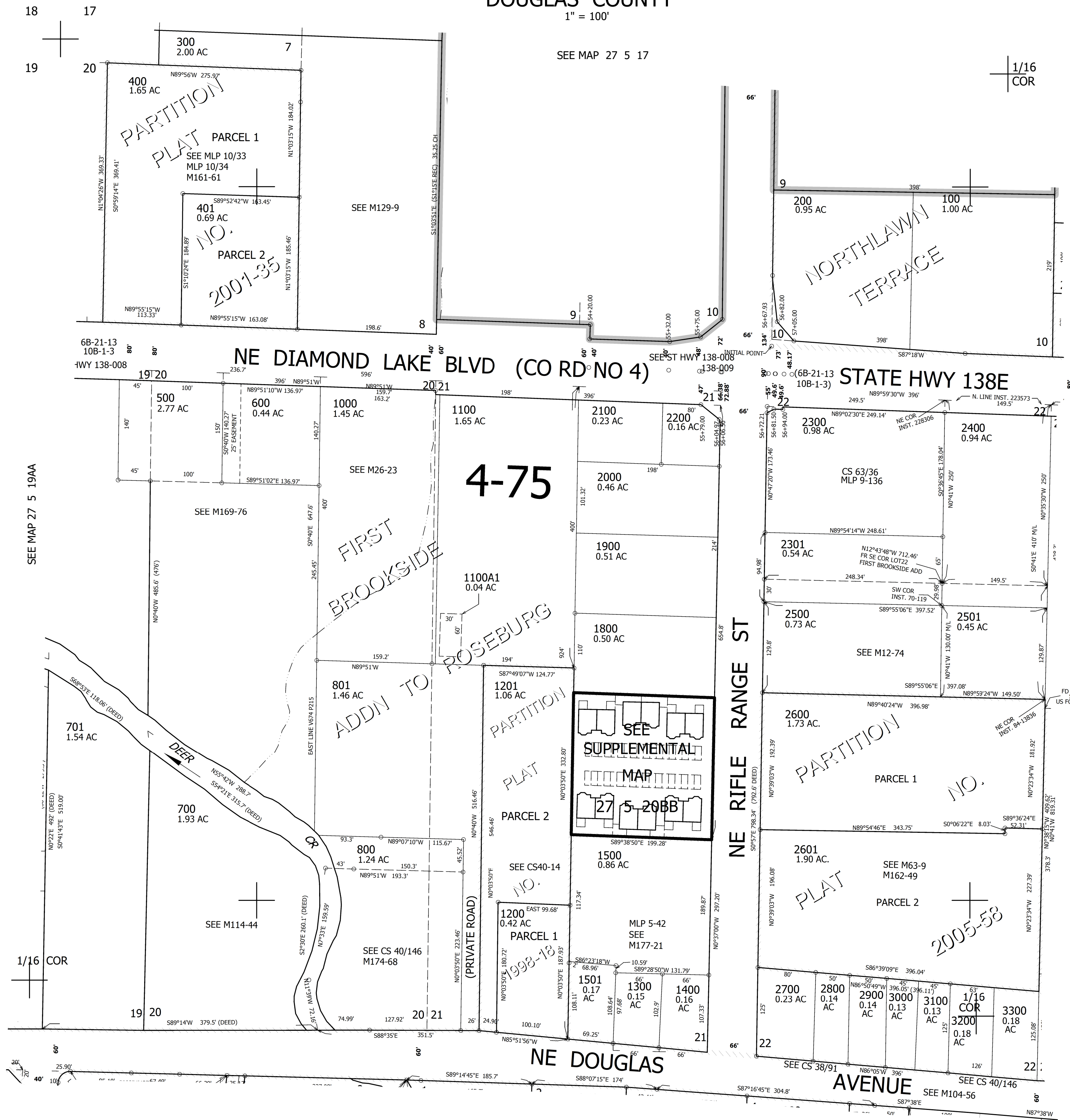


THIS MAP WAS PREPARED FOR ASSESSMENT PURPOSE ONLY.

NW1/4 NW1/4 SEC.20 T.27S. R.5W. W.M.
DOUGLAS COUNTY
1" = 100'

REVISED ON
6-8-20

27 5 20BB
& INDEX
ROSEBURG



CANCELLED NO'S
900 1600 1700
601 802 1500A1

SEE MAP 27 5 20BA

575,500

27 5 20BB
& INDEX
ROSEBURG

SEE MAP 27 5 20BC

4,169,000

THIS MAP WAS PREPARED FOR ASSESSMENT PURPOSE ONLY.

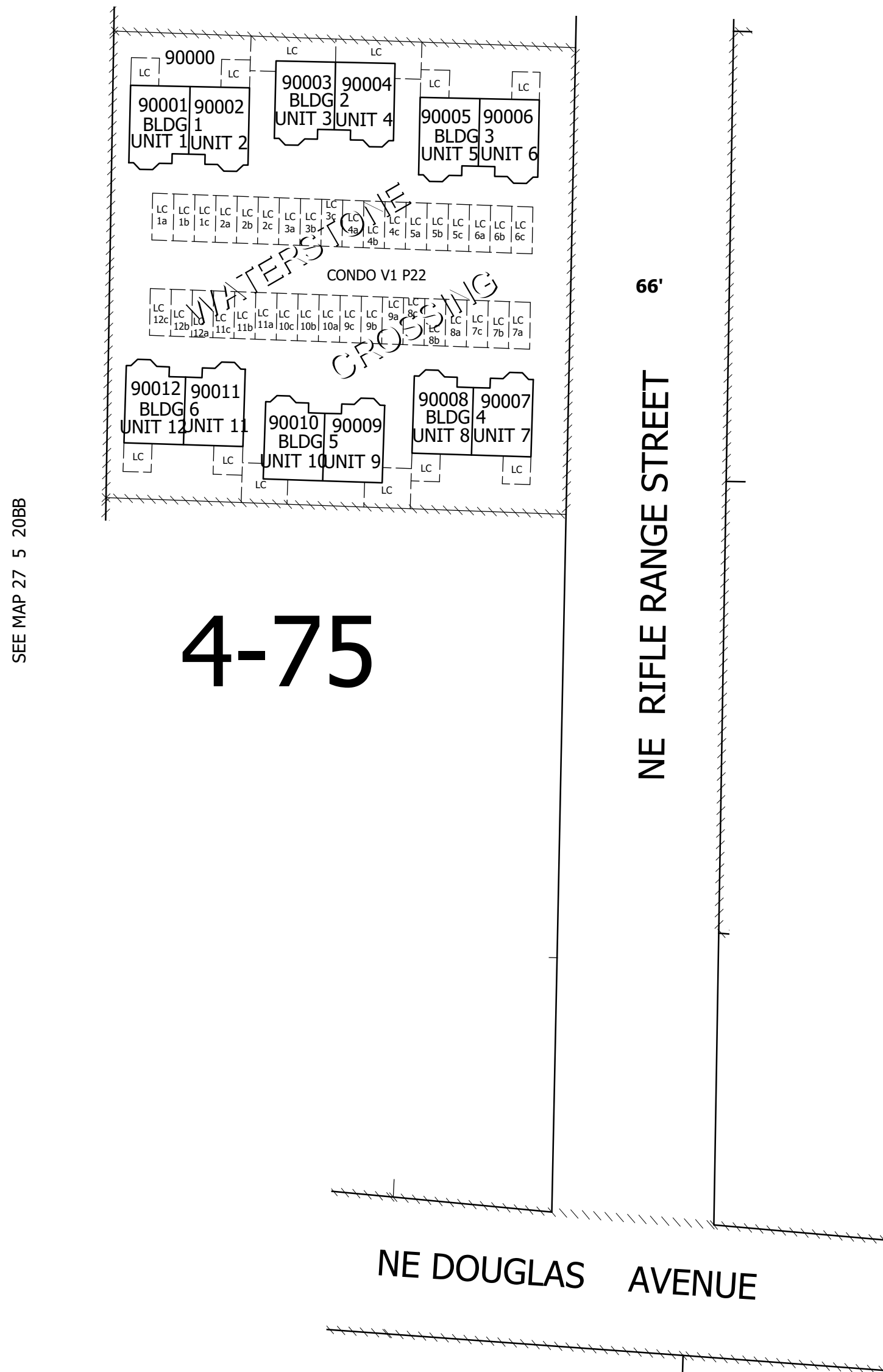
NW1/4 NW1/4 SEC.20 T.27S. R.5W. W.M.
SUPPLEMENTAL
DOUGLAS COUNTY
1" = 50'

REVISED ON
3-20-19

27 5 20BB
SUPPLEMENTAL
ROSEBURG

CANCELLED NO'S

SEE MAP 27 5 20BB



SEE MAP 27 5 20BB

SEE MAP 27 6 20BA

SEE MAP 27 5 20BB

27 5 20BB
SUPPLEMENTAL
ROSEBURG