

THIS MAP WAS PREPARED FOR ASSESSMENT PURPOSE ONLY.

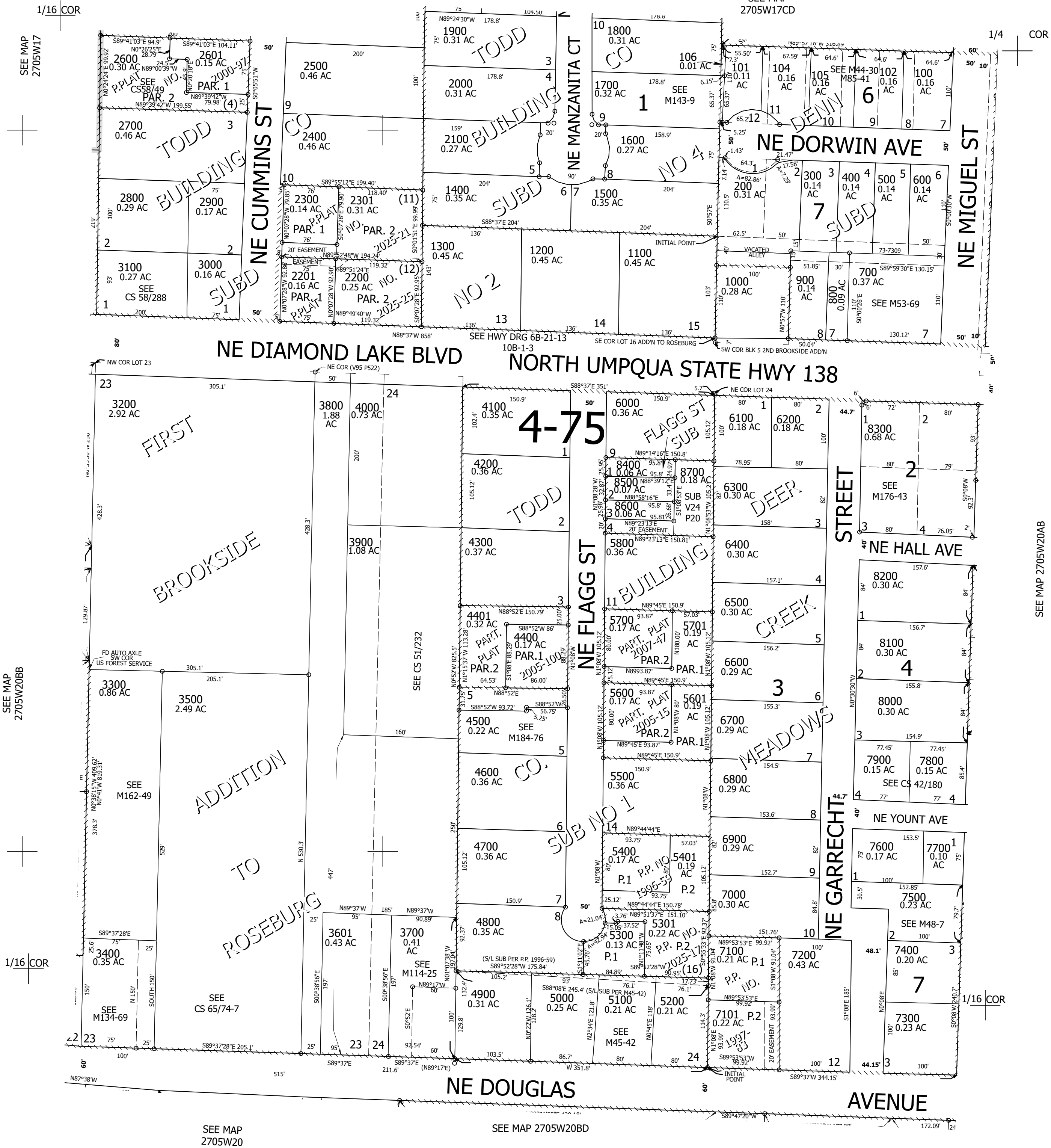
Upper Left:  
123°19'18"W 43°12'52"N  
4169219E 576763N ft

NE1/4 NW1/4 SEC.20 T.27S. R.05W. W.M.  
DOUGLAS COUNTY  
1" = 100'

Date Exported 2025-10-23

270520BA  
Roseburg

CANCELLED NOS:  
103 3600 3301  
107 5900 4501



SEE MAP 2705W20

SEE MAP 2705W20BD

SEE MAP 2705W20AB

270520BA  
Roseburg

Lower Right:  
123°18'51"W 43°12'36"N  
4171194E 575024N ft