



THIS MAP WAS PREPARED FOR ASSESSMENT PURPOSE ONLY.

Upper Left:  
123°18'55"W 43°12'42"N  
4170911E 575633N ft

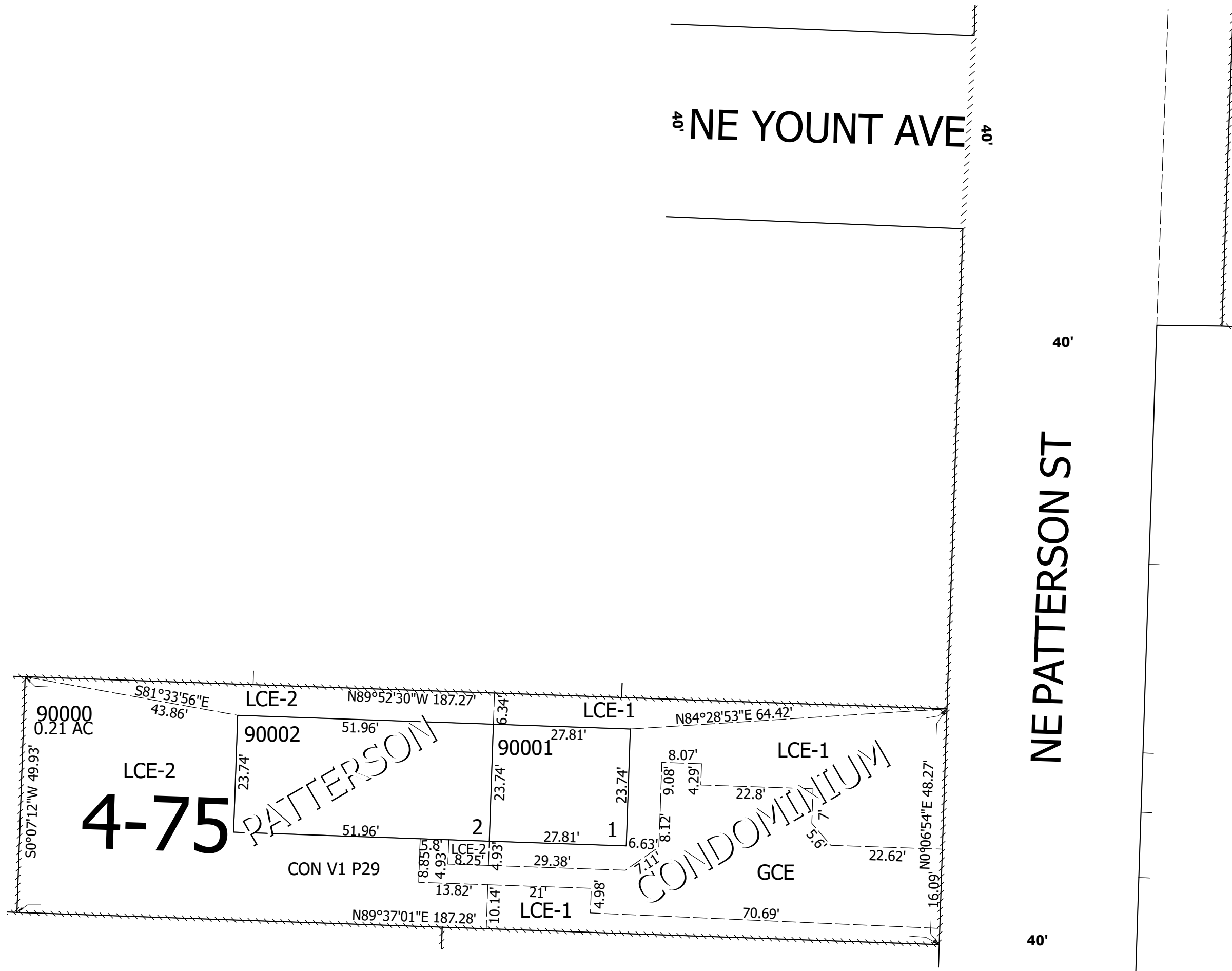
SUPPLEMENTAL NW1/4 NE1/4 SEC.20 T.27S. R.5W. W.M.  
DOUGLAS COUNTY  
1" = 20'

Date Exported 2025-06-24

270520ABSUPP

CANCELLED NOS:

LCE = LIMITED COMMON ELEMENT  
GCE = GENERAL COMMON ELEMENT



Lower Right:  
123°18'50"W 43°12'38"N  
4171304E 575285N ft

270520ABSUPP