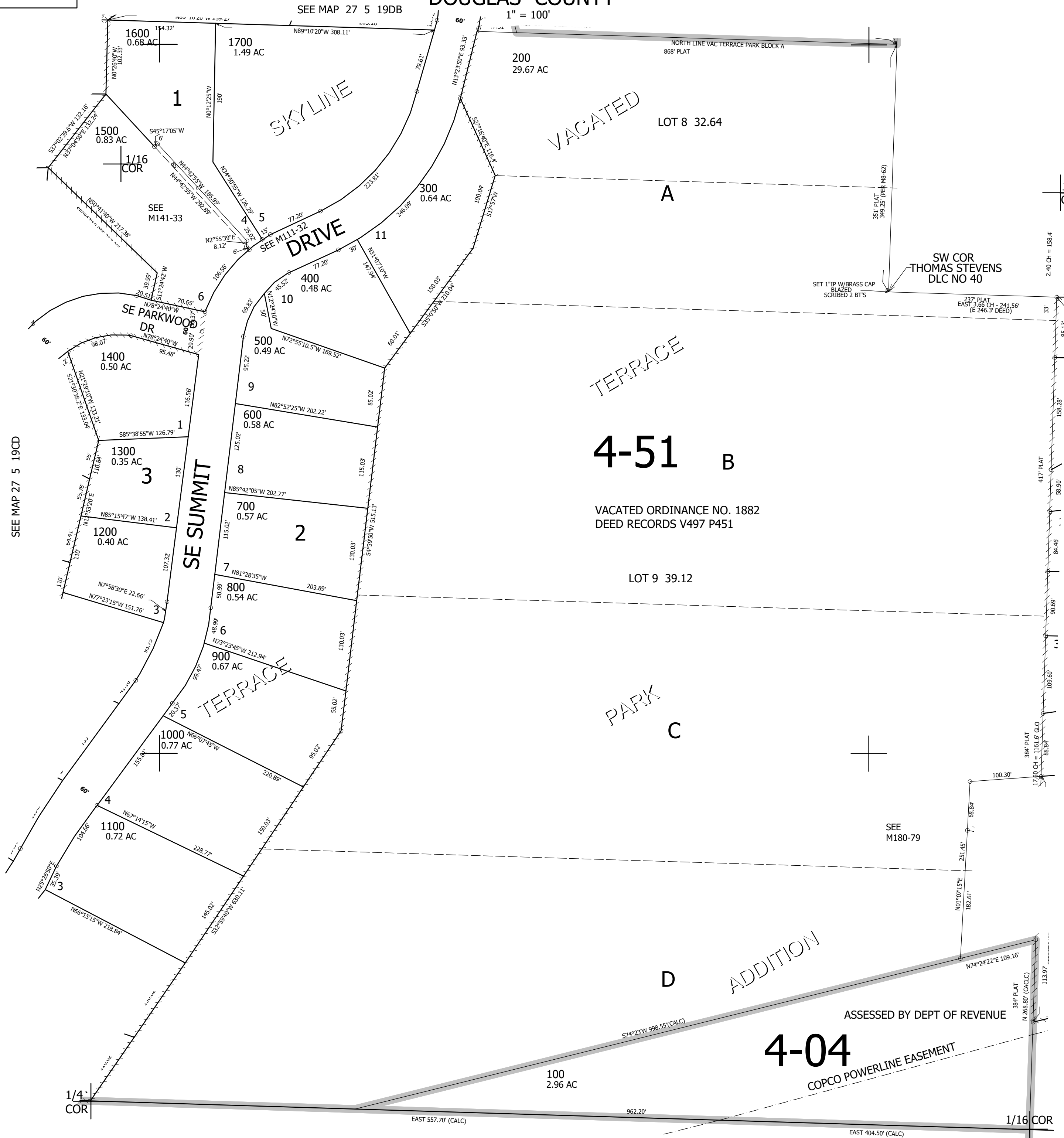


THIS MAP WAS PREPARED FOR ASSESSMENT PURPOSE ONLY.

SW1/4 SE1/4 SEC.19 T.27S. R.5W. W.M.
DOUGLAS COUNTY

REVISED ON
6-14-22

27 5 19DC
ROSEBURG



CANCELLED NO'S
1601 201 202

SEE MAP 27 5 19DD

572,000

27 5 19DC
ROSEBURG

SEE MAP 27 5 19CD

SEE MAP 27 5 30

4,166,500

ASSESSED BY DEPT OF REVENUE

4-04

COPCO POWERLINE EASEMENT

D

ADDITION

PARK

C

4-51 B

VACATED ORDINANCE NO. 1882
DEED RECORDS V497 P451

LOT 9 39.12

TERRACE

A

VACATED

LOT 8 32.64

SKYLINE

DRIVE

SE SUMMIT

SE PARKWOOD
DR

TERRACE

1/4
COR

1/16
COR

1/16
COR

SW COR
THOMAS STEVENS
DLC NO 40

SET 1" TIP W/BRASS CAP
BLAZED
SCRIBED 2 BT'S

227' PLAT
EAST 3.60' CH - 241.56'
(E 246.3' DEED)

2.40' CH = 158.4'

417' PLAT

58.90'

84.46'

90.69'

109.60'

116.16' CLO

88.88'

100.30'

68.84'

251.45'

182.61'

113.97'

384' PLAT
N 268.80' (CALC)

113.97'

574°23'W 998.55'(CALC)

N74°24'22"E 109.16'

100
2.96 AC

962.20'

EAST 404.50' (CALC)

EAST 557.70' (CALC)

1600
0.68 AC

1700
1.49 AC

200
29.67 AC

1500
0.83 AC

1600
0.68 AC

1700
1.49 AC

300
0.64 AC

400
0.48 AC

500
0.49 AC

600
0.58 AC

700
0.57 AC

800
0.54 AC

900
0.67 AC

1000
0.77 AC

1100
0.72 AC

1/4
COR

1/16
COR

1/16
COR

SW COR
THOMAS STEVENS
DLC NO 40

SET 1" TIP W/BRASS CAP
BLAZED
SCRIBED 2 BT'S

227' PLAT
EAST 3.60' CH - 241.56'
(E 246.3' DEED)

2.40' CH = 158.4'

417' PLAT

58.90'

84.46'

90.69'

109.60'

116.16' CLO

88.88'

100.30'

68.84'

251.45'

182.61'

113.97'

384' PLAT
N 268.80' (CALC)

113.97'

574°23'W 998.55'(CALC)

N74°24'22"E 109.16'

100
2.96 AC

962.20'

EAST 404.50' (CALC)

EAST 557.70' (CALC)

1600
0.68 AC

1700
1.49 AC

200
29.67 AC

1500
0.83 AC

1600
0.68 AC

1700
1.49 AC

300
0.64 AC

400
0.48 AC

500
0.49 AC

600
0.58 AC

700
0.57 AC

800
0.54 AC

900
0.67 AC

1000
0.77 AC

1100
0.72 AC

1/4
COR

1/16
COR

1/16
COR

SW COR
THOMAS STEVENS
DLC NO 40

SET 1" TIP W/BRASS CAP
BLAZED
SCRIBED 2 BT'S

227' PLAT
EAST 3.60' CH - 241.56'
(E 246.3' DEED)

2.40' CH = 158.4'

417' PLAT

58.90'

84.46'

90.69'

109.60'

116.16' CLO

88.88'

100.30'

68.84'

251.45'

182.61'

113.97'

384' PLAT
N 268.80' (CALC)

113.97'

574°23'W 998.55'(CALC)

N74°24'22"E 109.16'

100
2.96 AC

962.20'

EAST 404.50' (CALC)

EAST 557.70' (CALC)

1600
0.68 AC

1700
1.49 AC

200
29.67 AC

1500
0.83 AC

1600
0.68 AC

1700
1.49 AC

300
0.64 AC

400
0.48 AC

500
0.49 AC

600
0.58 AC

700
0.57 AC

800
0.54 AC

900
0.67 AC

1000
0.77 AC

1100
0.72 AC

1/4
COR

1/16
COR

1/16
COR

SW COR
THOMAS STEVENS
DLC NO 40

SET 1" TIP W/BRASS CAP
BLAZED
SCRIBED 2 BT'S

227' PLAT
EAST 3.60' CH - 241.56'
(E 246.3' DEED)

2.40' CH = 158.4'

417' PLAT

58.90'

84.46'

90.69'

109.60'

116.16' CLO

88.88'

100.30'

68.84'

251.45'

182.61'

113.97'

384' PLAT
N 268.80' (CALC)

113.97'

574°23'W 998.55'(CALC)

N74°24'22"E 109.16'

100
2.96 AC

962.20'

EAST 404.50' (CALC)

EAST 557.70' (CALC)

1600
0.68 AC

1700
1.49 AC

200
29.67 AC

1500
0.83 AC

1600
0.68 AC

1700
1.49 AC

300
0.64 AC

400
0.48 AC

500
0.49 AC

600
0.58 AC

700
0.57 AC

800
0.54 AC

900
0.67 AC

1000
0.77 AC

1100
0.72 AC

1/4
COR

1/16
COR

1/16
COR

SW COR
THOMAS STEVENS
DLC NO 40

SET 1" TIP W/BRASS CAP
BLAZED
SCRIBED 2 BT'S

227' PLAT
EAST 3.60' CH - 241.56'
(E 246.3' DEED)

2.40' CH = 158.4'

417' PLAT

58.90'

84.46'

90.69'

109.60'

116.16' CLO

88.88'

100.30'

68.84'

251.45'

182.61'

113.97'

384' PLAT
N 268.80' (CALC)

113.97'

574°23'W 998.55'(CALC)

N74°24'22"E 109.16'

100
2.96 AC

962.20'

EAST 404.50' (CALC)

EAST 557.70' (CALC)

1600
0.68 AC

1700
1.49 AC

200
29.67 AC

1500
0.83 AC

1600
0.68 AC

1700
1.49 AC

300
0.64 AC

400
0.48 AC

500
0.49 AC

600
0.58 AC

700
0.57 AC

800
0.54 AC

900
0.67 AC

1000
0.77 AC

1100
0.72 AC

1/4
COR

1/16
COR

1/16
COR

SW COR
THOMAS STEVENS
DLC NO 40

SET 1" TIP W/BRASS CAP
BLAZED
SCRIBED 2 BT'S

227' PLAT
EAST 3.60' CH - 241.56'
(E 246.3' DEED)

2.40' CH = 158.4'

417' PLAT

58.90'

84.46'

90.69'

109.60'

116.16' CLO

88.88'

100.30'

68.84'

251.45'

182.61'

113.97'

384' PLAT
N 268.80' (CALC)

113.97'

574°23'W 998.55'(CALC)

N74°24'22"E 109.16'

100
2.96 AC

962.20'

EAST 404.50' (CALC)

EAST 557.70' (CALC)

1600
0.68 AC

1700
1.49 AC

200
29.67 AC

1500
0.83 AC

1600
0.68 AC

1700
1.49 AC

3