

THIS MAP WAS PREPARED FOR ASSESSMENT PURPOSE ONLY.

NW1/4 SE1/4 SEC.19 T.27S. R.5W. W.M.
DOUGLAS COUNTY

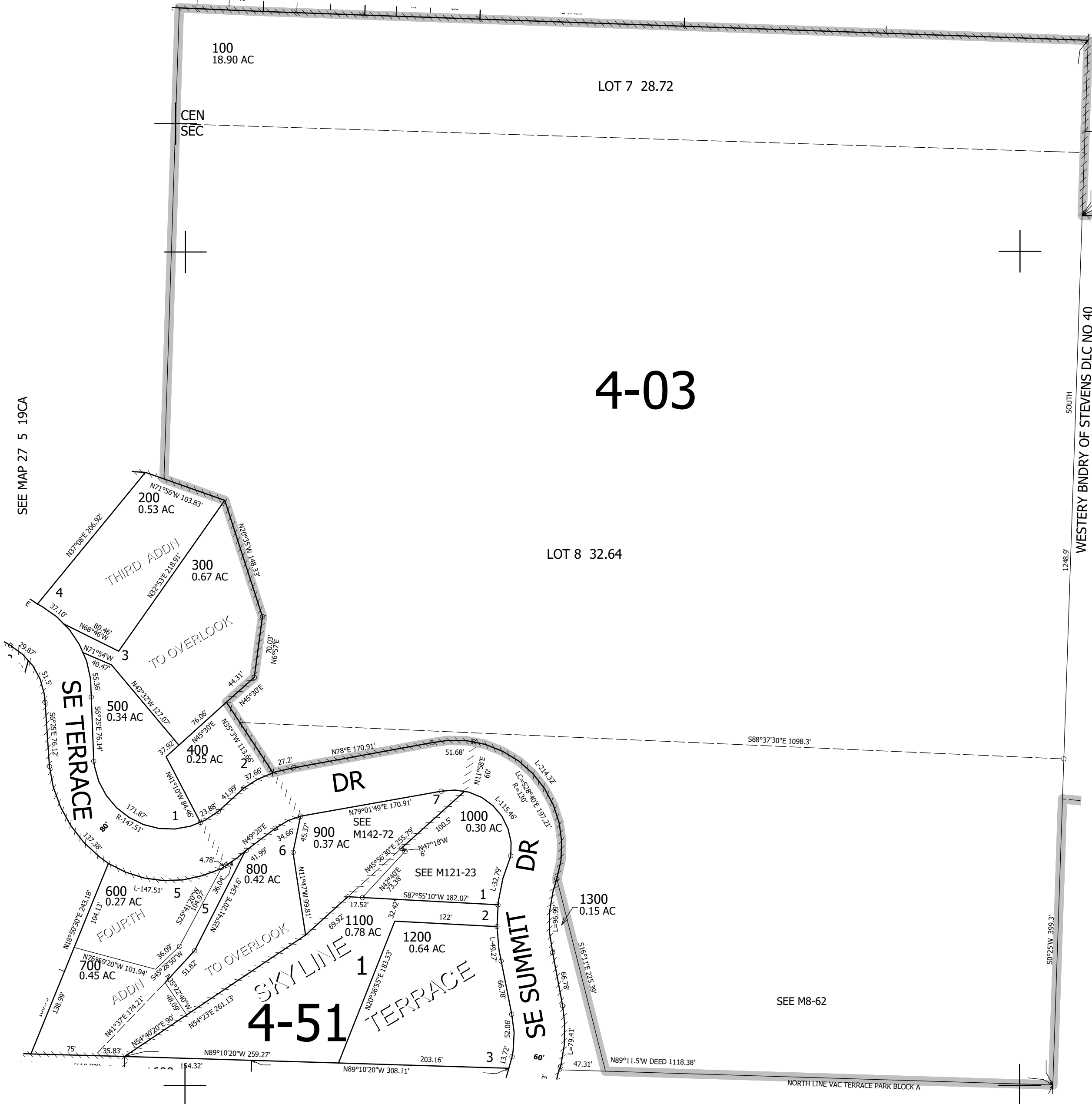
1" = 100'

REVISED ON
12-30-19

27 5 19DB
ROSEBURG

SEE MAP 27 5 19AC

CANCELLED NO'S
1001



1/16
COR

SEE MAP 27 5 19CA

SEE MAP 27 5 19DA

LOT 8 32.64

4-03

4-51

SEE M8-62

573,000

SEE MAP 27 5 19DC

1/16
COR

4,166,500

1/16
COR
27 5 19DB
ROSEBURG