

THIS MAP WAS PREPARED FOR ASSESSMENT PURPOSE ONLY.

NE1/4 SE1/4 SEC.19 T.27S. R.5W. W.M. DOUGLAS COUNTY

1" = 100'

REVISED ON 4-21-16

27 5 19DA ROSEBURG

SEE MAP 27 5 19AD

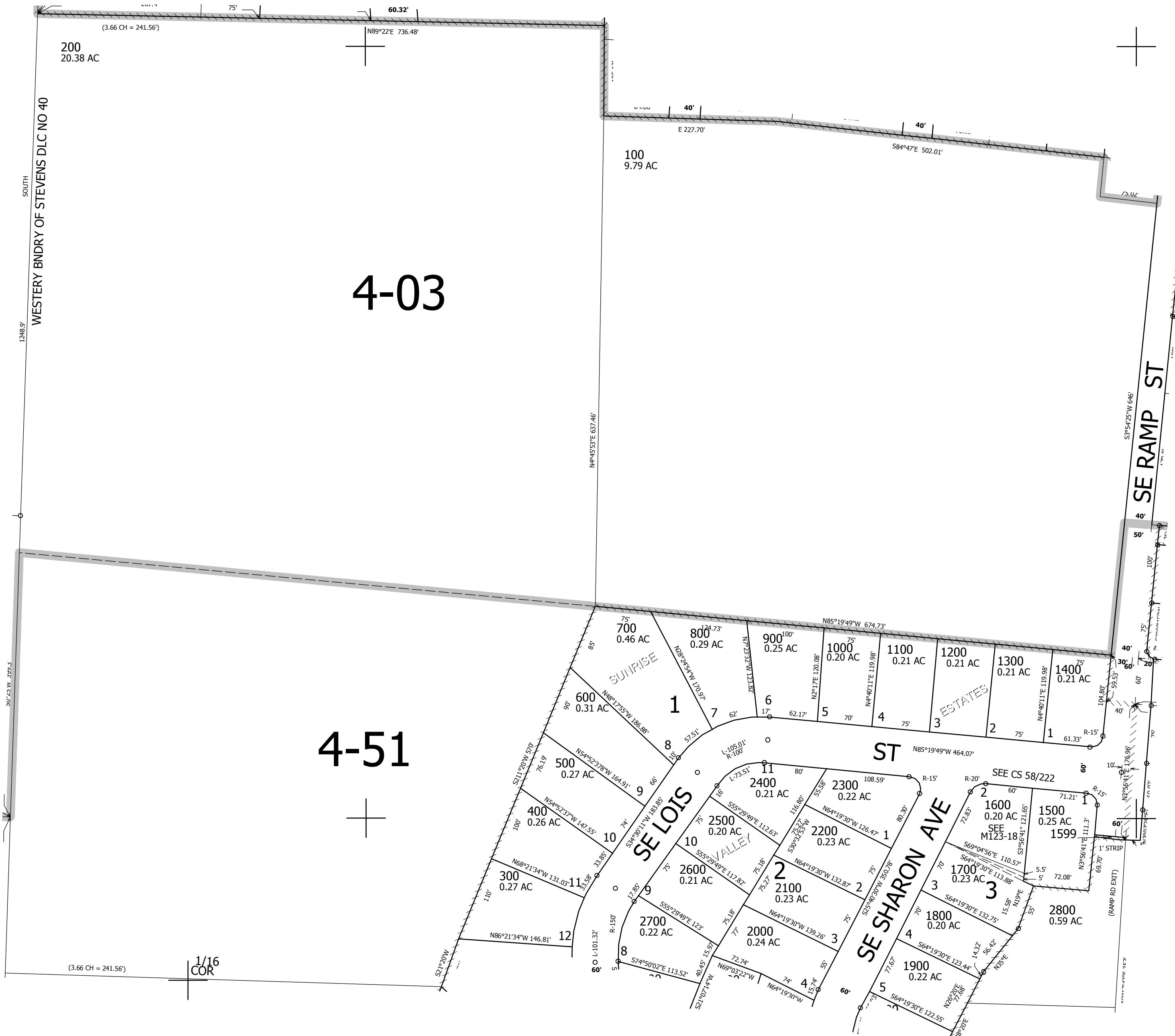
CANCELLED NO'S 1601 101

1/16 COR

1/4 COR

SEE MAP 27 5 19DB

SEE MAP 27 5 20CB



4-03

4-51

SEE MAP 27 5 19DD

573,000

1/16 COR

4,168,000 27 5 19DA ROSEBURG