



THIS MAP WAS PREPARED FOR  
ASSESSMENT PURPOSE ONLY.

Upper Left:  
123°20'52"W 43°12'23"N  
4162222E 574097N ft

# SUPPLEMENTAL NW1/4 SW1/4 SEC.19 T.27S. R.05W. W.M. DOUGLAS COUNTY

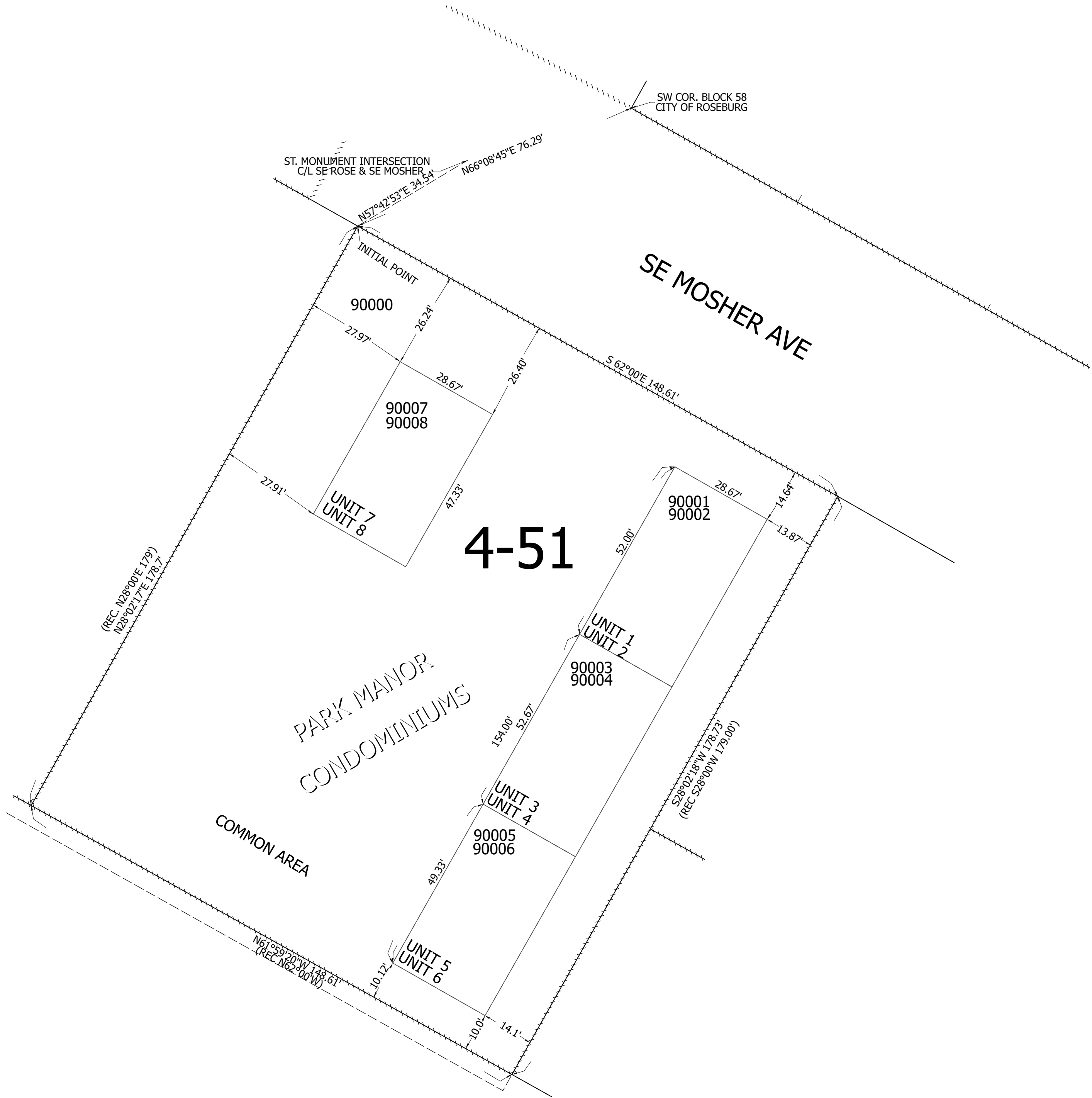
1" = 20'

Date Exported 2026-03-23

270519CBSUPP  
Roseburg

CANCELLED NOS:

SEE MAP  
2706W24DA



SEE MAP  
2705W19CB

Lower Right:  
123°20'46"W 43°12'20"N  
4162614E 573749N ft

270519CBSUPP  
Roseburg