

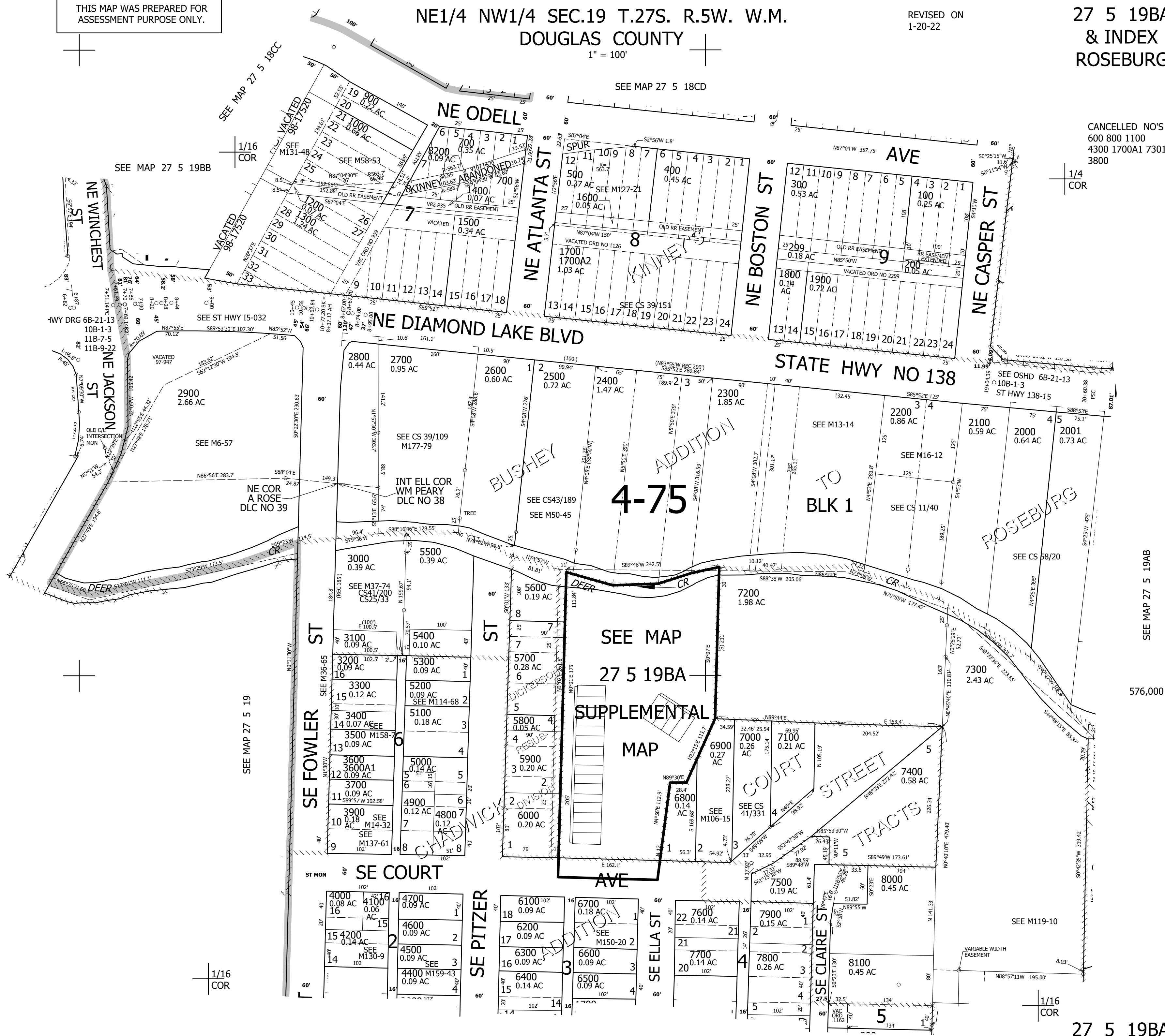
THIS MAP WAS PREPARED FOR ASSESSMENT PURPOSE ONLY.

NE1/4 NW1/4 SEC.19 T.27S. R.5W. W.M.  
DOUGLAS COUNTY  
1" = 100'

REVISED ON  
1-20-22

27 5 19BA  
& INDEX  
ROSEBURG

CANCELLED NO'S  
600 800 1100  
4300 1700A1 7301  
3800



SEE MAP 27 5 19AB

576,000

27 5 19BA  
& INDEX  
ROSEBURG

SEE MAP 27 5 19BD

4,165,000

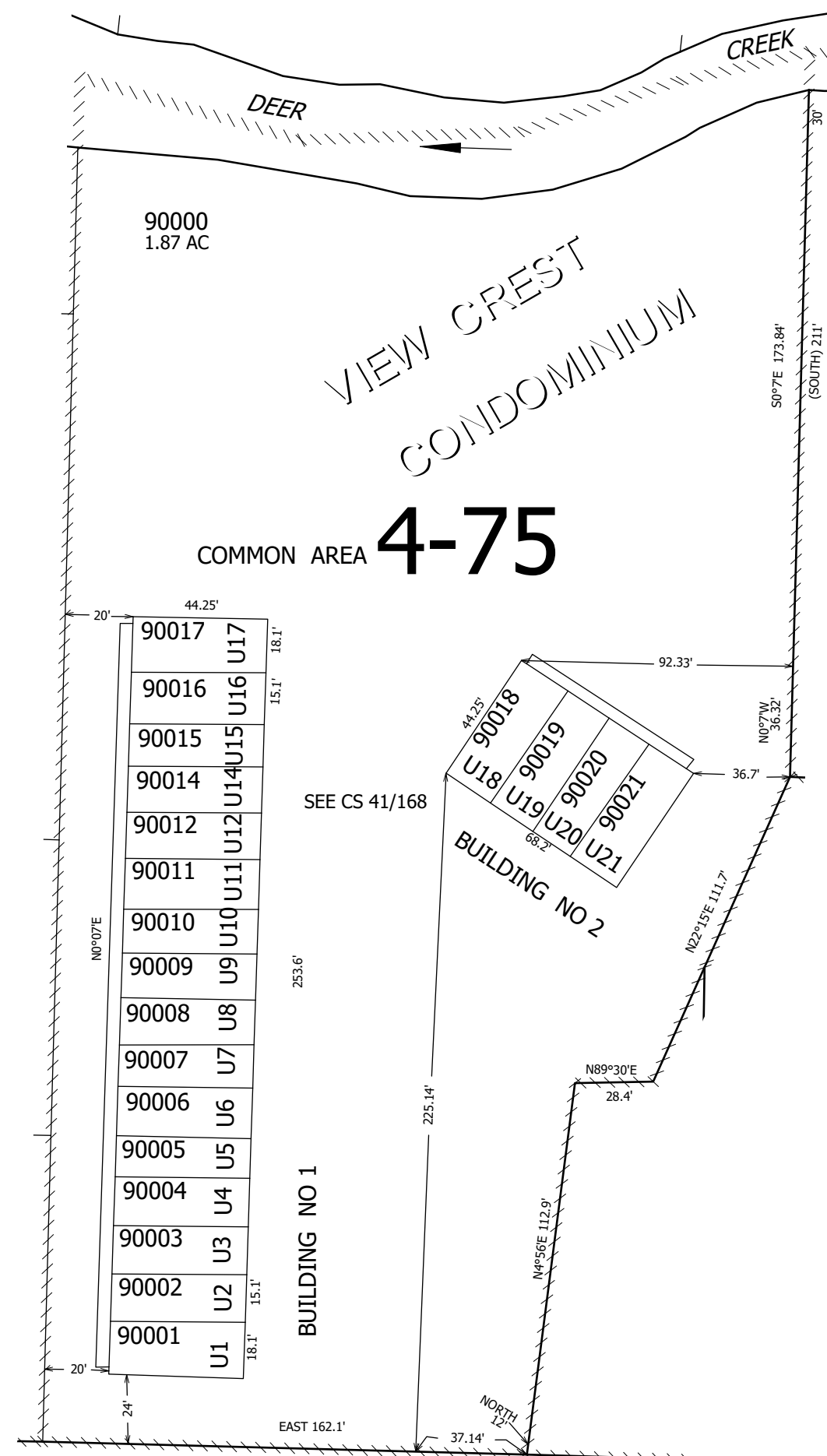
THIS MAP WAS PREPARED FOR ASSESSMENT PURPOSE ONLY.

NE1/4 NW1/4 SEC.19 T.27S. R.5W. W.M.  
SUPPLEMENTAL  
DOUGLAS COUNTY  
1" = 50'

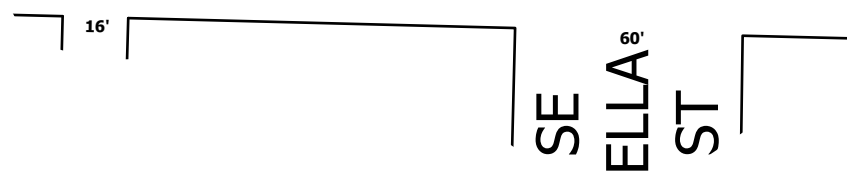
REVISED ON  
3-20-19

27 5 19BA  
SUPPLEMENTAL  
ROSEBURG

CANCELLED NO'S



60' SE COURT AVE 60'



27 5 19BA  
SUPPLEMENTAL  
ROSEBURG