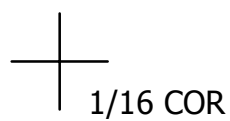


THIS MAP WAS PREPARED FOR ASSESSMENT PURPOSE ONLY.

SE1/4 NE1/4 SEC.19 T.27S. R.5W. W.M. DOUGLAS COUNTY

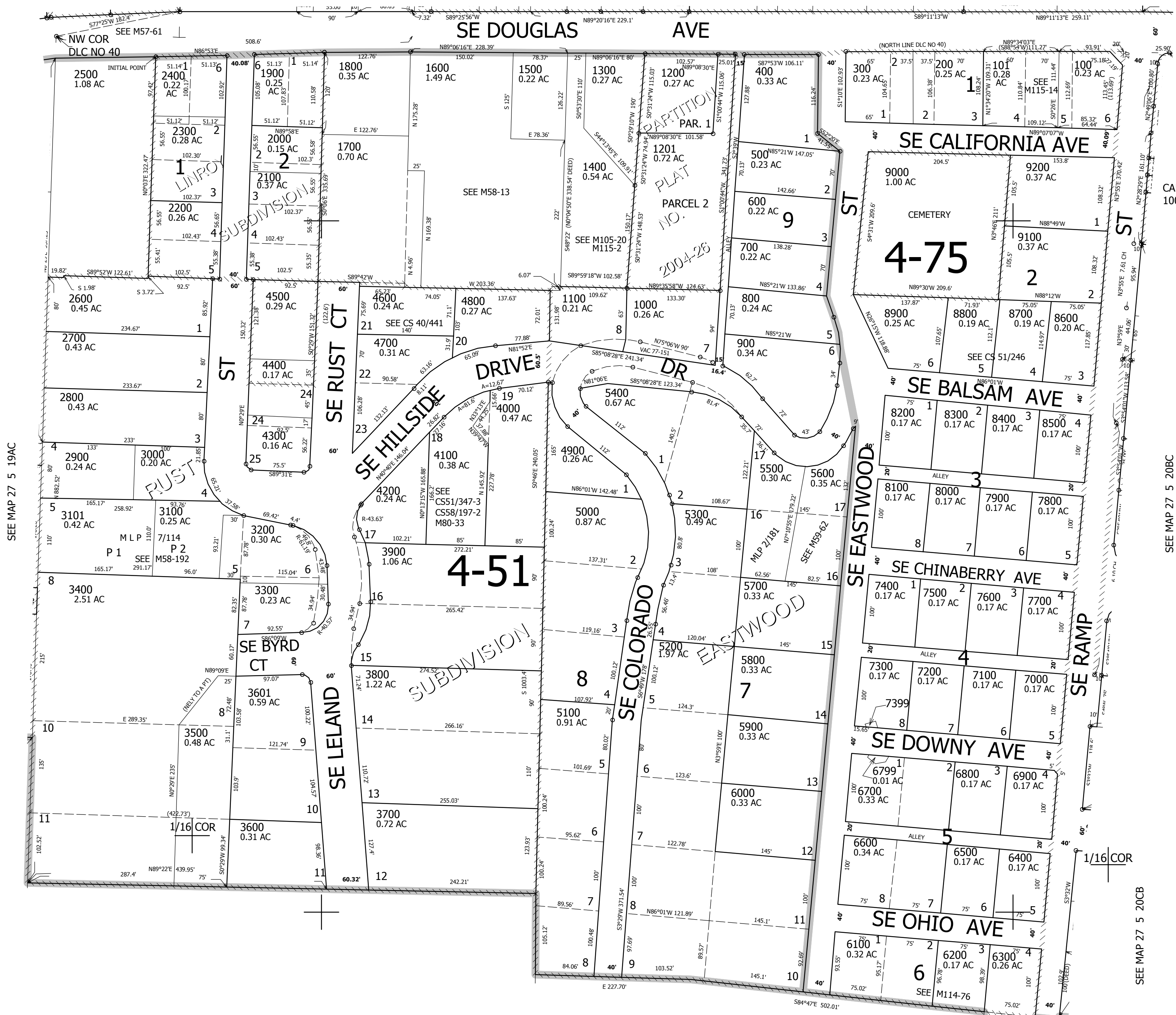
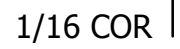
REVISED ON 3-20-19

27 5 19AD ROSEBURG



1" = 100'

SEE MAP 27 5 19AA



SEE MAP 27 5 19AC

SEE MAP 27 5 20BC

CANCELLED NO'S 100M1 101M1 6701

SEE MAP 27 5 19DA

SEE MAP 27 5 20CB

574,000

27 5 19AD ROSEBURG

4,168,000