

THIS MAP WAS PREPARED FOR ASSESSMENT PURPOSE ONLY.

Upper Left:  
123°20'12"W 43°12'52"N  
4165237E 576922N ft

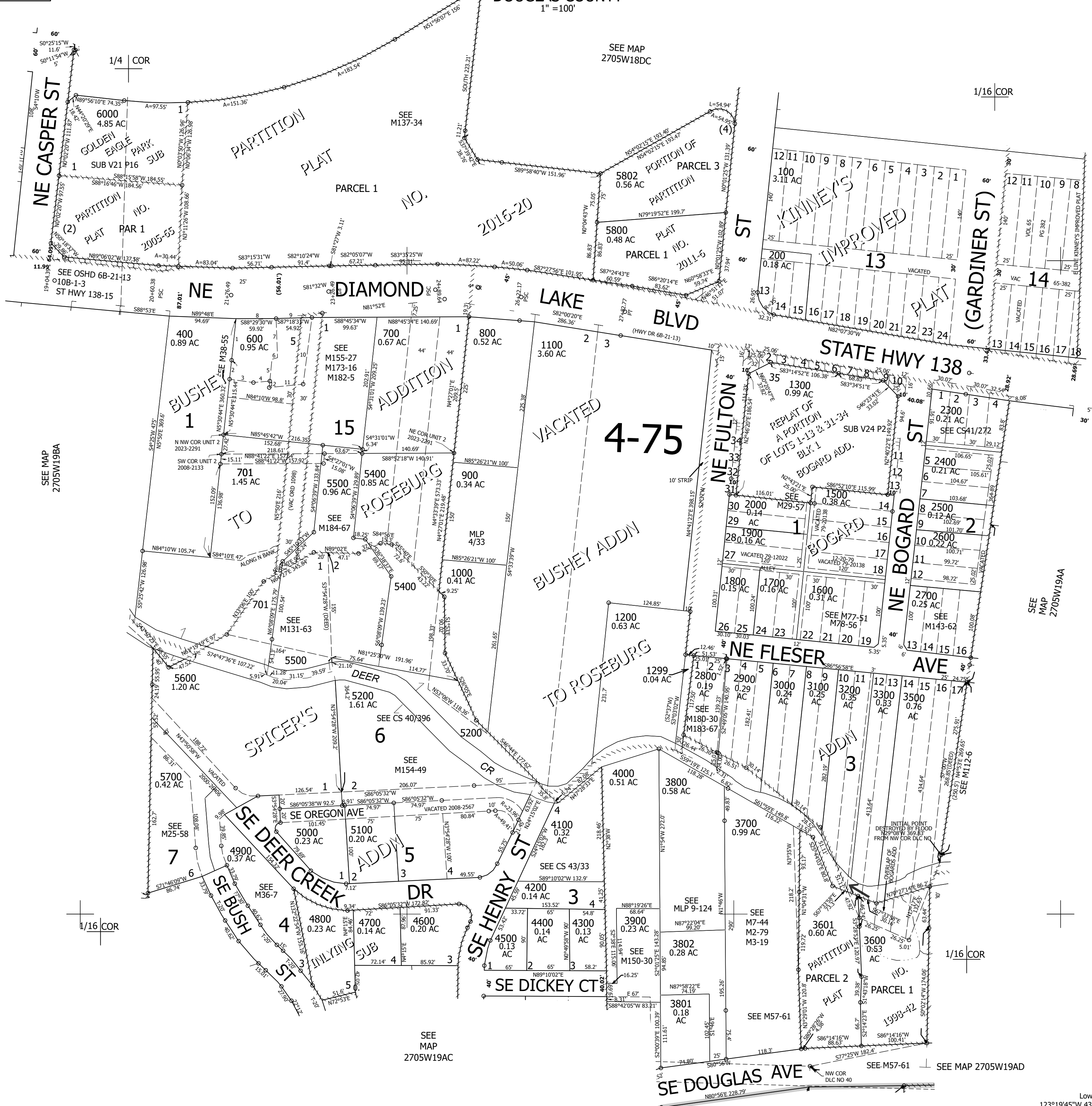
NW1/4 NE1/4 SEC.19 T.27S. R.05W. W.M.  
DOUGLAS COUNTY  
1" = 100'

Date Exported 2025-04-03

270519AB  
Roseburg

- PARCEL 600
1. N5°50'E 65.41'
  2. N5°50'E 29.57'
  3. N84°10'W 39.07'
  4. S82°05'W 23'
  5. S5°50'W 33.77'
  6. N87°03'30"E 7.32'
  7. N2°56'30"W 63'
  8. S88°31'30"W 59.48'
  9. S87°25'W 54.95'
  10. S5°50'W 102.54'
  11. S82°05'W 53.44'
  12. S5°50'W 10'

- CANCELLED NOS:
- 5601 300 3901
  - 702 500 5801
  - 5900 5901 5902
  - 6002 703 3400
  - 1400 2100 2200
  - 5300 601 6100
  - 6001 2901 704
  - 705 5401 5501



SEE MAP 2705W19BA

SEE MAP 2705W19AC

SEE MAP 2705W19AD

SEE MAP 2705W19AA

270519AB  
Roseburg

Lower Right:  
123°19'45"W 43°12'36"N  
4167214E 575202N ft