

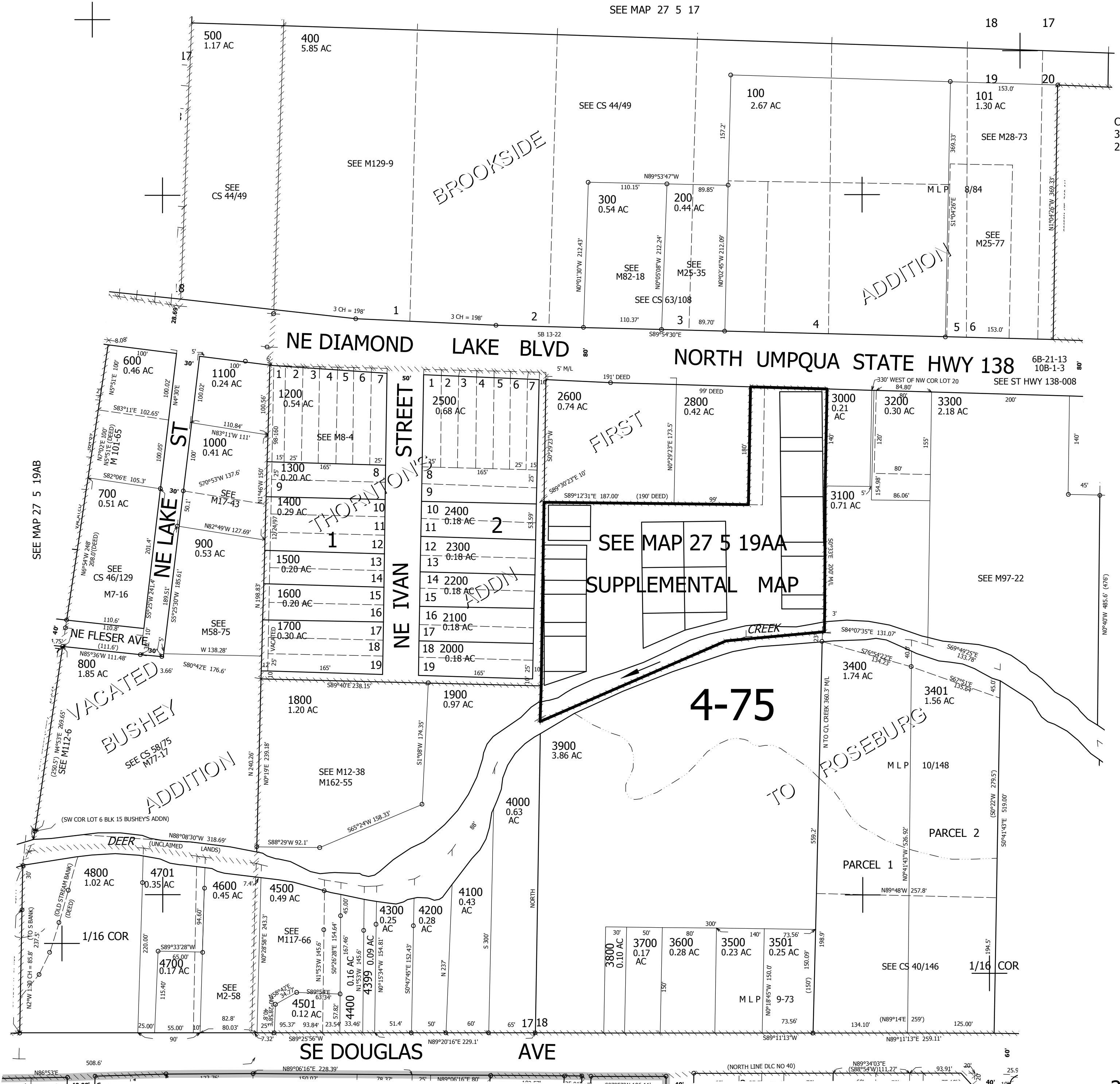
THIS MAP WAS PREPARED FOR ASSESSMENT PURPOSE ONLY.

NE1/4 NE1/4 SEC.19 T.27S. R.5W. W.M.  
DOUGLAS COUNTY  
1" = 200'

REVISED ON  
3-20-19

27 5 19AA  
ROSEBURG

SEE MAP 27 5 17



CANCELLED NO'S  
3101 102 4401  
2700 2900 100A1

SEE MAP 27 5 20BB

575,500

SEE MAP 27 5 19AB

SEE MAP 27 5 19AD

4,158,000

27 5 19AA  
ROSEBURG

THIS MAP WAS PREPARED FOR ASSESSMENT PURPOSE ONLY.

NE1/4 NE1/4 SEC.19 T.27S. R.5W. W.M.  
SUPPLEMENTAL  
DOUGLAS COUNTY

1" = 50'

REVISED ON  
3-20-19

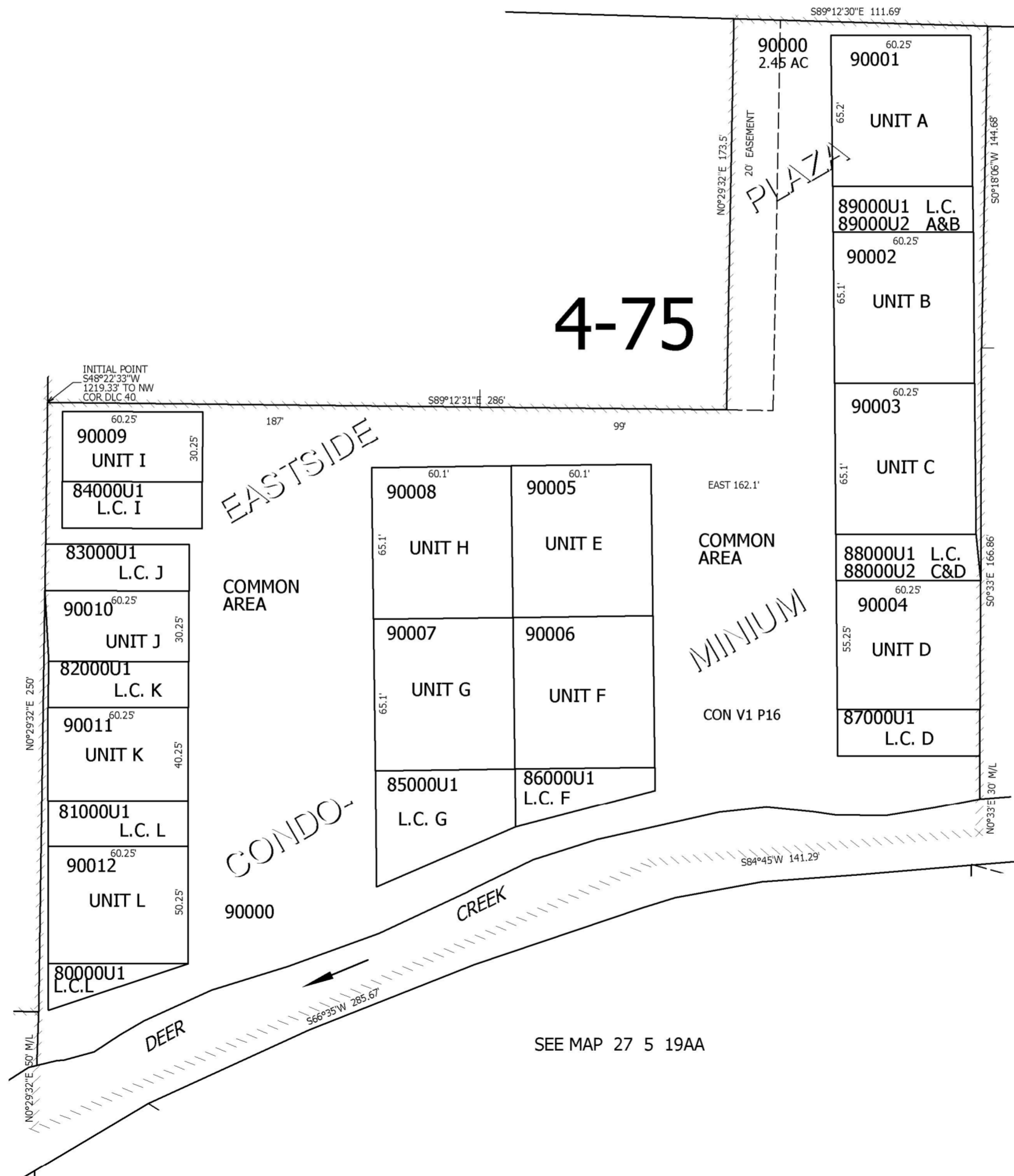
27 5 19AA  
SUPPLEMENTAL  
ROSEBURG

CANCELLED NO'S

SEE MAP 27 5 19AA

NE DIAMOND LAKE BLVD  
NORTH UMPQUA STATE HWY NO. 138

SEE MAP 27 5 19AA



SEE MAP 27 5 19AA

SEE MAP 27 5 19AA

27 5 19AA  
SUPPLEMENTAL  
ROSEBURG