

THIS MAP WAS PREPARED FOR ASSESSMENT PURPOSE ONLY.

Upper Left:
123°20'52"W 43°13'20"N
4162408E 579771N ft

NW1/4 SW1/4 SEC.18 T.27S. R.05W. W.M.
DOUGLAS COUNTY

Date Exported 2023-11-29

270518CB
Roseburg

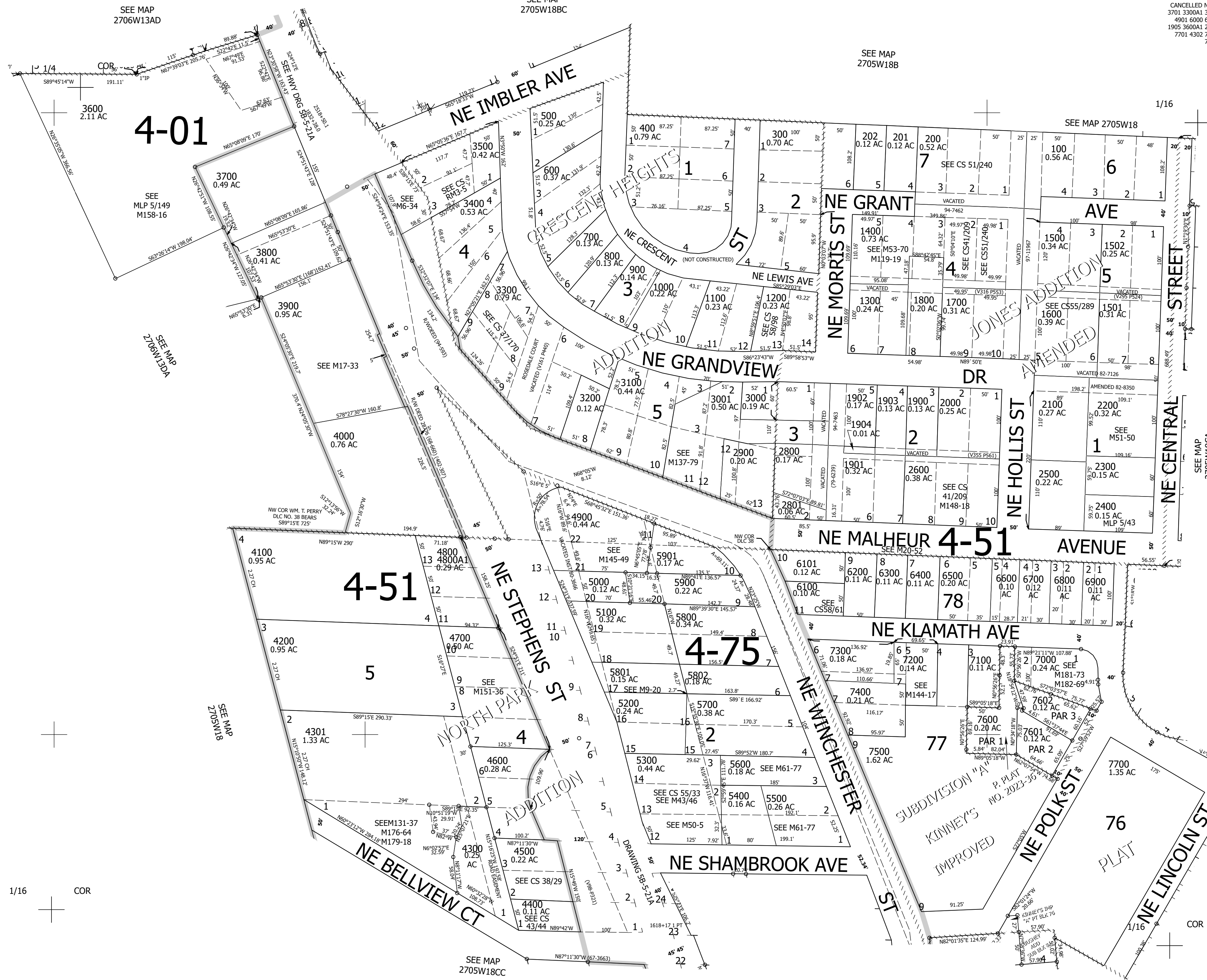
SEE MAP
2705W18BC

1" = 100'

CANCELLED NOS:
3701 3300A1 3601
4901 6000 6001
1905 3600A1 2700
7701 4302 7001
7002

SEE MAP
2706W13AD

SEE MAP
2705W18B



1/16 COR

1/16 COR

270518CB
Roseburg

Lower Right:
123°20'24"W 43°13'3"N
4164370E 577992N ft

SEE MAP
2705W18CD