

THIS MAP WAS PREPARED FOR ASSESSMENT PURPOSE ONLY.

SE1/4 NW1/4 SEC.18 T.27S. R.5W. W.M.
DOUGLAS COUNTY
1" = 100'

REVISED ON
12-17-13

27 5 18BD
& INDEX
ROSEBURG

SEE MAP 27 5 18BB

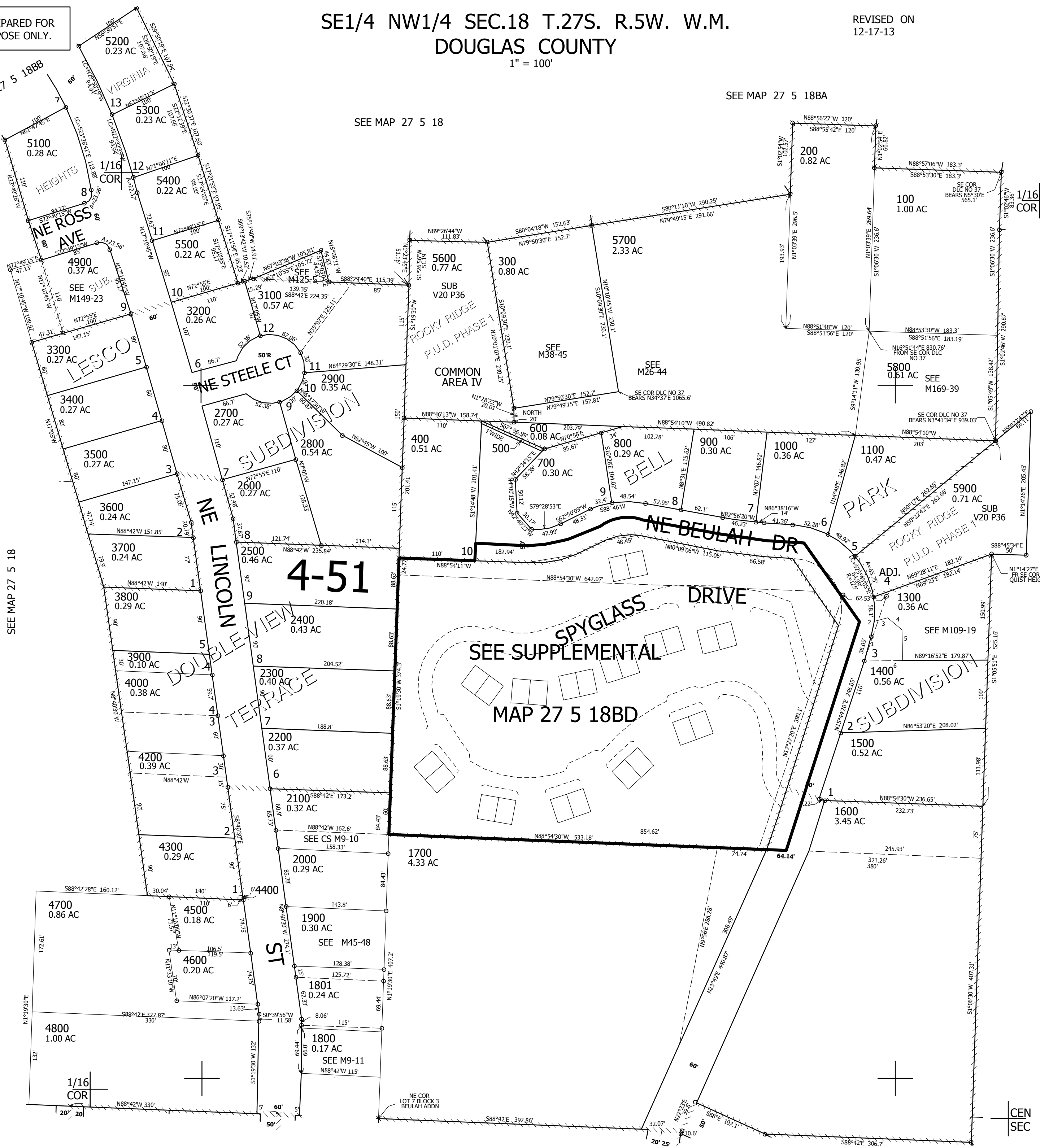
SEE MAP 27 5 18BA

SEE MAP 27 5 18

SEE MAP 27 5 18

SEE MAP 27 5 18AC

SEE MAP 27 5 18CA



CANCELLED NO'S
3000 5000 4100
1301

- PARCEL 1400
1. N14°08'50"E 37.76'
 2. LC=N4°45'44"E 23.91'
 3. N72°21'54"E 21.47'
 4. S51°10'29"E 28.07'
 5. S1°43'10"E 47.72'
 6. S88°16'52"W 55'

579,500

27 5 18BD
& INDEX
ROSEBURG

4,165,500

CEN
SEC

