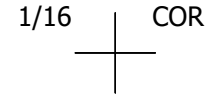


THIS MAP WAS PREPARED FOR ASSESSMENT PURPOSE ONLY.

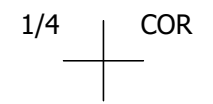
Upper Left:
123°20'31"W 43°13'44"N
4164004E 582176N ft



NE1/4 NW1/4 SEC.18 T.27S. R.05W. W.M.
DOUGLAS COUNTY
1" = 100'

Date Exported 2024-04-10

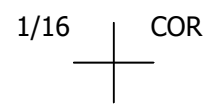
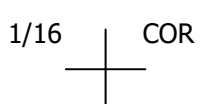
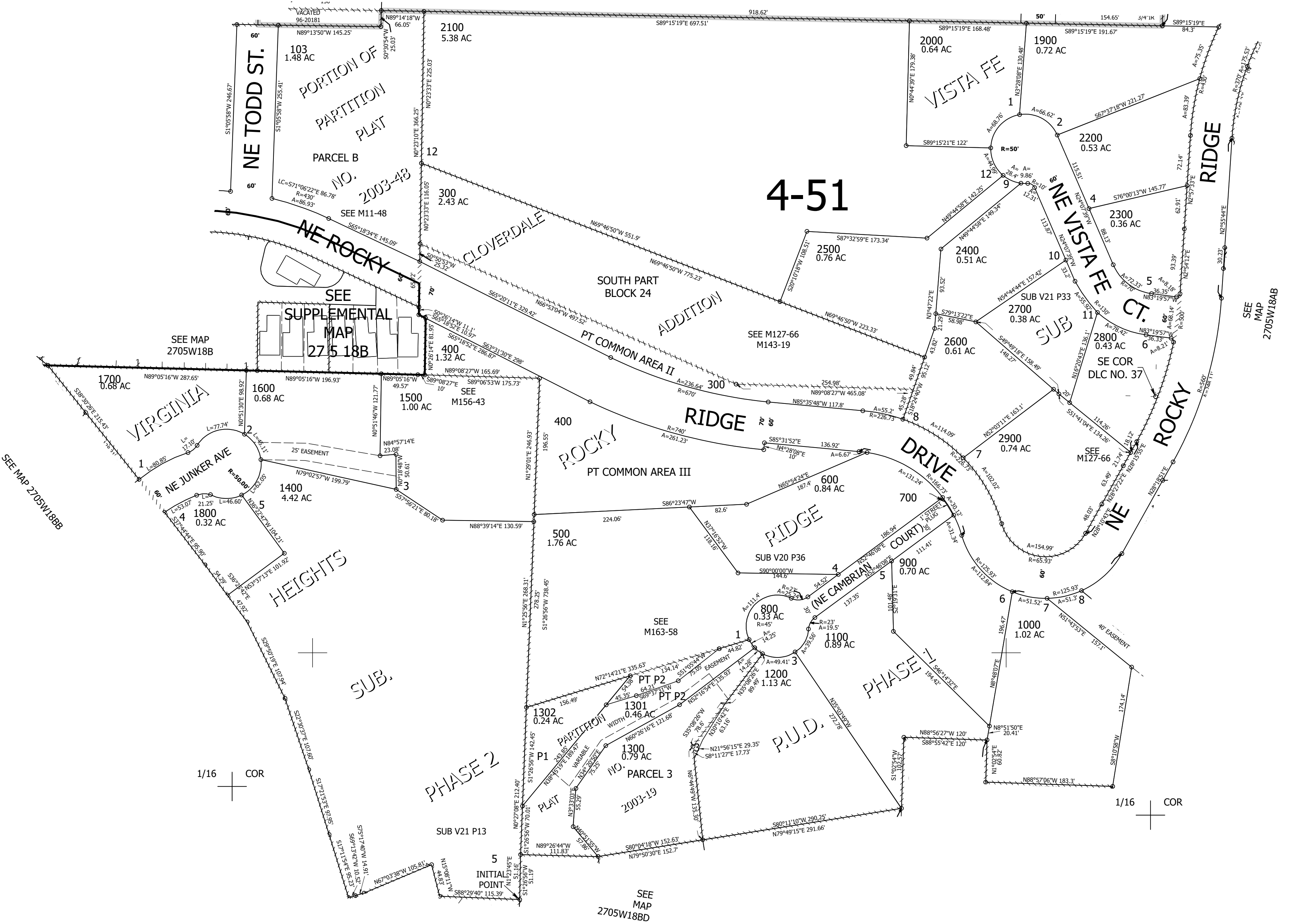
270518BA
Roseburg



CANCELLED NOS:
104 105 102
100 107 108
200 201 202
301 302 101
401 1303 1201

SEE MAP
2705W07CD

4-51



SEE MAP
2705W18BD

SEE MAP
2705W18AB

270518BA
Roseburg

Lower Right:
123°20'4"W 43°13'27"N
4165966E 580396N ft