

THIS MAP WAS PREPARED FOR ASSESSMENT PURPOSE ONLY.

NW1/4 NE1/4 SEC.18 T.27S. R.5W. W.M.
DOUGLAS COUNTY
1" = 100'

REVISED ON
4-5-16

27 5 18AB
ROSEBURG

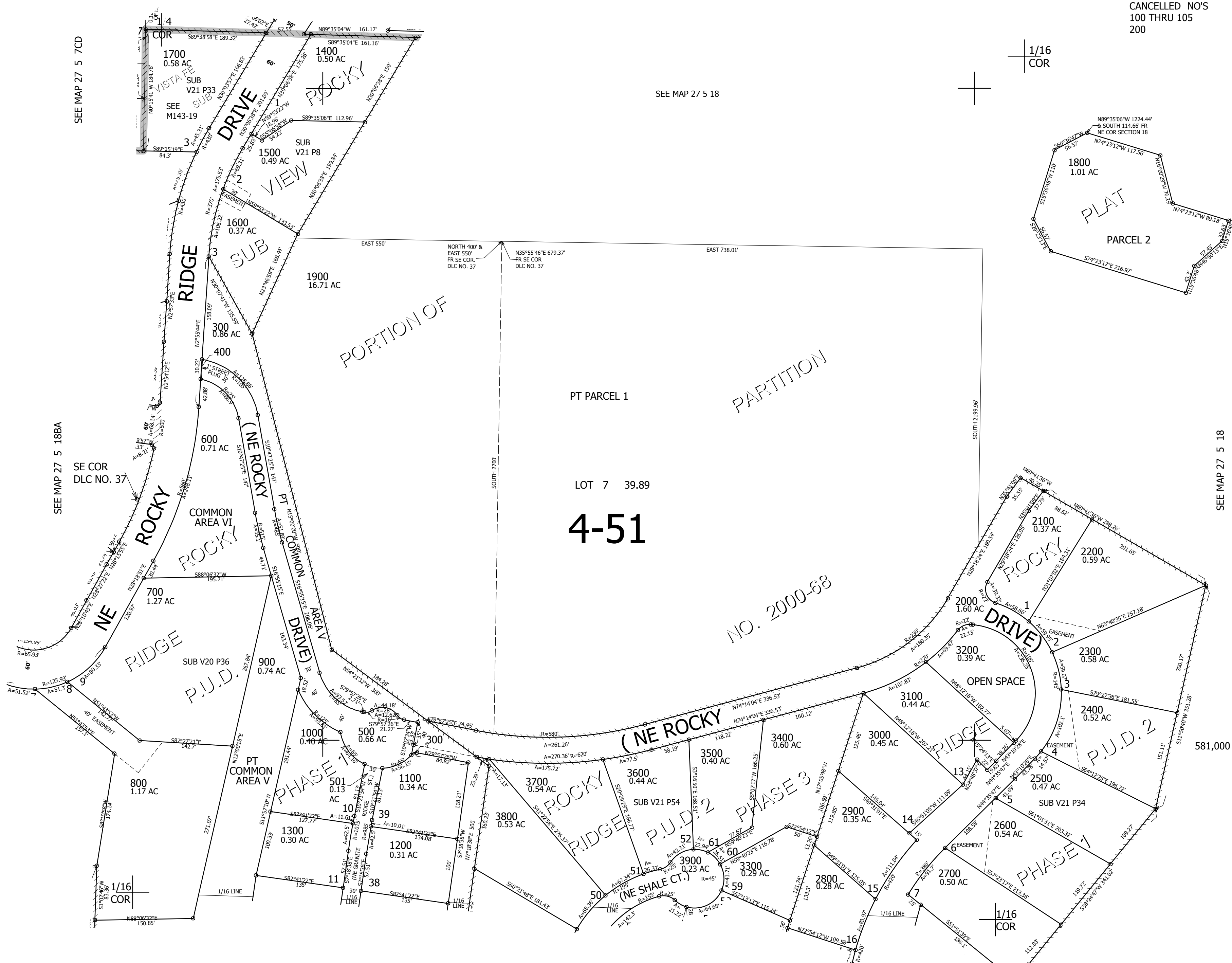
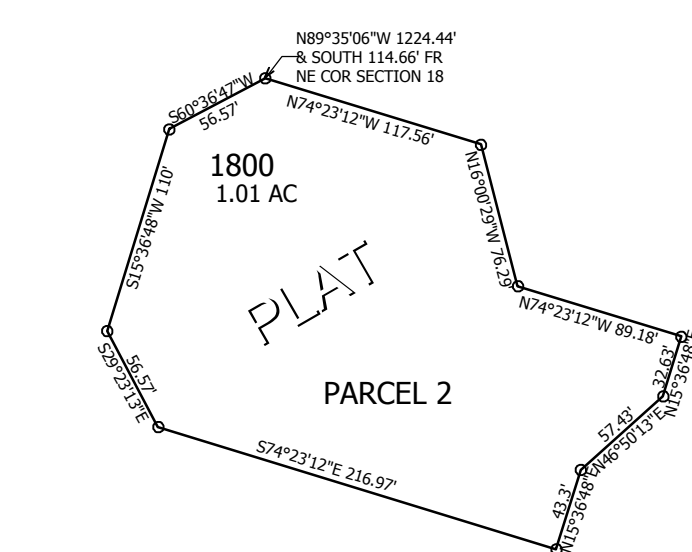
SEE MAP 27 5 7

SEE MAP 27 5 7DC

SEE MAP 27 5 18

CANCELLED NO'S
100 THRU 105
200

1/16
COR



LOT 7 39.89
4-51

NO. 2000-68

SEE MAP 27 5 18

581,000

SEE MAP 27 5 18AC

4,167,000

27 5 18AB
ROSEBURG