

THIS MAP WAS PREPARED FOR ASSESSMENT PURPOSE ONLY.

SEC.18 T.27S. R.5W. W.M.  
DOUGLAS COUNTY

1" = 400'

REVISED ON  
12-26-19

27 5 18  
& INDEX  
ROSEBURG

12 7

SEE MAP 27 5 7CC

SEE MAP 27 5 7CD

SEE MAP 27 5 7DC

SEE MAP 27 5 7

7

8

13

18

18

17

SEE MAP 27 6 13AA

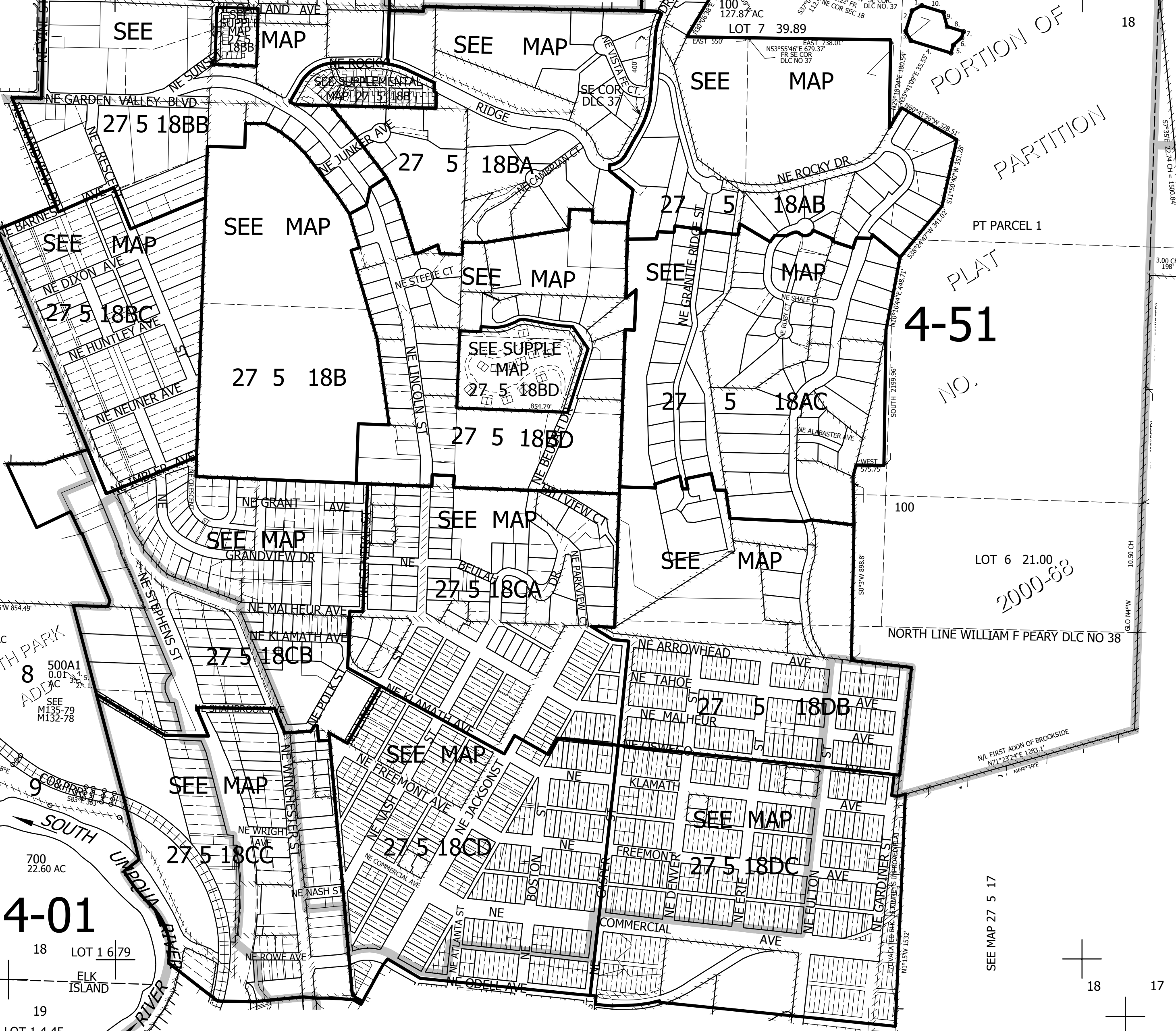
SEE MAP 27 6 13AD

SEE MAP 27 6 13

SEE MAP 27 5 17

SEE MAP 27 5 17

SEE MAP 27 5 19AA



4-00

4-02

4-51

2000-88

4-01

SEE MAP 27 5 19BB

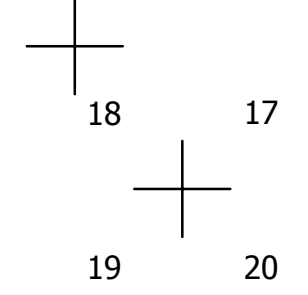
SEE MAP 27 5 19BA

SEE MAP 27 5 19AB

- PARCEL 500A1
1. P.O.B. BEARS N56°00'21"W 526.54' FR NW COR BLOCK 3 NORTH PARK ADDITION
  2. S82°26'12"W 20'
  3. N7°33'48"W 15'
  4. N82°26'12"E 20'
  5. S7°33'48"E 15'

- CANCELLED NO'S
- 402 800 800M1
  - 302 303 300
  - 301 401
  - 101 THRU 122
  - 200 THRU 206
  - 400

- PP 2000-68
1. S60°36'47"W 56.57'
  2. S15°36'48"W 110'
  3. S29°23'13"E 56.57'
  4. S74°23'12"E 216.97'
  5. N15°36'48"E 43.3'
  6. N46°50'13"E 57.43'
  7. N15°36'48"E 32.63'
  8. N74°23'12"W 89.18'
  9. N16°00'29"W 76.29'
  10. N74°23'12"W 117.56'



577,000

4,168,000

27 5 18  
& INDEX  
ROSEBURG