

THIS MAP WAS PREPARED FOR ASSESSMENT PURPOSE ONLY.

NW1/4 SE1/4 SEC.17 T.27S. R.5W. W.M.  
DOUGLAS COUNTY

REVISED ON  
3-22-17

27 5 17DB  
ROSEBURG

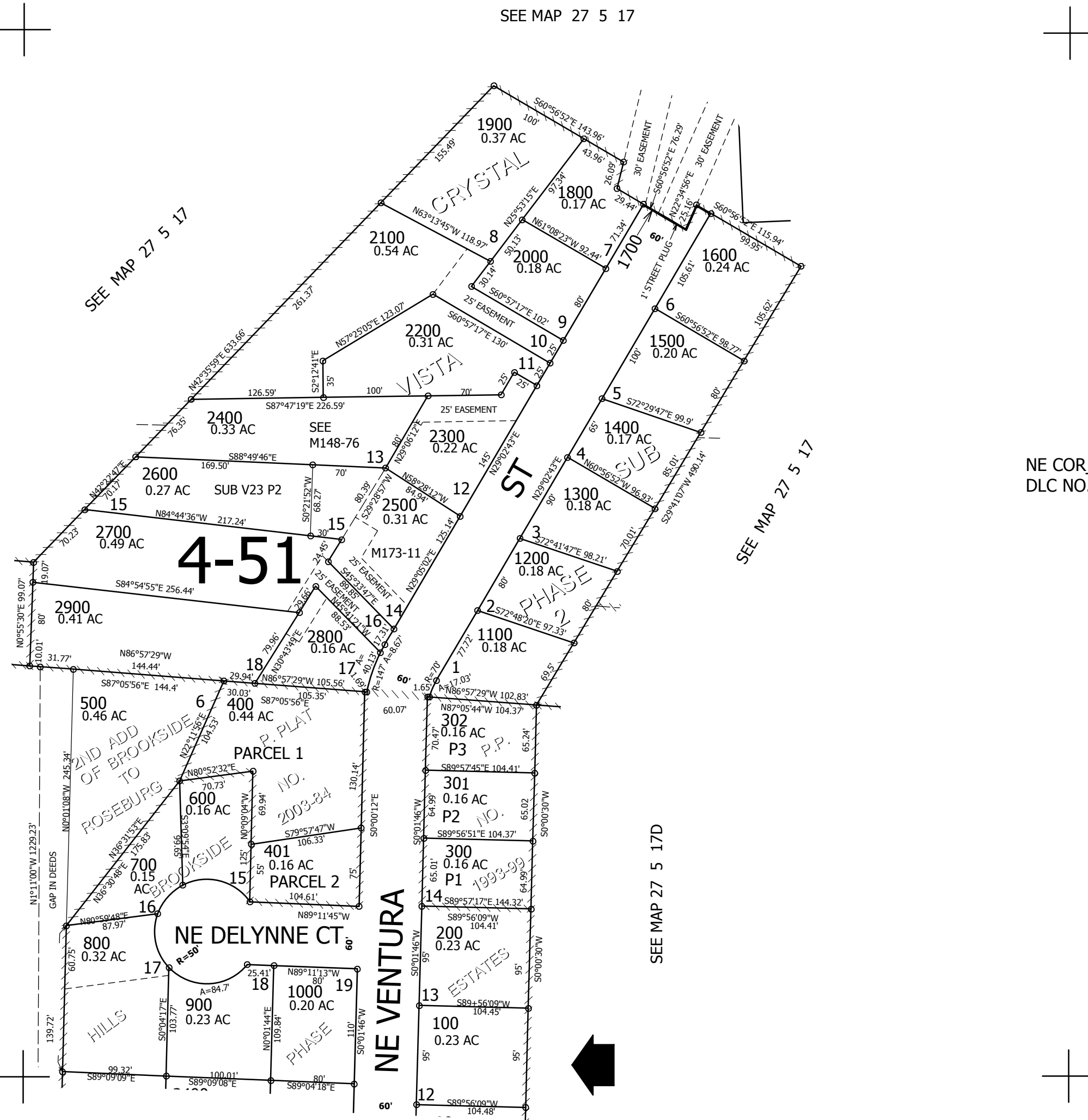
1" = 100'

CEN  
SEC

1/16  
COR

CANCELLED NO'S  
501 399 2601

SEE MAP 27 5 17



NE COR  
DLC NO. 38

SEE MAP 27 5 17D

SEE MAP 27 5 17D

578,000

1/16  
COR

SEE MAP 27 5 17DC

1/16  
COR

4,172,000

27 5 17DB  
ROSEBURG