

THIS MAP WAS PREPARED FOR ASSESSMENT PURPOSE ONLY.

SW1/4 SW1/4 SEC.17 T.27S. R.5W. W.M. DOUGLAS COUNTY

1" = 100'

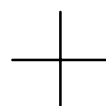
REVISED ON 3-19-19

SEE MAP 27 5 17CA

27 5 17CC ROSEBURG

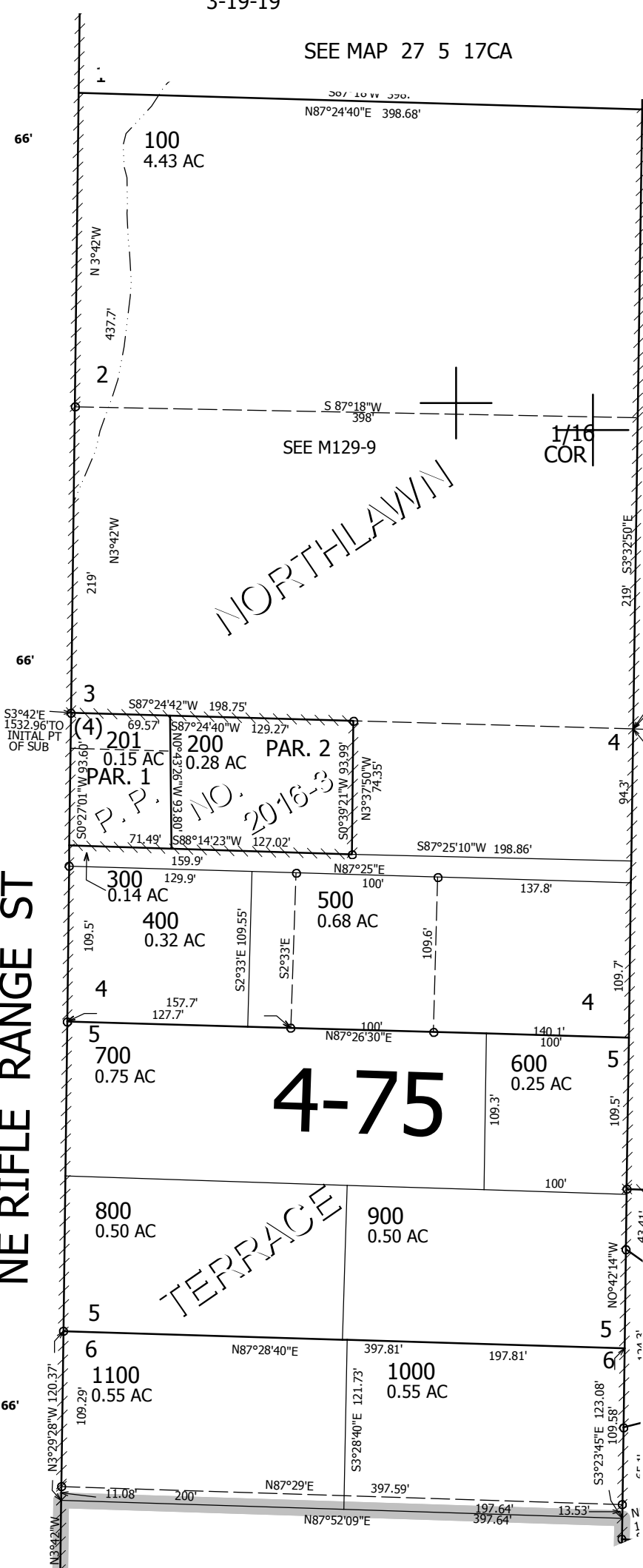
CANCELLED NO'S

1/16 COR



SEE MAP 27 5 17

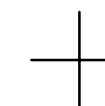
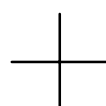
NE RIFLE RANGE ST



SEE MAP 27 5 17CD

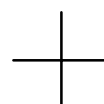
4-75

SEE MAP 27 5 17



577,000

18 17  
19 20



4,169,500

1/16 COR

27 5 17CC ROSEBURG