

THIS MAP WAS PREPARED FOR ASSESSMENT PURPOSE ONLY.

Upper Left:  
123°19'22"W 43°13'18"N  
4169063E 579375N ft

NE1/4 SW1/4 SEC.17 T.27S. R.05W. W.M.  
DOUGLAS COUNTY

1" = 100'

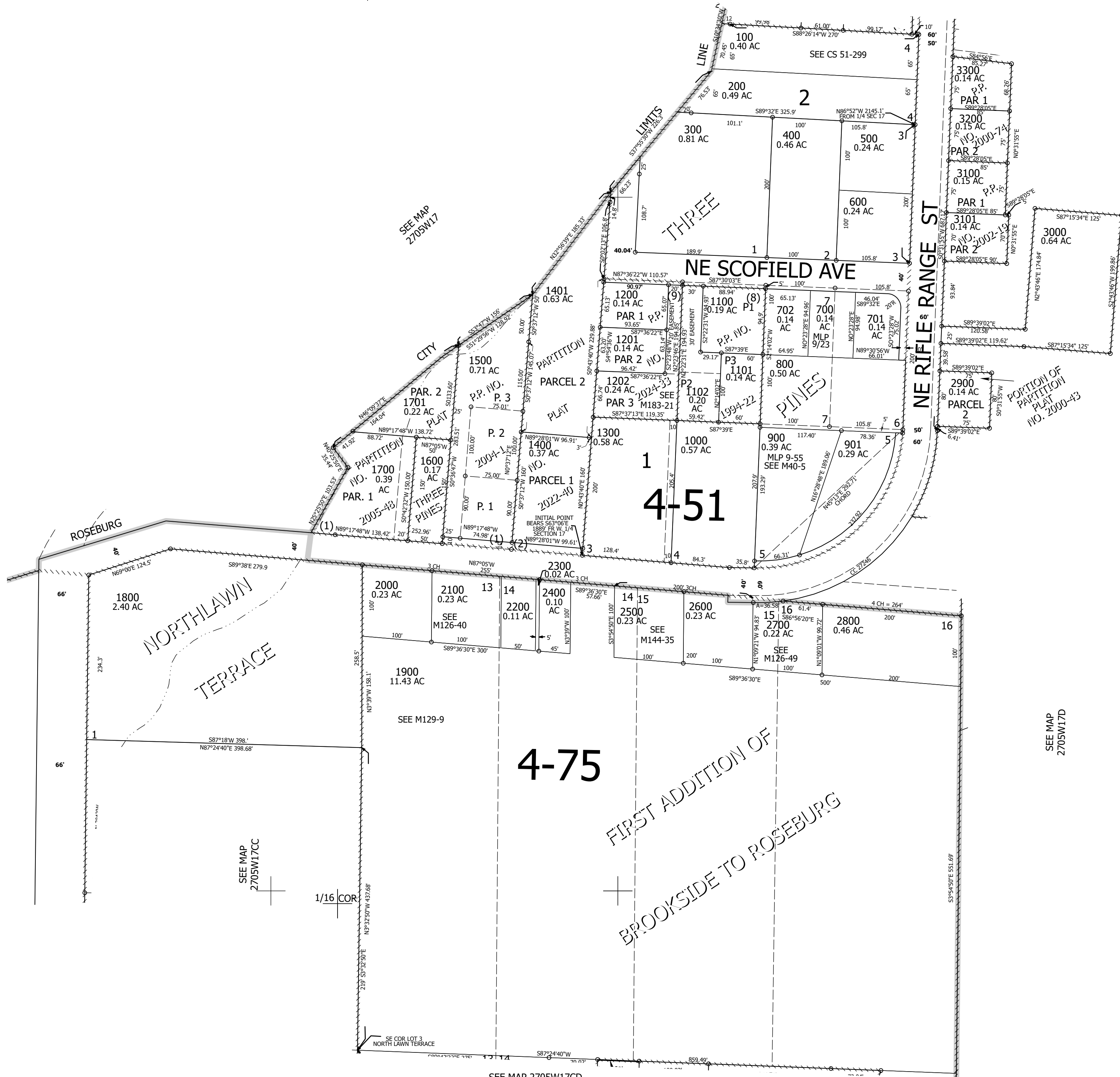
Date Expoted 2024-12-10

270517CA  
Roseburg

CANCELLED NOS:  
1501 1502

SEE  
MAP 2705W17BD

1/16 COR



SEE MAP  
2705W17

SEE MAP  
2705W17D

SEE MAP  
2705W17CC

SEE MAP 2705W17CD

1/16 COR

270517CA  
Roseburg

Lower Right:  
123°18'54"W 43°13'11"N  
4171038E 577636N ft