

THIS MAP WAS PREPARED FOR ASSESSMENT PURPOSE ONLY.

Upper Left:
123°19'17"W 43°13'31"N
4169476E 580661N ft

SE1/4 NW1/4 SEC.17 T.27S. R.05W. W.M.
DOUGLAS COUNTY

1" = 100'

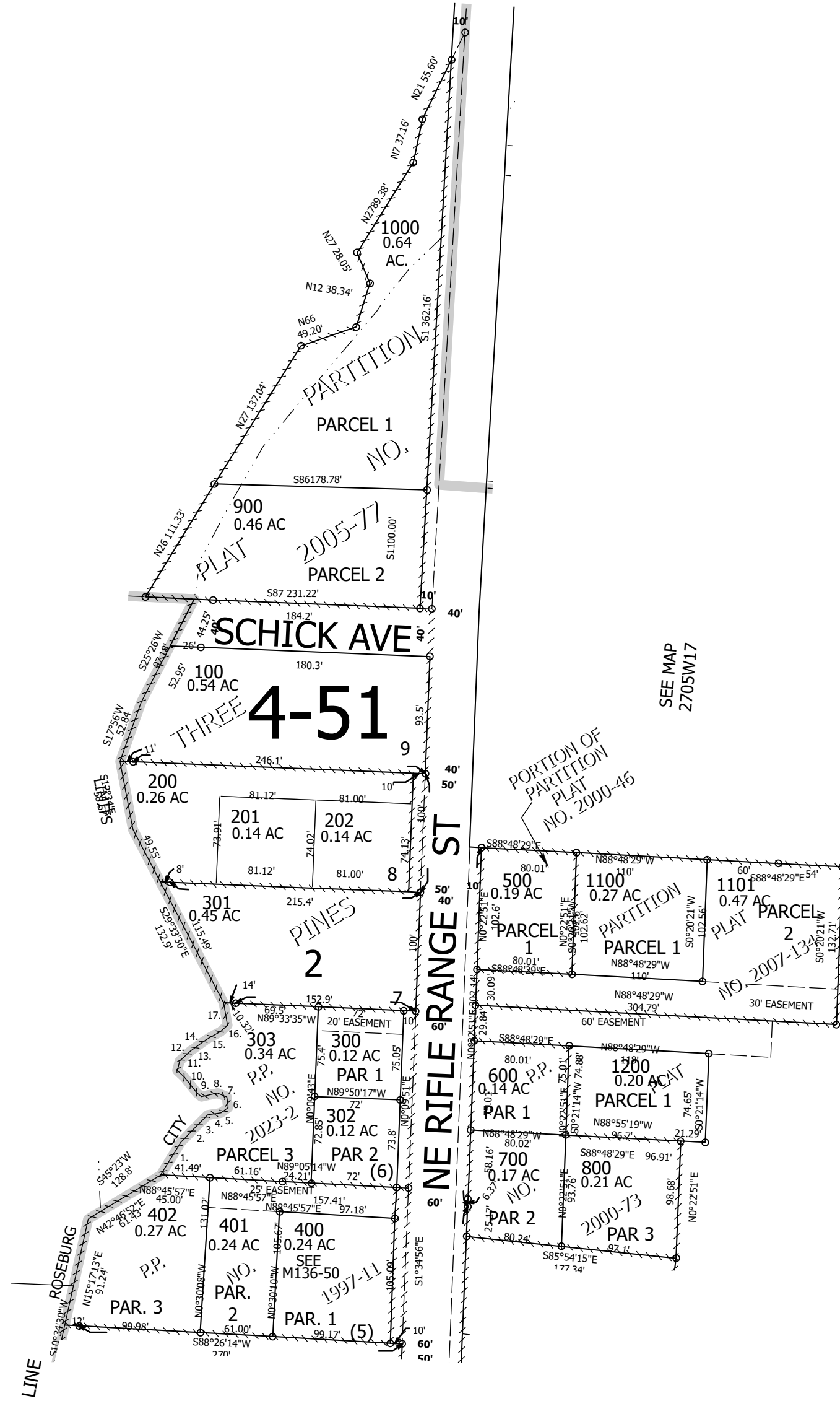
Date Exported: 1/24/2023 1:19 PM

2705W17BD
& Roseburg

CANCELLED NOS:

PP 2023-2

1. N29°44'10"E 32.37'
2. N41°54'56"E 14.31'
3. N42°23'55"E 17.87'
4. N79°49'10"E 11.19'
5. N51°23'37"E 7.53'
6. N9°36'48"W 9.23'
7. N70°32'33"W 8.33'
8. S75°57'31"W 13.68'
9. N54°18'27"W 5.21'
10. N40°54'36"W 16.62'
11. N47°33'36"W 8.2'
12. N11°35'36"E 8.29'
13. N45°06'16"E 12.03'
14. N51°50'59"E 16.26'
15. N58°44'04"E 14.2'
16. N45°52'16"E 7.91'
17. N12°06'04"W 19.44'



SEE MAP 2705W17

SEE MAP 2705W17CA

LIMITS

CEN SEC

Lower Right:
123°18'49"W 43°13'14"N
4171439E 578922N ft
2705W17BD
& Roseburg