

THIS MAP WAS PREPARED FOR ASSESSMENT PURPOSE ONLY.

Upper Left:
123°19'57"W 43°13'49"N
4166531E 582623N ft

SEC.17 T.27S. R.05W. W.M.
DOUGLAS COUNTY
1" = 400'

Date Exported 2026-04-01

270517
& INDEX
Roseburg

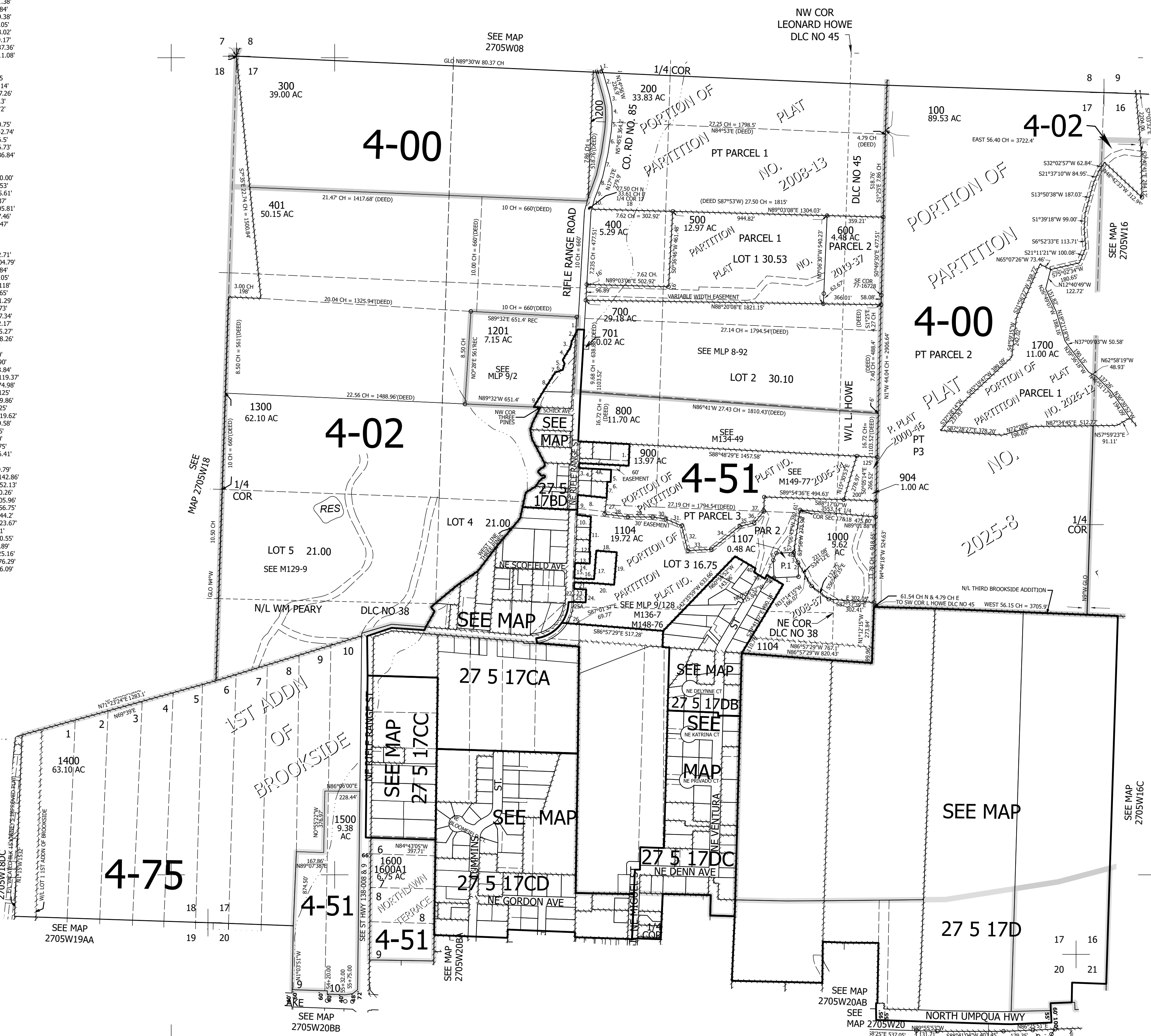
CANCELLED NOS:
1400A1 300M1 1100
901 902 1101
1102 1103 1200
1106 903 905
601 501 101

- PARCEL 1201
1. N1°26'31"W 74.41'
 2. S21°32'54"W 81.38'
 3. S7°22'40"W 36.84'
 4. S26°57'20"W 89.38'
 5. S26°16'41"E 28.05'
 6. S12°40'44"W 38.02'
 7. S66°28'21"W 49.17'
 8. S27°32'53"W 137.36'
 9. S26°27'42"W 111.08'

- PP 2008-13
C/L CO. RD. NO. 85
1. S17°34'50"E 77.14'
 2. S15°51'01"E 127.26'
 3. S12°02'25"E 68.3'
 4. S1°45'38"E 68.72'
 5. S3°57'55"W 76'
 6. S8°18'02"W 140.75'
 7. S12°52'01"W 142.74'
 8. S19°33'57"W 86.5'
 9. S20°53'31"W 56.73'
 10. S15°14'14"W 86.84'

- PARCEL 1107
1. N86°12'48"E 150.00'
 2. N3°47'12"W 87.53'
 3. N31°14'15"W 55.61'
 4. N7°06'43"E 13.37'
 5. S86°12'48"W 105.81'
 6. S22°34'56"W 47.46'
 7. S3°47'12"E 107.47'

- P. PLAT 2000-43
& 2006-34
1. S0°20'21"W 132.71'
 2. N88°48'29"W 304.79'
 3. S0°25'05"W 29.84'
 4. S88°49'45"E 80.05'
 - 4A. N88°48'29"W 118'
 5. S0°21'14"W 74.65'
 6. N88°48'29"W 21.29'
 7. S0°20'42"W 98.73'
 8. S85°54'15"E 177.34'
 9. S0°31'55"W 122.17'
 10. S84°56'00"E 85.27'
 11. N0°31'55"E 218.26'
 12. S89°28'05"E 5'
 13. S0°31'55"W 70'
 14. N89°28'05"W 90'
 15. S0°31'55"W 93.84'
 16. N89°36'32"W 119.37'
 17. N2°42'58"W 174.98'
 18. N87°17'02"W 125'
 19. N2°43'46"E 199.86'
 20. S87°17'02"E 125'
 21. N89°39'02"E 119.62'
 22. S0°31'55"W 39.58'
 23. S89°39'02"E 75'
 24. S0°31'55"W 80'
 25. N89°39'02"W 75'
 - 25A. S0°31'55"W 6.41'
 26. L=136.49'
 27. S5°17'01"W 99.79'
 28. N84°58'57"W 142.86'
 29. N88°36'55"E 152.13'
 30. S83°12'08"E 80.26'
 31. S68°56'25"E 105.96'
 32. S15°52'30"E 156.75'
 33. N85°00'41"E 144.2'
 34. N49°13'09"E 223.67'
 35. N74°26'52"E 91'
 36. N38°21'03"E 90.55'
 37. N0°04'39"E 88.89'
 38. S22°34'56"W 25.16'
 39. N60°56'52"W 76.29'
 40. N12°27'47"E 26.09'



270517
& INDEX
Roseburg

Lower Right:
123°18'8"W 43°12'43"N
4174380E 575668N ft