

THIS MAP WAS PREPARED FOR ASSESSMENT PURPOSE ONLY.

SW1/4 SE1/4 SEC.16 T.27S. R.5W. W.M. DOUGLAS COUNTY

REVISED ON 3-19-19

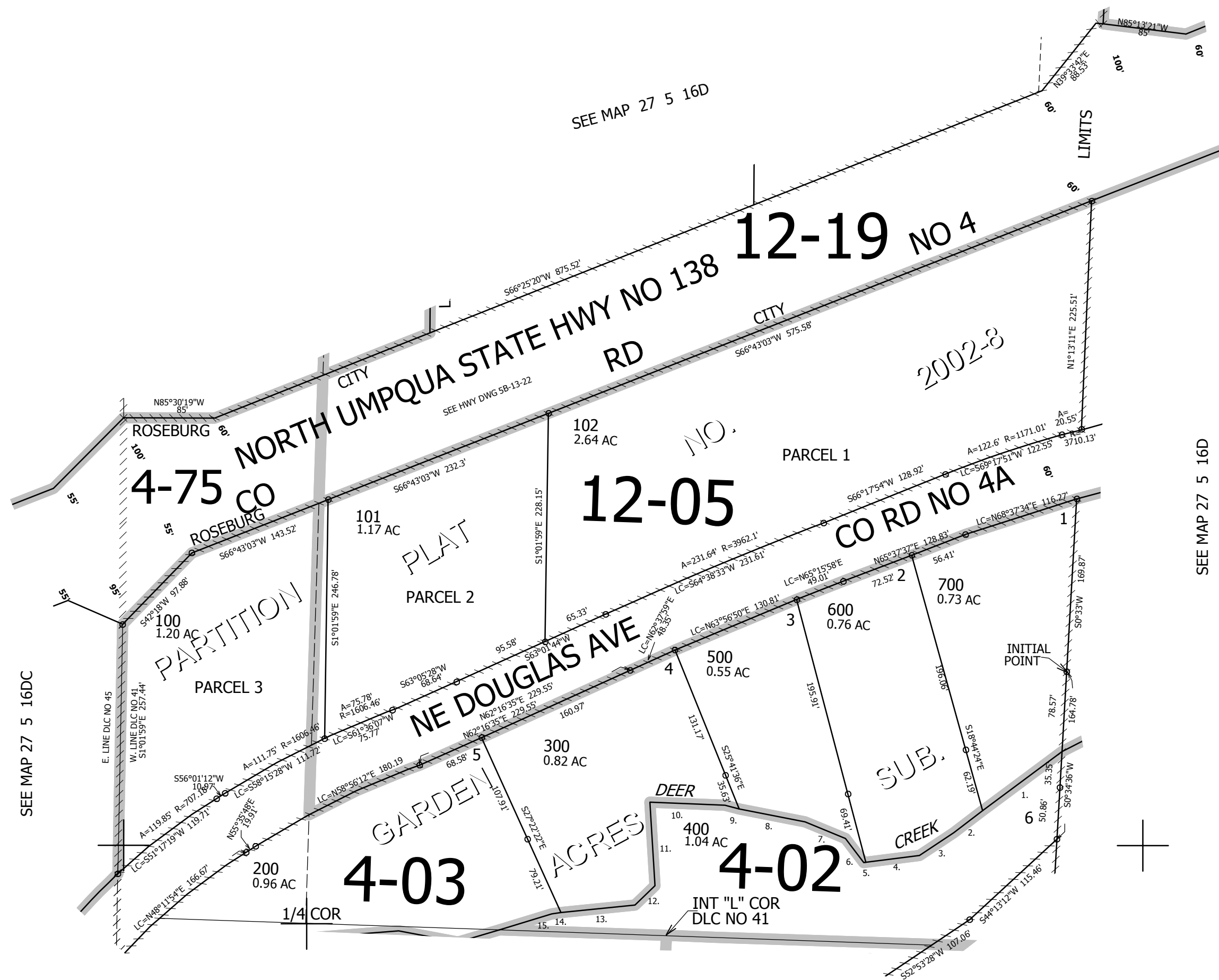
27 5 16DC ROSEBURG

1" = 100'

1/16 COR

1/16 COR

CANCELLED NO'S



- DEER CREEK
1. S50°14'37"W 96.61'
  2. S50°14'37"W 36.4'
  3. S53°05'44"W 40.27'
  4. S79°00'48"W 51.98'
  5. S79°00'48"W 1.43'
  6. N43°59'58"W 30.9'
  7. N72°13'39"W 42.78'
  8. N82°13'55"W 64.51'
  9. N82°13'55"W 15.59'
  10. S88°55'35"W 73.65'
  11. S6°23'07"E 81.91'
  12. S42°44'28"W 27.56'
  13. S80°37'31"W 74.02'
  14. S80°37'31"W 7.15'

SEE MAP 27 5 16DC

SEE MAP 27 5 16D

SEE MAP 27 5 21AB

SEE MAP 27 5 21

4,177,000

576,500

1/16 COR

27 5 16DC ROSEBURG