

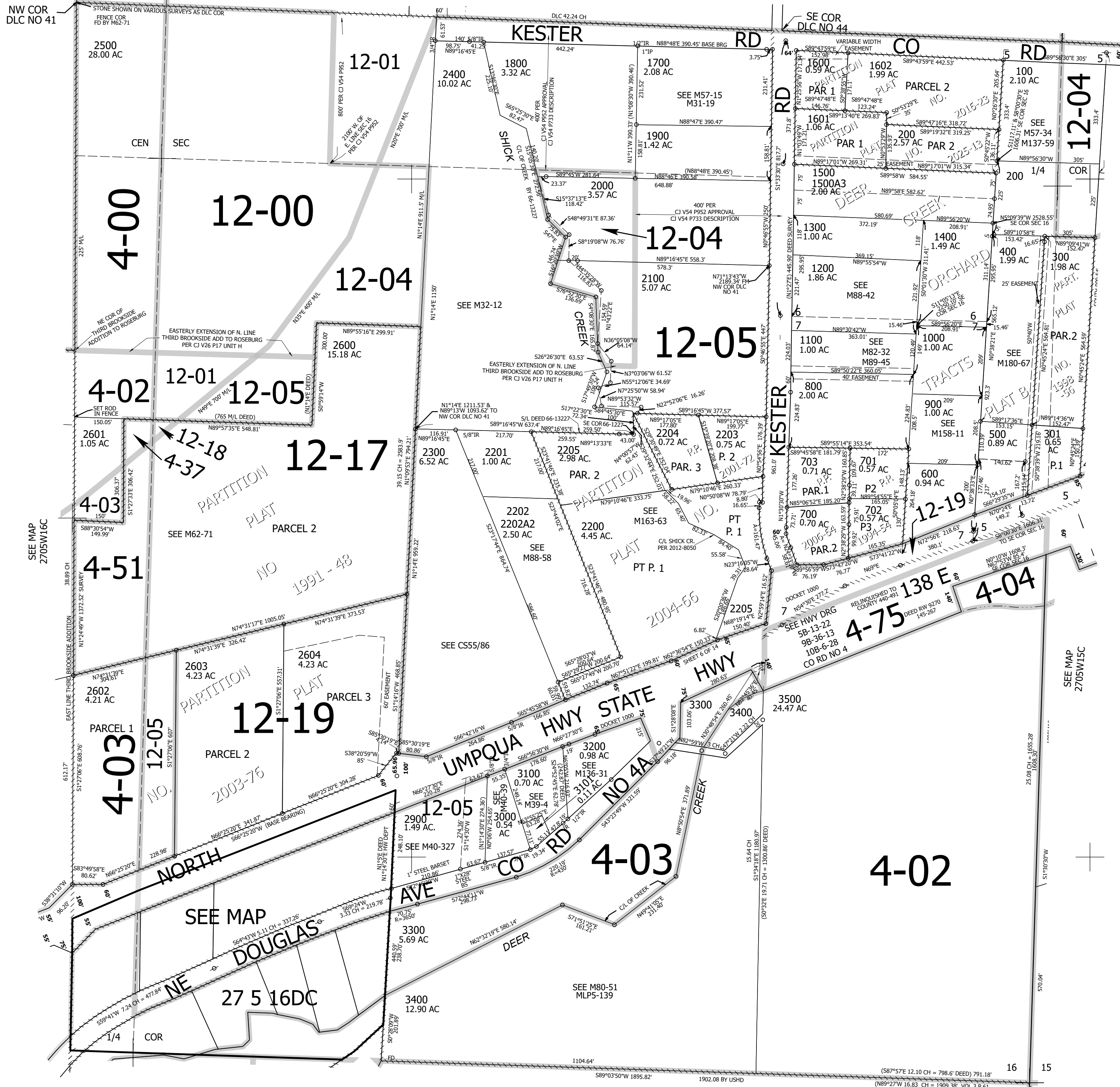
THIS MAP WAS PREPARED FOR ASSESSMENT PURPOSE ONLY.

Upper Left:  
123°17'55"W 43°13'23"N  
4175476E 579724N ft

SE1/4 SEC.16 T.27S. R.05W. W.M.  
DOUGLAS COUNTY  
SEE MAP 2705W16  
1" = 200'

Date Exported 2026-03-25

270516D  
& INDEX  
Roseburg  
CANCELLED NOS:  
2700 2800 1100A1  
2206 2200A1 1500A1  
1200A1 1500A2 401  
2202A1 1603



SEE MAP 2705W21

Lower Right:  
123°17'11"W 43°12'49"N  
4179403E 576124N ft

270516D  
& INDEX  
Roseburg