

SW1/4 SEC.16 T.27S. R.5W. W.M.
DOUGLAS COUNTY

REVISED ON
5-6-19

27 5 16C
ROSEBURG

THIS MAP WAS PREPARED FOR
ASSESSMENT PURPOSE ONLY.

1/4
COR

1" = 200'

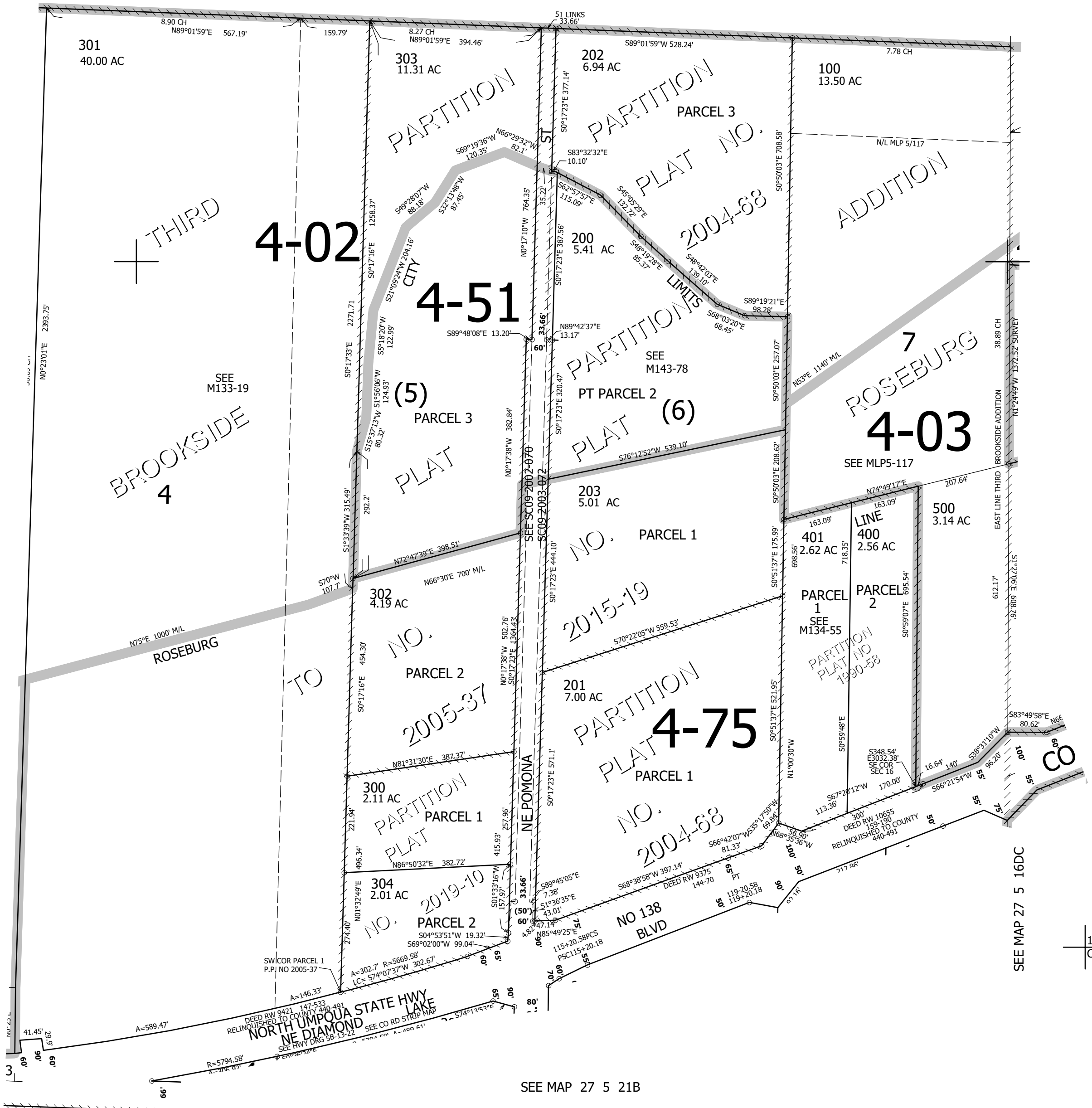
CEN
SEC

SEE MAP 27 5 16

CANCELLED NO'S

SEE MAP 27 5 17D

SEE MAP 27 5 16D



17 16
20 21

SEE MAP 27 5 16DC

1/4
COR

SEE MAP 27 5 21B

4,176,000

576,000
27 5 16C
ROSEBURG