

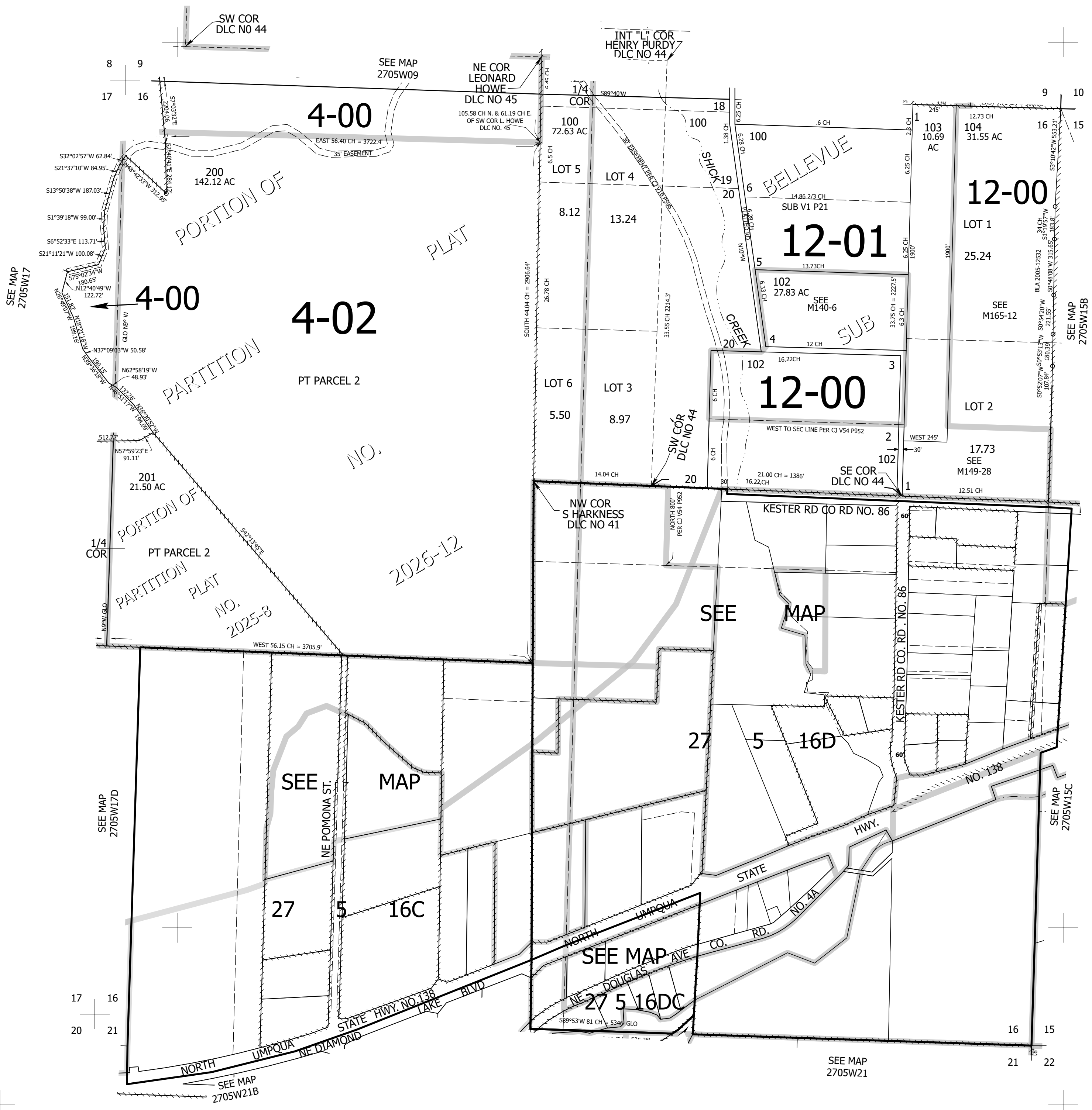
THIS MAP WAS PREPARED FOR ASSESSMENT PURPOSE ONLY.

Upper Left:
123°18'41"W 43°13'51"N
4172220E 582581N ft

SEC.16 T.27S. R.05W. W.M.
DOUGLAS COUNTY
1" = 400'

Date Exported 2026-04-01

CANCELLED NOS:
101 105 202



Lower Right:
123°16'51"W 43°12'45"N
4180070E 575626N ft