

THIS MAP WAS PREPARED FOR ASSESSMENT PURPOSE ONLY.

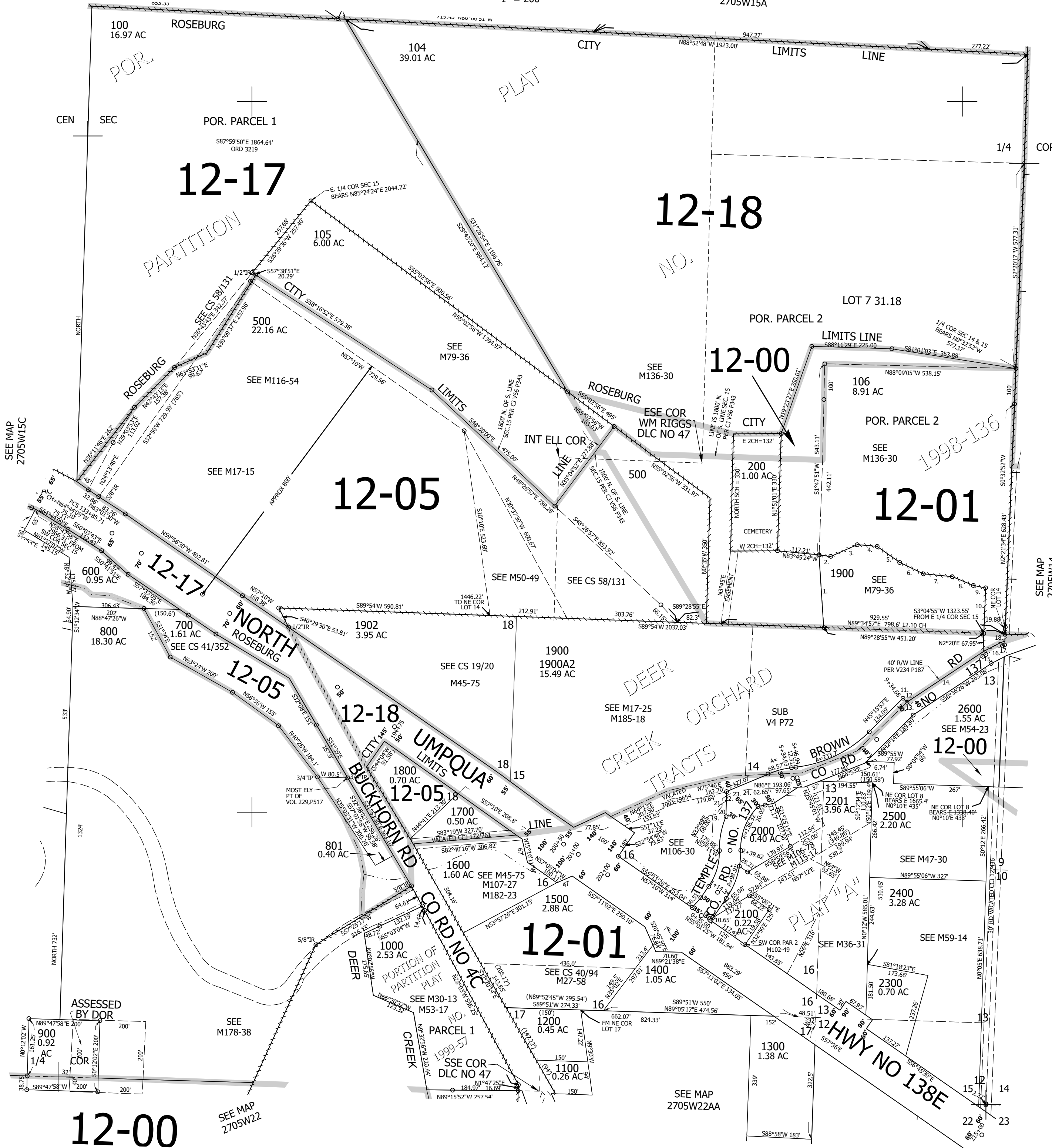
Upper Left:
123°16'43"W 43°13'23"N
4180801E 579457N ft

SE1/4 SEC.15 T.27S. R.05W. W.M.
DOUGLAS COUNTY
1" = 200'

Date Exported 2026-02-12

- PARCEL 1900
- 1. N3°43'27"W 198.93'
- 2. S82°38'42"E 32.84'
- 3. N66°14'03"E 82.81'
- 4. S85°08'48"E 55.64'
- 5. S54°44'24"W 78.24'
- 6. S64°00'55"E 73.95'
- 7. S84°24'06"E 81.69'
- 8. S67°31'58"E 64.2'
- 9. S78°29'00"E 35.3'
- 10. S2°20'00"W 124.35'
- 11. S44°45'09"E 15.55'
- 12. S44°45'09"E 9.84'
- 13. S44°45'09"E 4.61'
- 14. N56°36'26"E 247.65'
- 15. N56°36'26"E 9.73'
- 16. N62°56'40"E 52.51'
- 17. N70°40'54"E 6.87'
- 18. N2°20'37"E 30.44'
- 19. N77°49'E 21.21'
- 20. N32°49'E 14.68'
- 21. R=98.24' A=13.95'
- 22. N0°27'47"W 21.01'
- 23. R=113.24' A=76.82'

- CANCELLED NOS:
- 1900A1 501 2003
- 103 301 1901
- 1001 1501 2400A1
- 101 102 300
- 302 400 107
- 901 902 802
- 2002 2004 2005
- 2200 2001



12-00

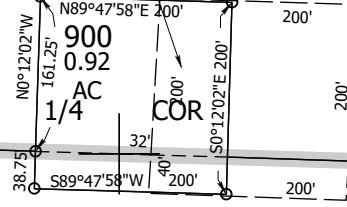
SEE MAP 2705W22

SEE MAP 2705W22AA

SEE MAP 2705W15C

SEE MAP 2705W14

ASSESSED BY DOR



270515D
& INDEX
Roseburg

Lower Right:
123°15'49"W 43°12'48"N
4184727E 575857N ft