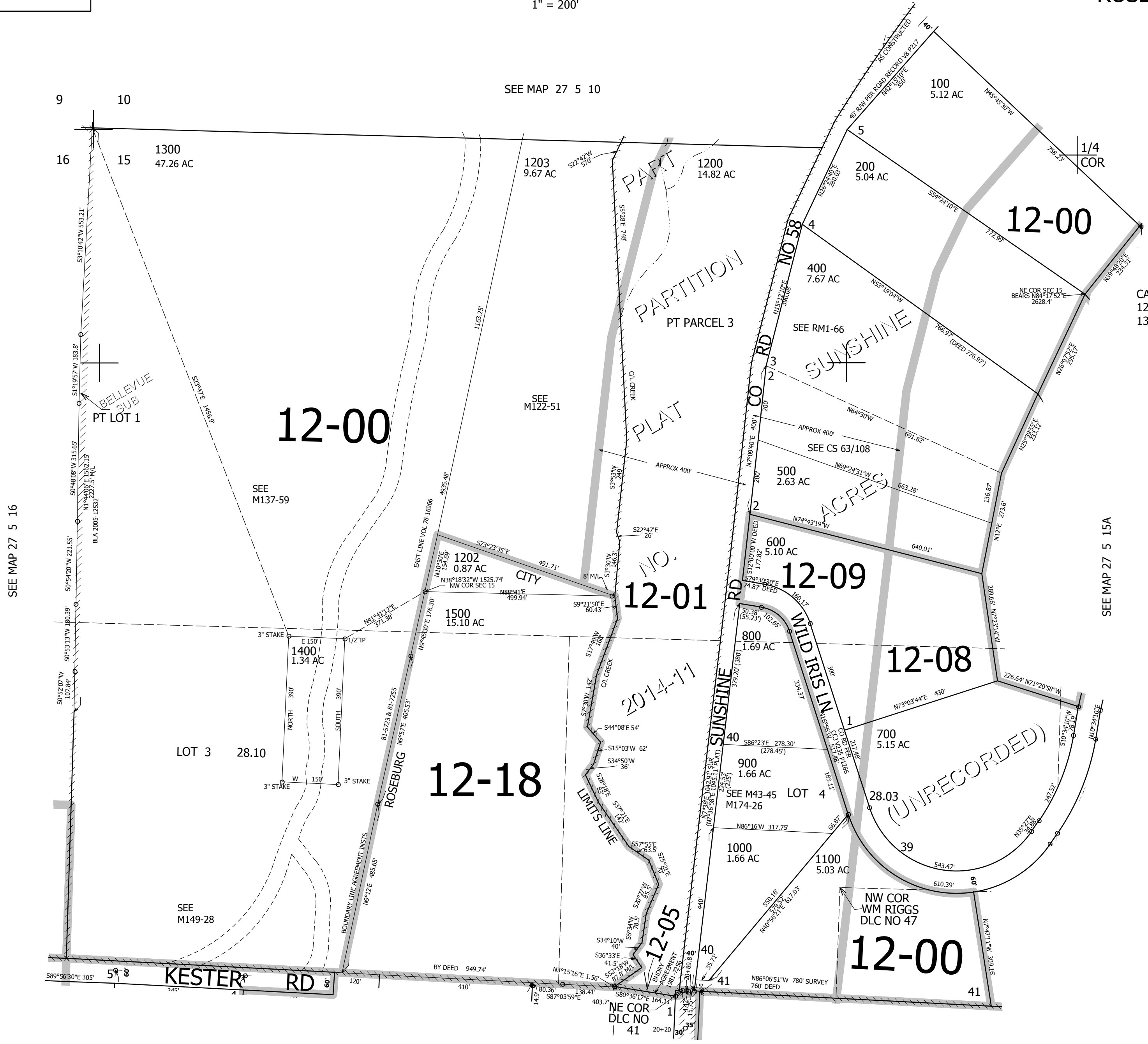


THIS MAP WAS PREPARED FOR ASSESSMENT PURPOSE ONLY.

NW1/4 SEC.15 T.27S. R.5W. W.M. DOUGLAS COUNTY
1" = 200'

REVISED ON 10-9-18

27 5 15B ROSEBURG



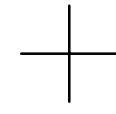
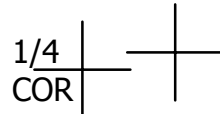
SEE MAP 27 5 10

SEE MAP 27 5 16

SEE MAP 27 5 15A

SEE MAP 27 5 15C

CANCELLED NO'S 1201 1300A1 300 1300A2



579,000

4,181,000

27 5 15B ROSEBURG