

THIS MAP WAS PREPARED FOR ASSESSMENT PURPOSE ONLY.

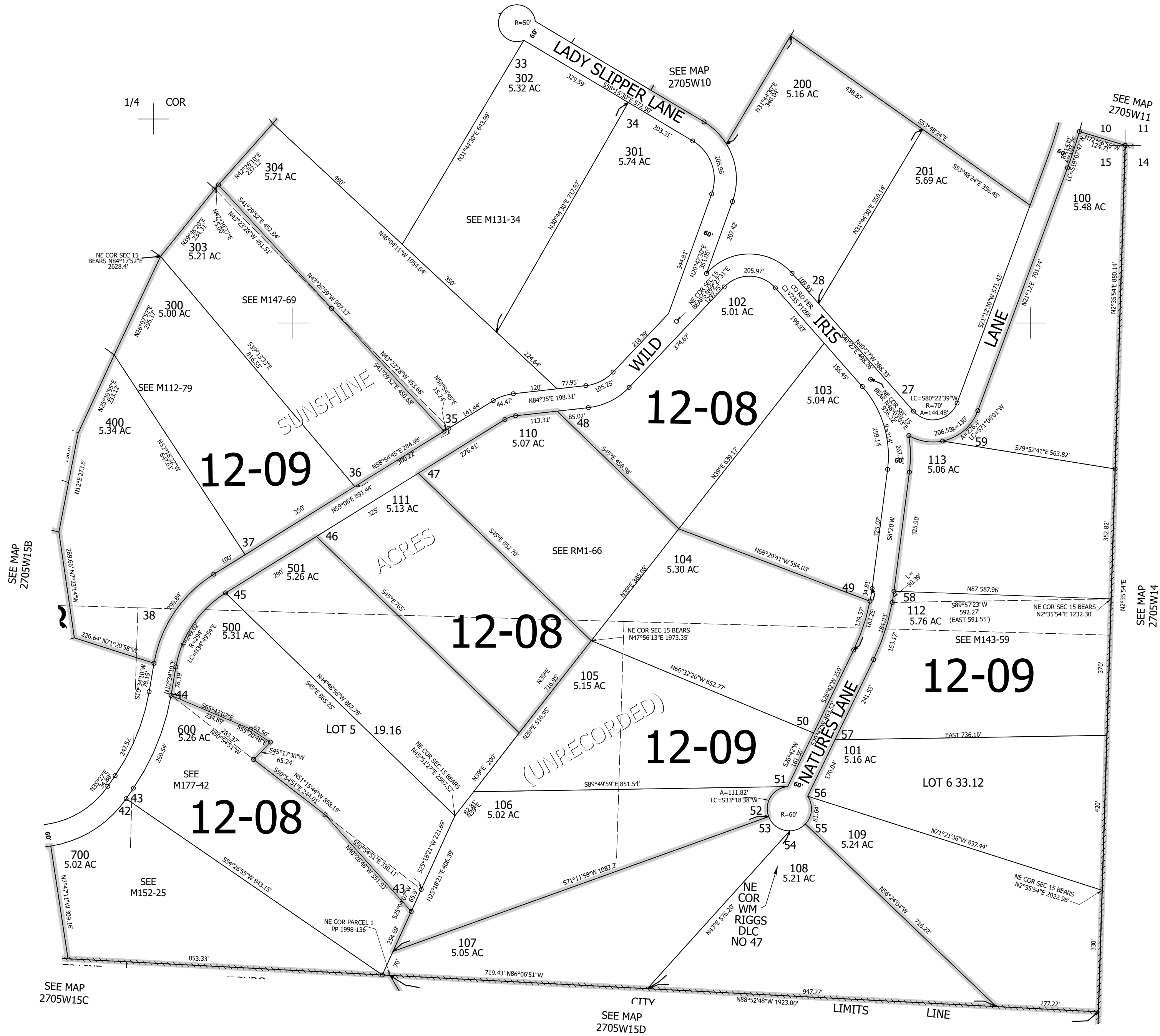
Upper Left:
123°16'44"W 43°13'50"N
4180840E 582285N ft

NE1/4 SEC.15 T.27S. R.05W. W.M.
DOUGLAS COUNTY
1" = 200'

Date Exported 2026-03-24

270515A

CANCELLED NOS:
114 800 601
502



CEN SEC

1/4 COR

270515A

Lower Right:
123°15'49"W 43°13'16"N
4184766E 578685N ft