

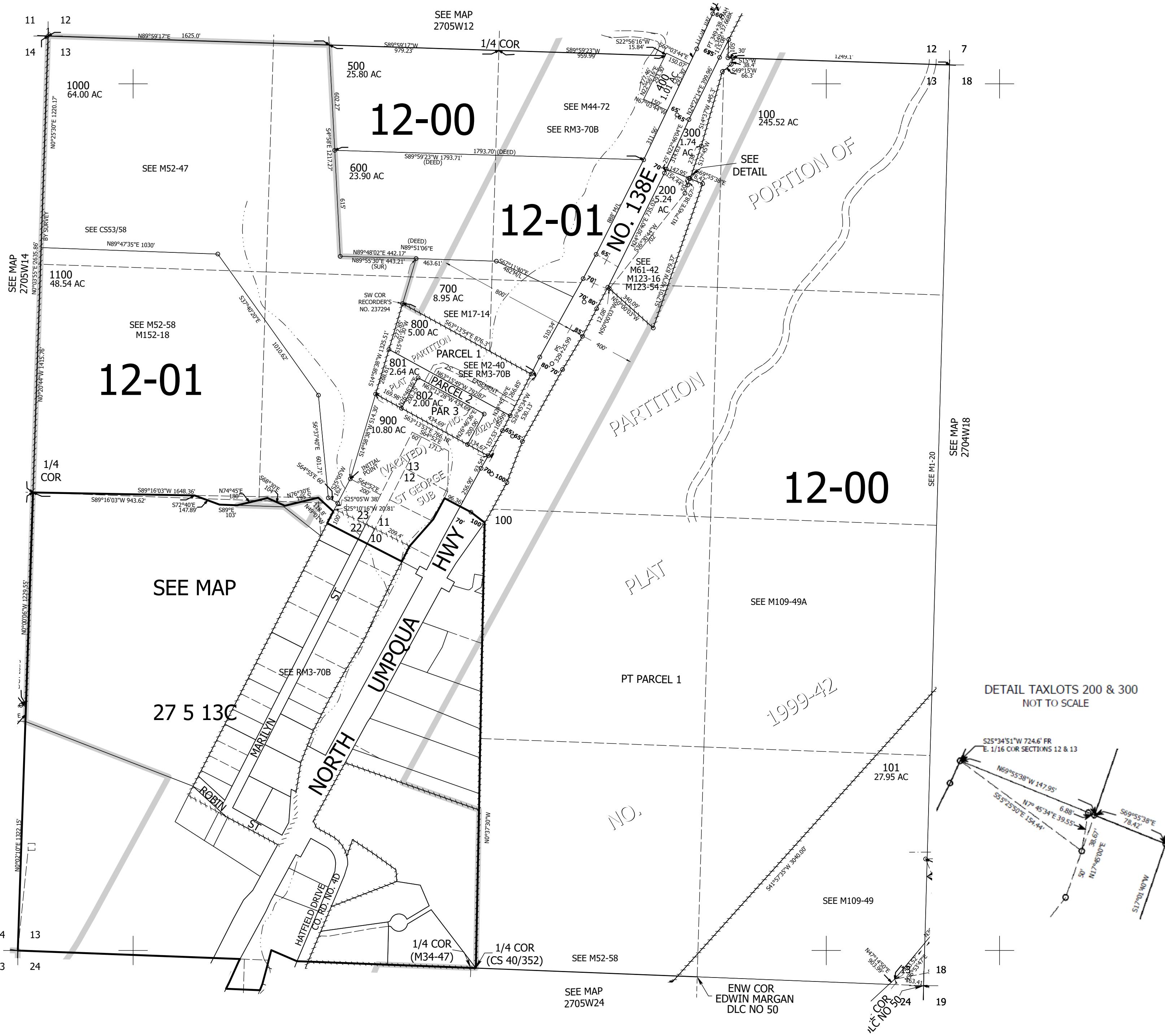
THIS MAP WAS PREPARED FOR ASSESSMENT PURPOSE ONLY.

Upper Left:
123°15'6"W 43°13'50"N
4188093E 581972N ft

SEC.13 T.27S. R.05W. W.M.
DOUGLAS COUNTY
1" = 400'

Date Exported 2026-04-02

CANCELLED NOS:
301 102



DETAIL

Lower Right:
123°13'17"W 43°12'44"N
4195943E 575017N ft