

THIS MAP WAS PREPARED FOR ASSESSMENT PURPOSE ONLY.

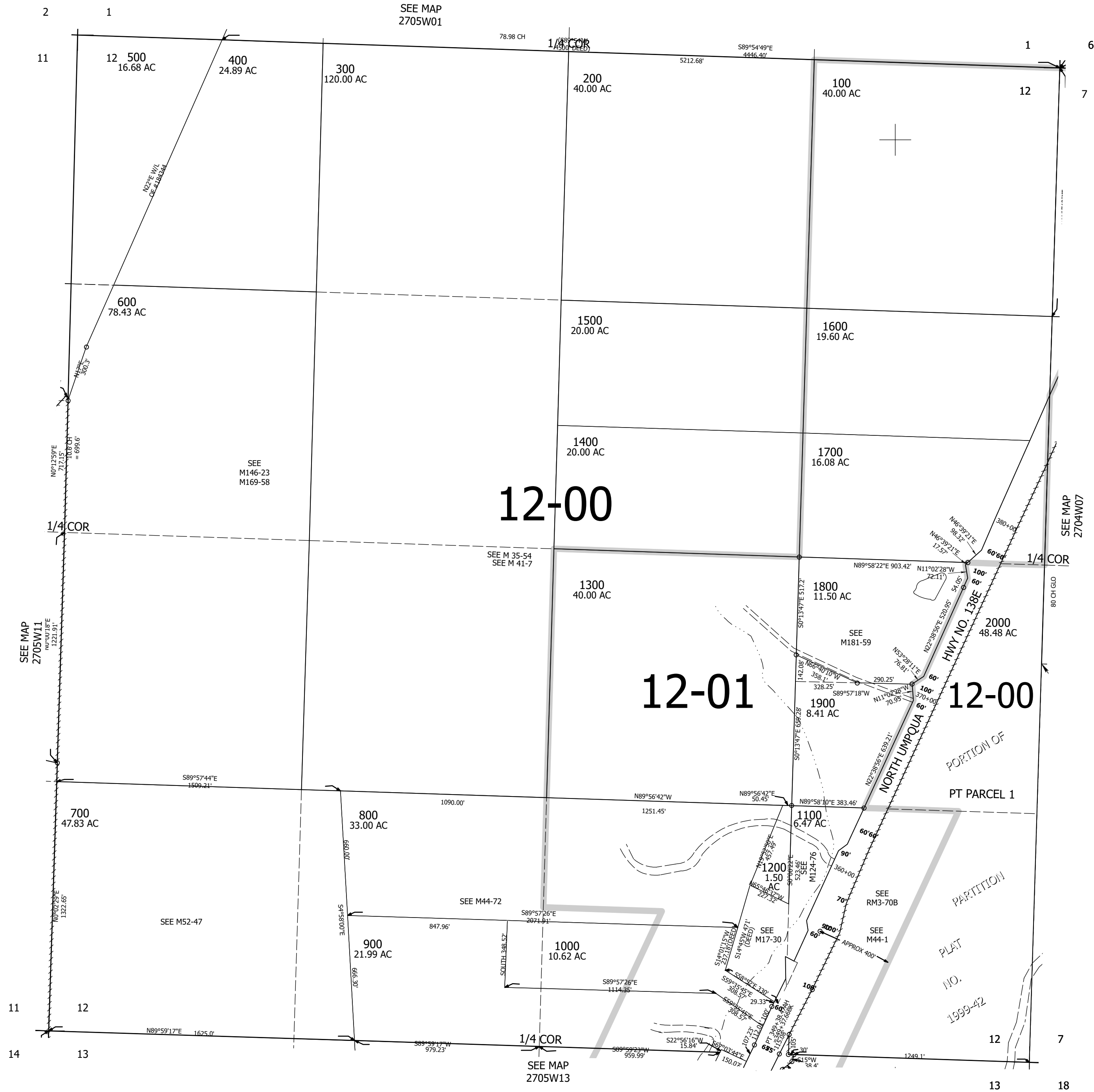
Upper Left:
123°15'6"W 43°14'42"N
4188271E 587307N ft

SEC.12 T.27S. R.05W. W.M.
DOUGLAS COUNTY
1" = 400'

Date Exported: 4/17/2023 1:17 PM

270512
&

CANCELLED NOS:
200M1 800M1 900M1
1000M1 1800M1 1900M1
1801



Lower Right:
123°13'17"W 43°13'36"N
4196121E 580351N ft

270512
&