

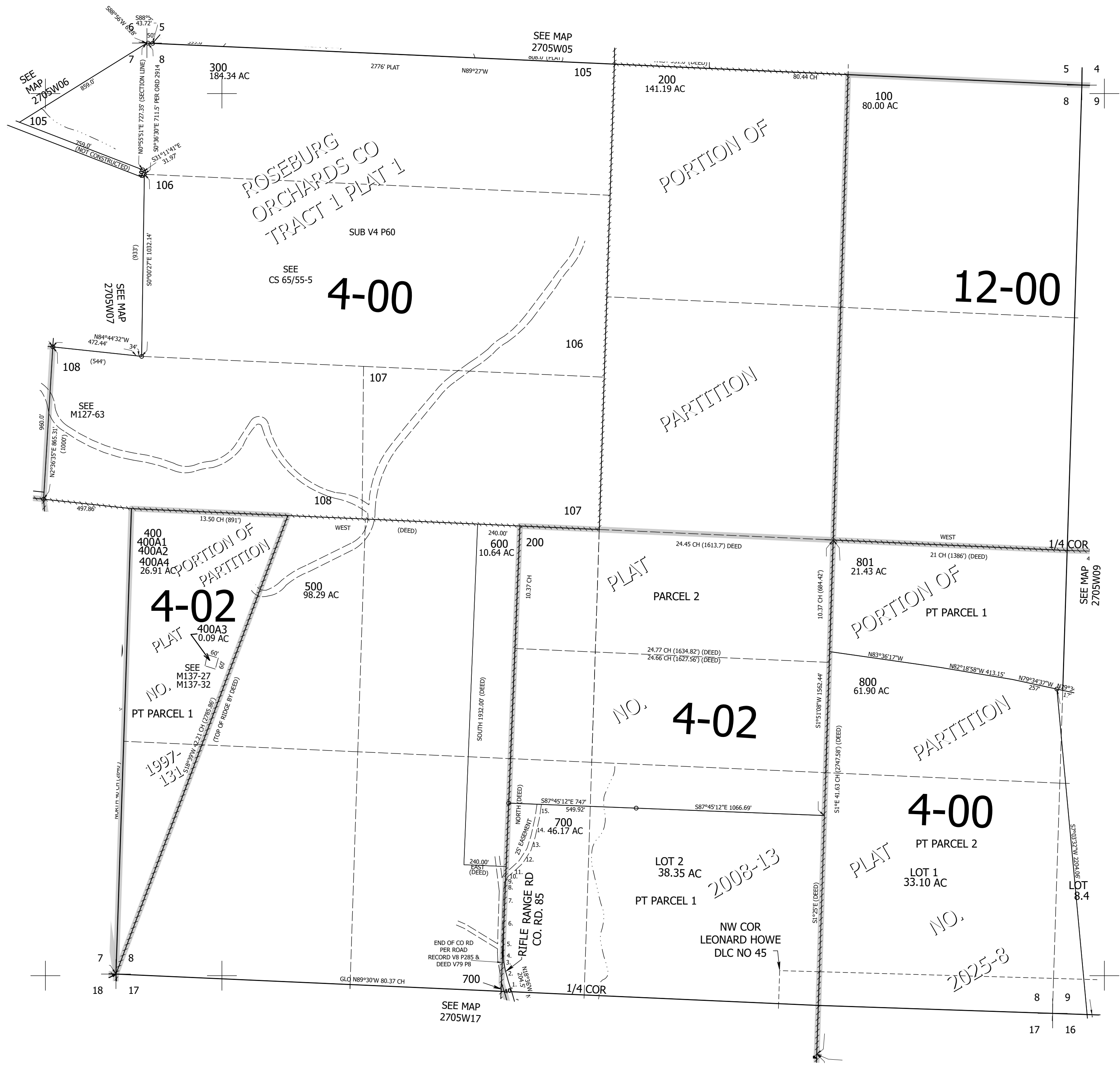
THIS MAP WAS PREPARED FOR ASSESSMENT PURPOSE ONLY.

Upper Left:
123°19'54"W 43°14'43"N
4166948E 588019N ft

SEC.08 T.27S. R.05W. W.M.
DOUGLAS COUNTY
1" = 400'

CANCELLED NOS:
500M1 600M1 201
802 803

- PP 2008-13
- C/L 40' CO. RD. NO. 85 R/W & C/L 25' EASEMENT
- 1. N17°34'50"W 77.14'
- 2. N15°31'43"W 62.86'
- 3. N10°38'27"W 57.68'
- 4. N2°08'40"W 51.89'
- 5. N0°54'07"E 109.55'
- 6. N1°53'11"E 134.96'
- 7. N2°00'30"E 101.99'
- 8. N6°09'34"E 57.64'
- 9. N31°51'59"E 39.04'
- 10. N49°24'45"E 45.08'
- 11. N47°04'00"E 66.59'
- 12. N32°49'31"E 84.24'
- 13. N17°47'59"E 78.33'
- 14. N12°39'42"E 108.74'
- 15. N8°00'51"E 76.54'



Lower Right:
123°18'5"W 43°13'36"N
4174797E 581064N ft