

THIS MAP WAS PREPARED FOR ASSESSMENT PURPOSE ONLY.

Upper Left:  
123°20'10"W 43°13'58"N  
4165653E 583543N ft

SW1/4 SE1/4 SEC.07 T.27S. R.05W. W.M.  
DOUGLAS COUNTY  
1" = 100'

Date Exported 2025-08-25

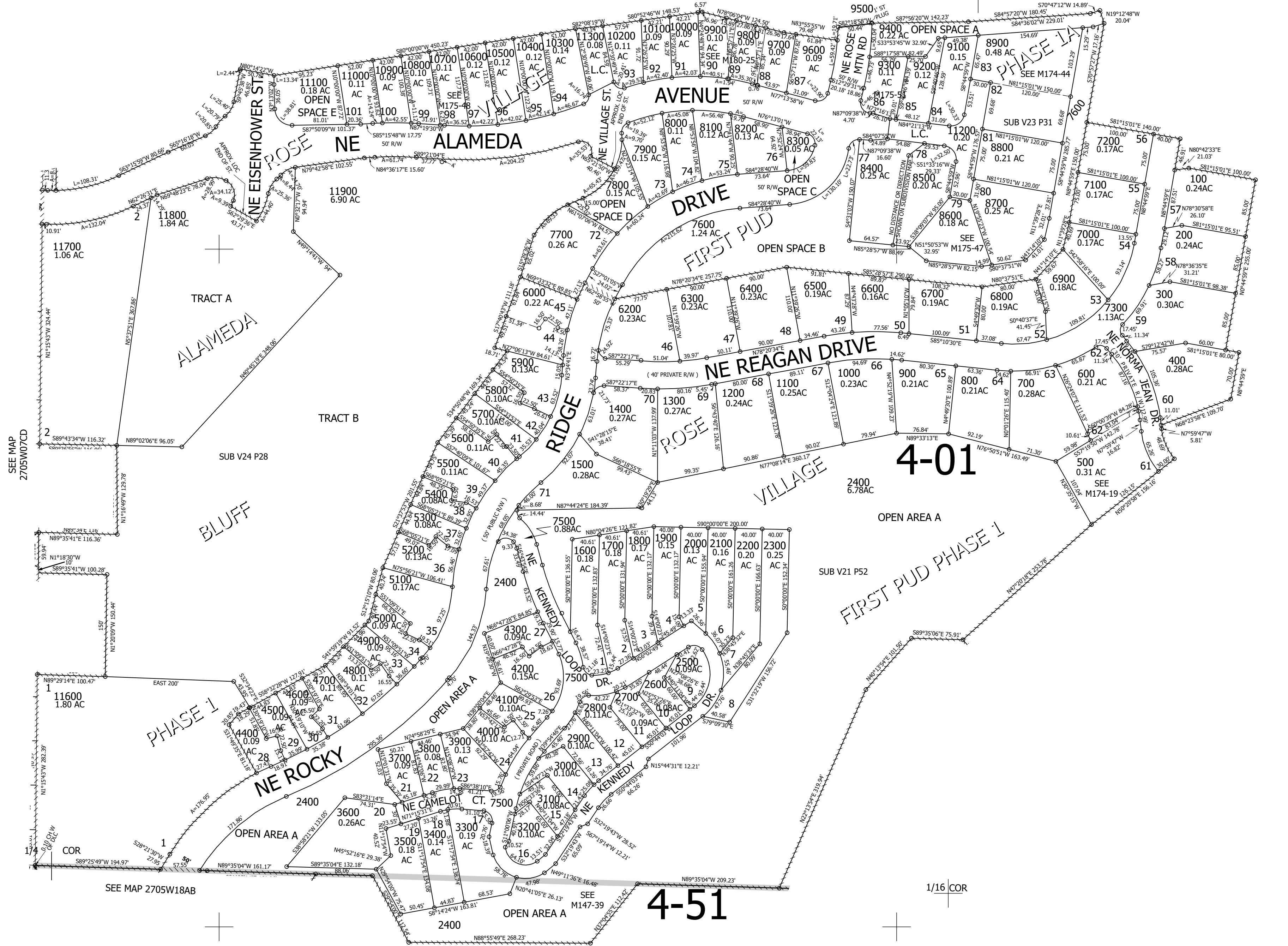
270507DC  
Roseburg

CANCELLED NOS:  
7400 601 9801  
9901 9802 9701  
9000 6100 11400  
11500

1/16 COR

1/16 COR

SEE MAP 2705W07



4-01

4-51

SEE MAP 2705W18AB

SEE MAP 2705W18

270507DC  
Roseburg

Lower Right:  
123°19'42"W 43°13'41"N  
4167628E 581805N ft