

THIS MAP WAS PREPARED FOR ASSESSMENT PURPOSE ONLY.

Upper Left:
123°20'30"W 43°13'57"N
4164136E 583483N ft

SE1/4 SW1/4 SEC.07 T.27S. R.05W. W.M.
DOUGLAS COUNTY
1" = 100'

Date Exported 2026-02-11

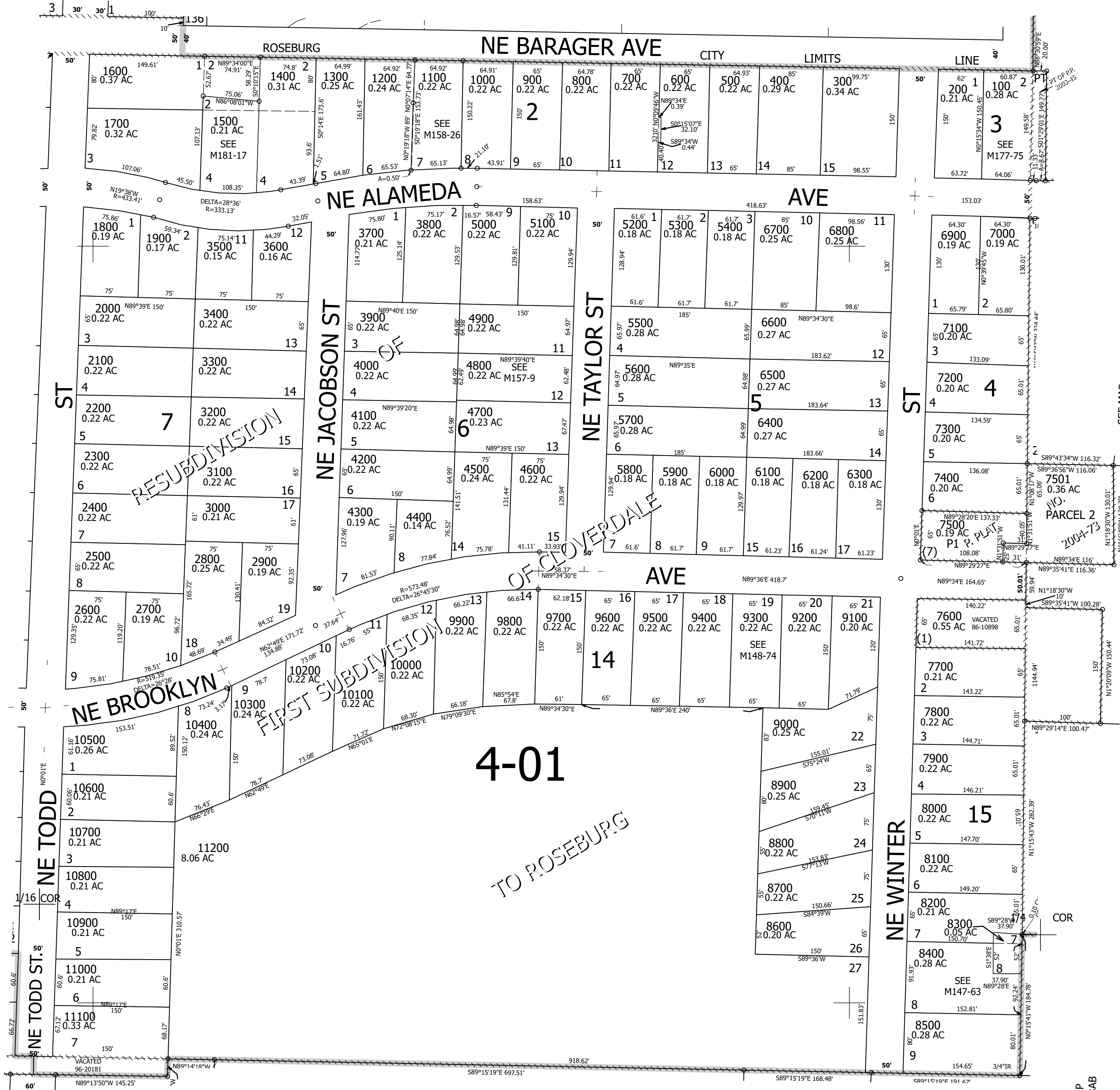
270507CD
Roseburg

CANCELLED NOS:
1201 1501

SEE MAP
2705W07CB

SEE MAP
2705W07

1/16" COR



SEE MAP
2705W07CC

SEE MAP
2705W07DC

SEE MAP
2705W18BB

SEE MAP
2705W18BA

SEE MAP
2705W18AB

270507CD
Roseburg

Lower Right:
123°20'3"W 43°13'40"N
4166108E 581744N ft