

THIS MAP WAS PREPARED FOR ASSESSMENT PURPOSE ONLY.

NE1/4 NW1/4 SEC.7 T.27S. R.5W. W.M.
DOUGLAS COUNTY

REVISED ON
3-2-17

27 5 7BA
ROSEBURG

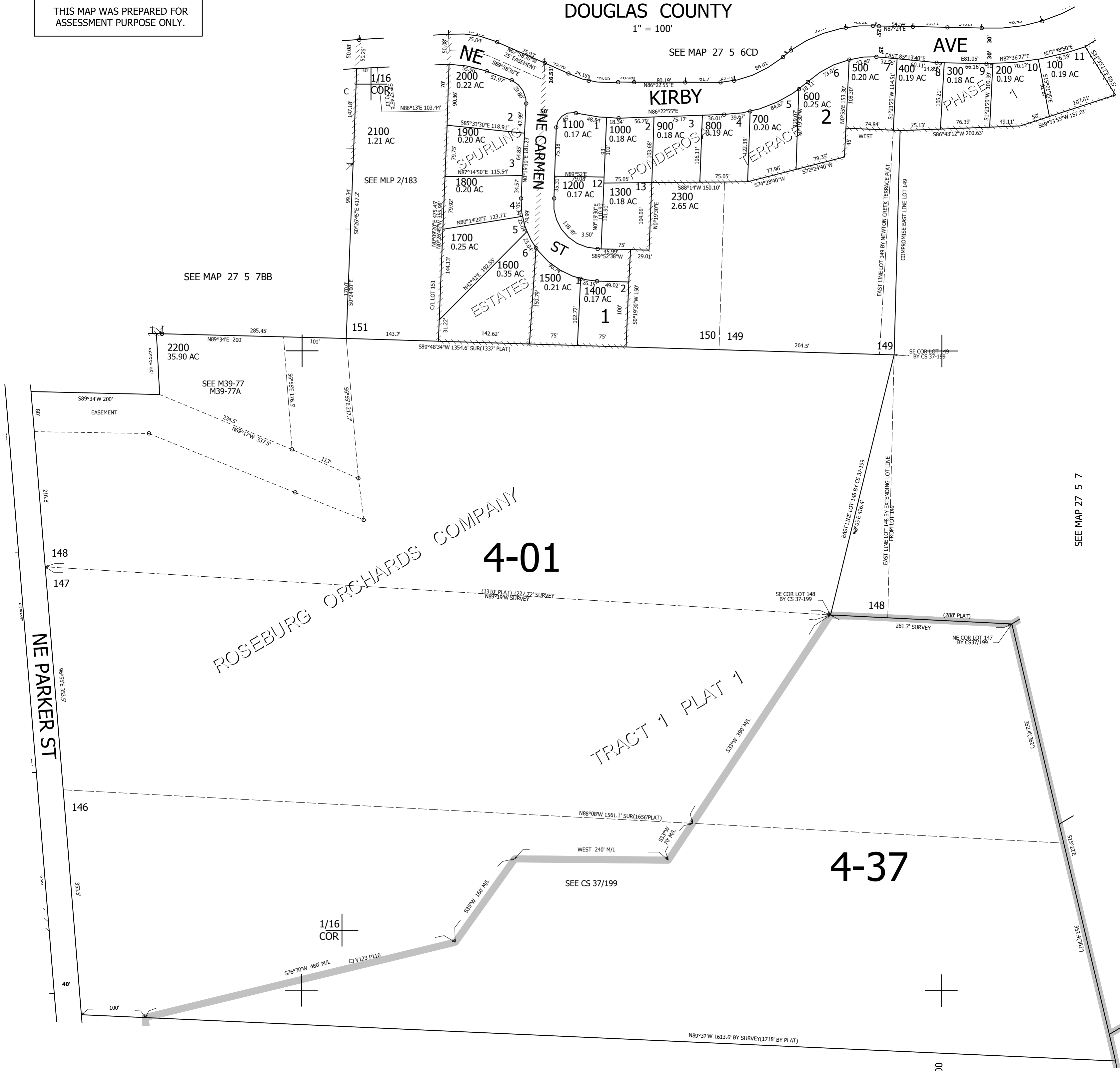
1" = 100'

SEE MAP 27 5 6CD

AVE

1/4
COR

CANCELLED NO'S



SEE MAP 27 5 7

4-01

TRACT 1 PLAT 1

4-37

SEE CS 37/199

1/16
COR

586,000

27 5 7BA
ROSEBURG

SEE MAP 27 5 7

4,165,500