

THIS MAP WAS PREPARED FOR ASSESSMENT PURPOSE ONLY.

SW1/4 SE1/4 SEC.6 T.27S. R.5W. W.M. DOUGLAS COUNTY

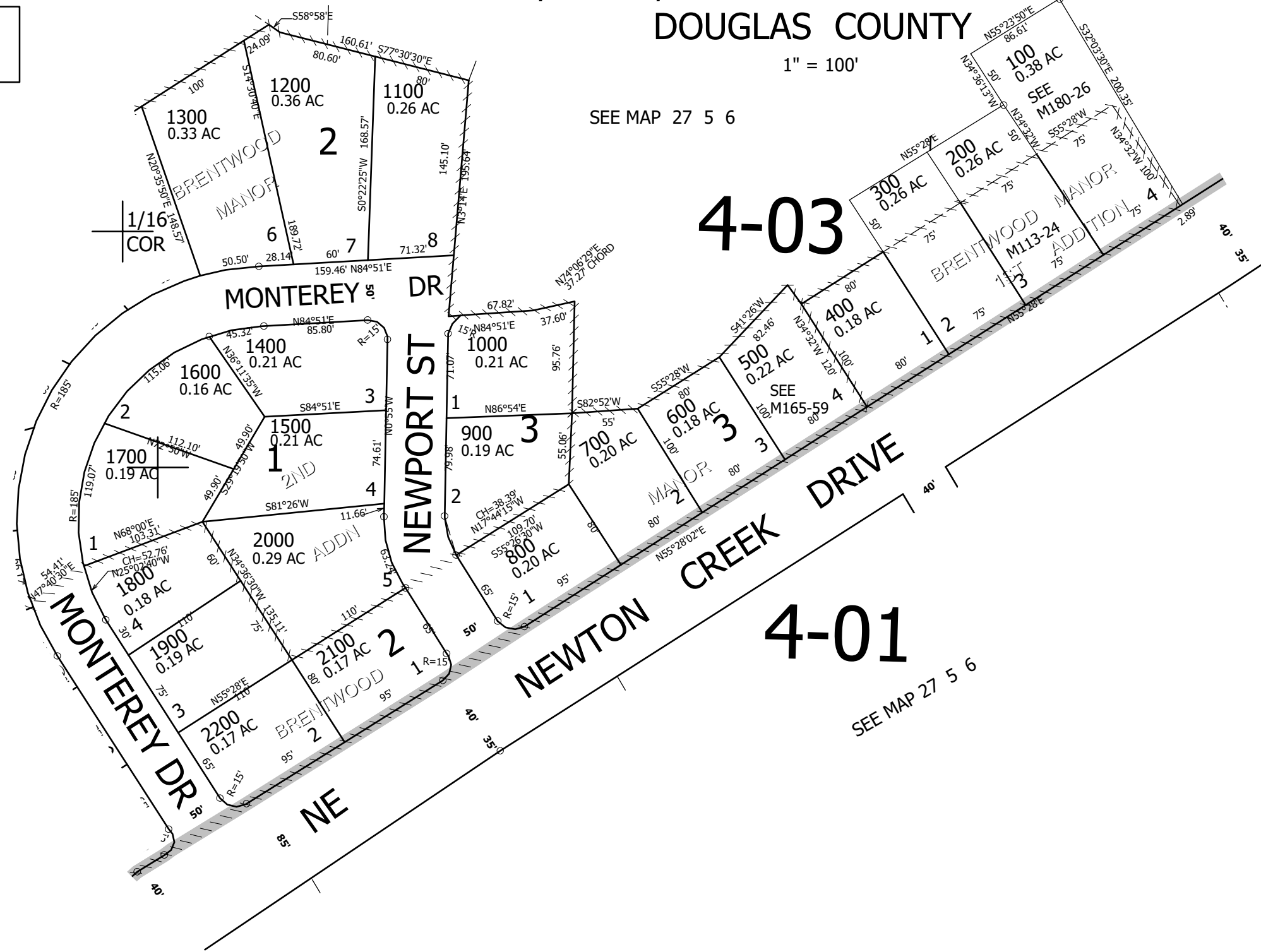
REVISED ON 11-18-21

27 5 6DC ROSEBURG

1" = 100'

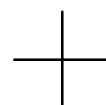
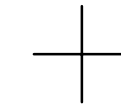
SEE MAP 27 5 6

SEE MAP 27 5 6CD

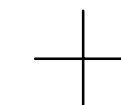


1/16 COR

CANCELLED NO'S 2300 2400



1/4 COR



587,500

1/16 COR

4,167,000

27 5 6DC ROSEBURG