

THIS MAP WAS PREPARED FOR ASSESSMENT PURPOSE ONLY.

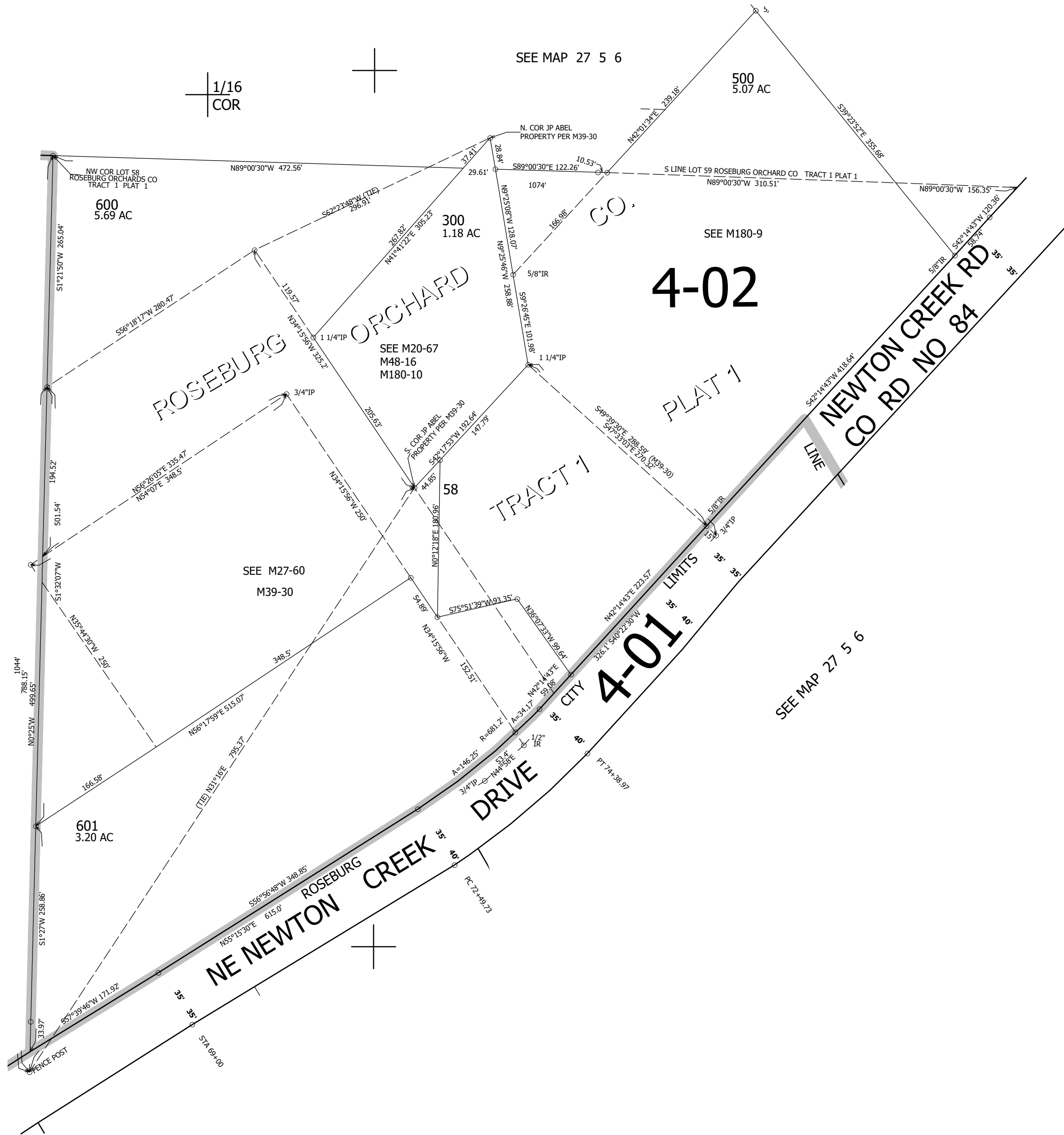
NE1/4 SE1/4 SEC.6 T.27S. R.5W. W.M.  
DOUGLAS COUNTY

REVISED ON  
11-9-21

27 5 6DA  
ROSEBURG

1" = 100'

SEE MAP 27 5 6



1/4  
COR

CANCELLED NO'S  
600A2 600A1 100  
200 400 501  
502 700

SEE MAP 27 5 6

589,000

1/16  
COR

1/16  
COR

4,168,500

27 5 6DA  
ROSEBURG