

THIS MAP WAS PREPARED FOR ASSESSMENT PURPOSE ONLY.

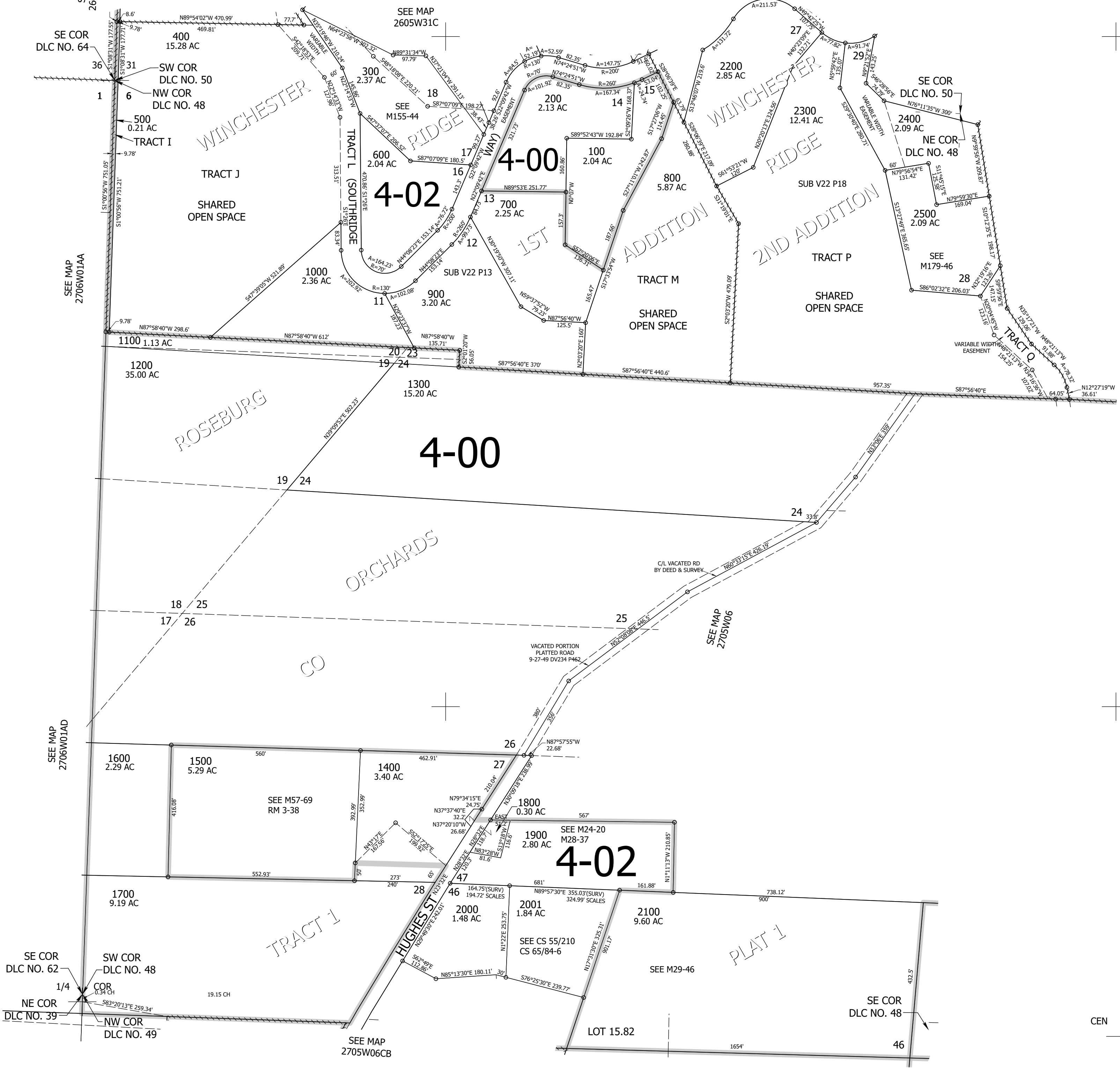
Upper Left:
123°20'58"W 43°15'33"N
4162380E 583364N ft

NW1/4 SEC.06 T.27S. R.05W. W.M.
DOUGLAS COUNTY
1" = 200'

Date Exported 2026-03-11

270506B

CANCELLED NOS:
301 302



1/4 COR

CEN SEC

270506B

Lower Right:
123°20'4"W 43°14'59"N
4166307E 589724N ft