

THIS MAP WAS PREPARED FOR ASSESSMENT PURPOSE ONLY.

Upper Left:  
123°21'5"W 43°15'34"N  
4161912E 593447N ft

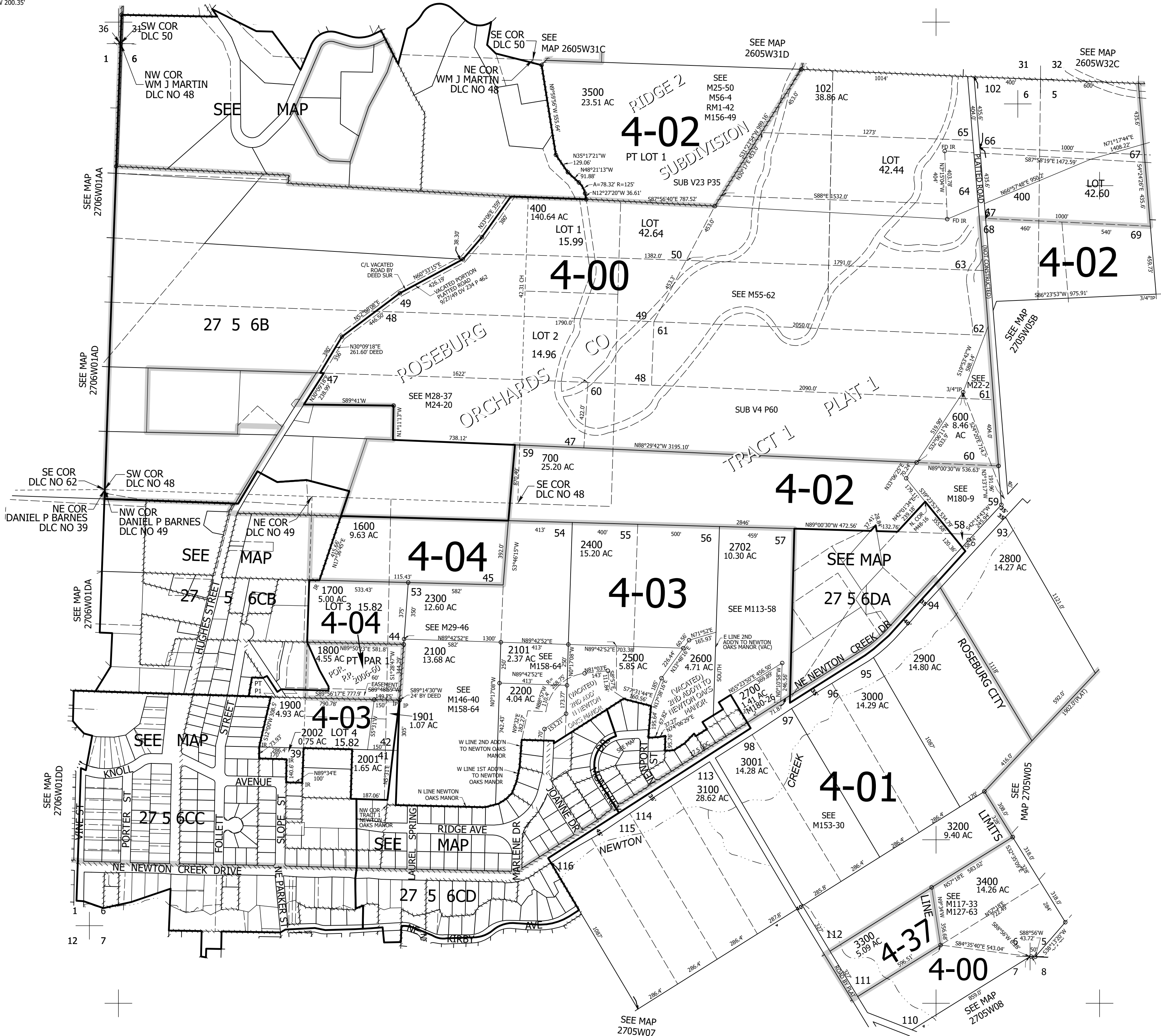
SEC.06 T.27S. R.05W. W.M.  
DOUGLAS COUNTY  
1" = 400'

Date Exported 2026-02-11

270506  
& INDEX  
Roseburg

PARCEL 2700  
1. S56°25'W 157.16'  
2. S55°42'W 82.29'  
3. N32°03'30"W 200.35'

CANCELLED NOS:  
2601 3301 2000  
2602 2701 2703  
1300M1 401 104  
100 103 200  
300 800 THRU 1500  
2102 2103 2201  
2202 101 2704  
500



SEE MAP  
2706W01DD

SEE MAP  
2706W01DA

SEE MAP  
2706W01A

SEE MAP  
2706W01AA

SEE MAP  
2706W01AD

SEE MAP  
2706W01A

SEE MAP  
2705W07

SEE MAP  
2705W08

SEE MAP  
2705W05B

SEE MAP  
2605W32C

SEE MAP  
2605W31D

SEE MAP  
2605W31C

270506  
& INDEX  
Roseburg

Lower Right:  
123°19'16"W 43°14'28"N  
4169762E 586492N ft