

THIS MAP WAS PREPARED FOR ASSESSMENT PURPOSE ONLY.

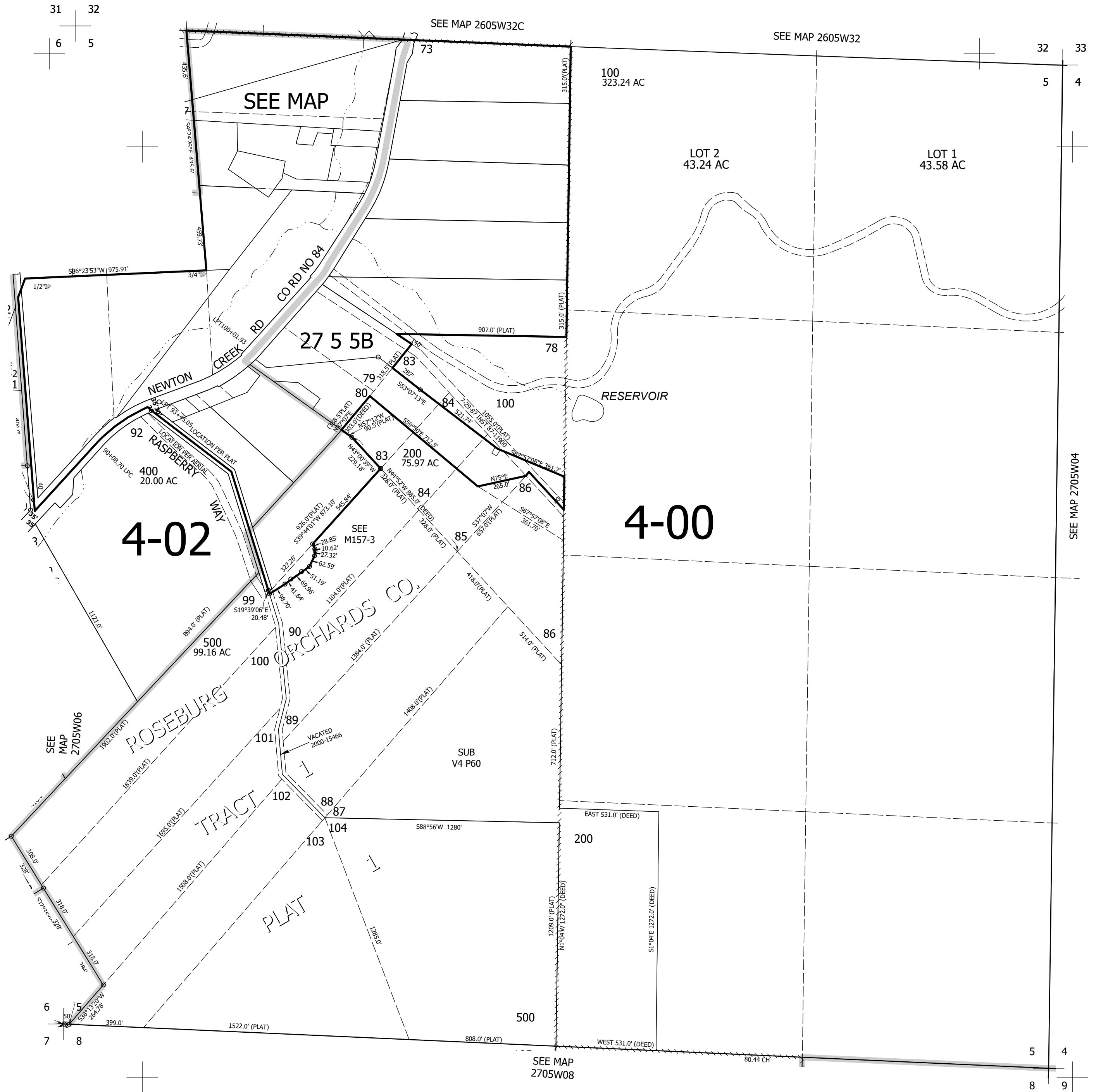
Upper Left:
123°19'53"W 43°15'35"N
4167224E 593313N ft

SEC.05 T.27S. R.05W. W.M.
DOUGLAS COUNTY
1" = 400'

Date Exported 2026-01-20

270505
& INDEX

CANCELLED NOS:
201 101-108 300
202



270505
& INDEX

Lower Right:
123°18'4"W 43°14'29"N
4175073E 586358N ft